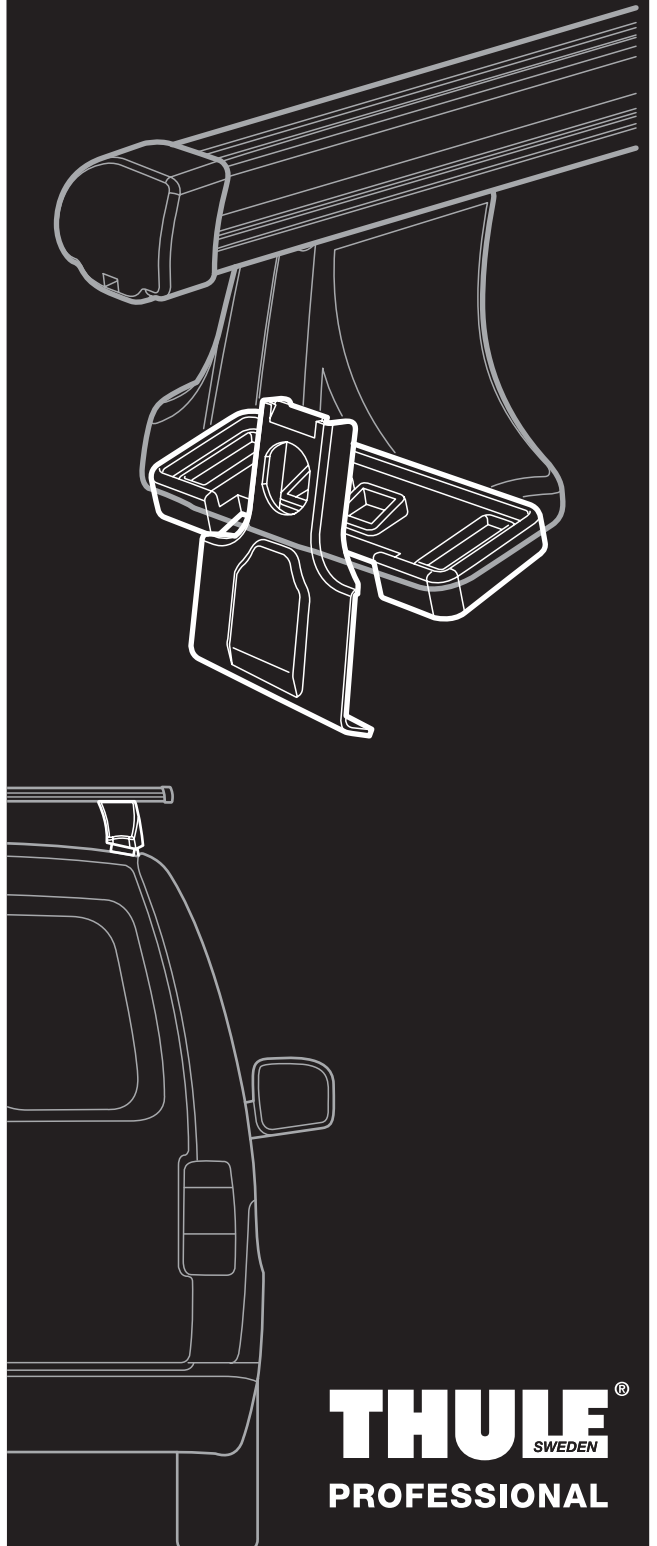


Load Carrier Kit 1475

121475



- HYUNDAI H-1, 5-dr Van, 08 – (With dual sliding doors)*
- HYUNDAI iLoad, 5-dr Van, 08 – (With dual sliding doors), (Asia)*
- HYUNDAI iMax, 5-dr Bus, 08 – (With dual sliding doors), (Asia)*
- HYUNDAI Starex, 5-dr Van, 08 – (With dual sliding doors)*

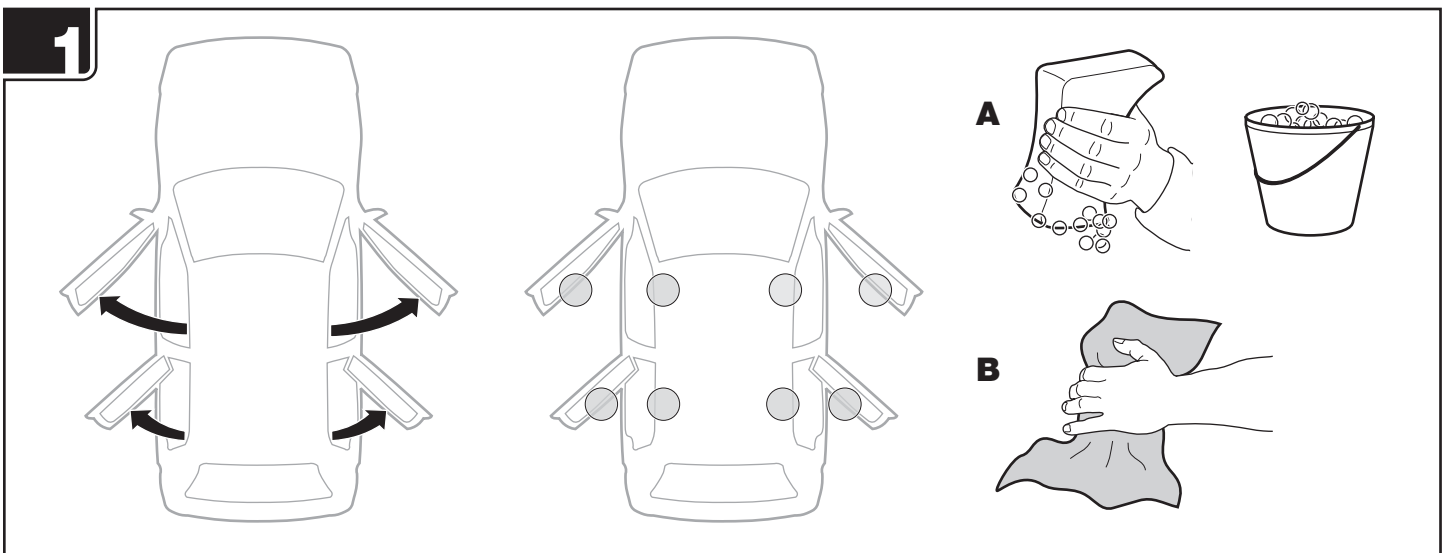
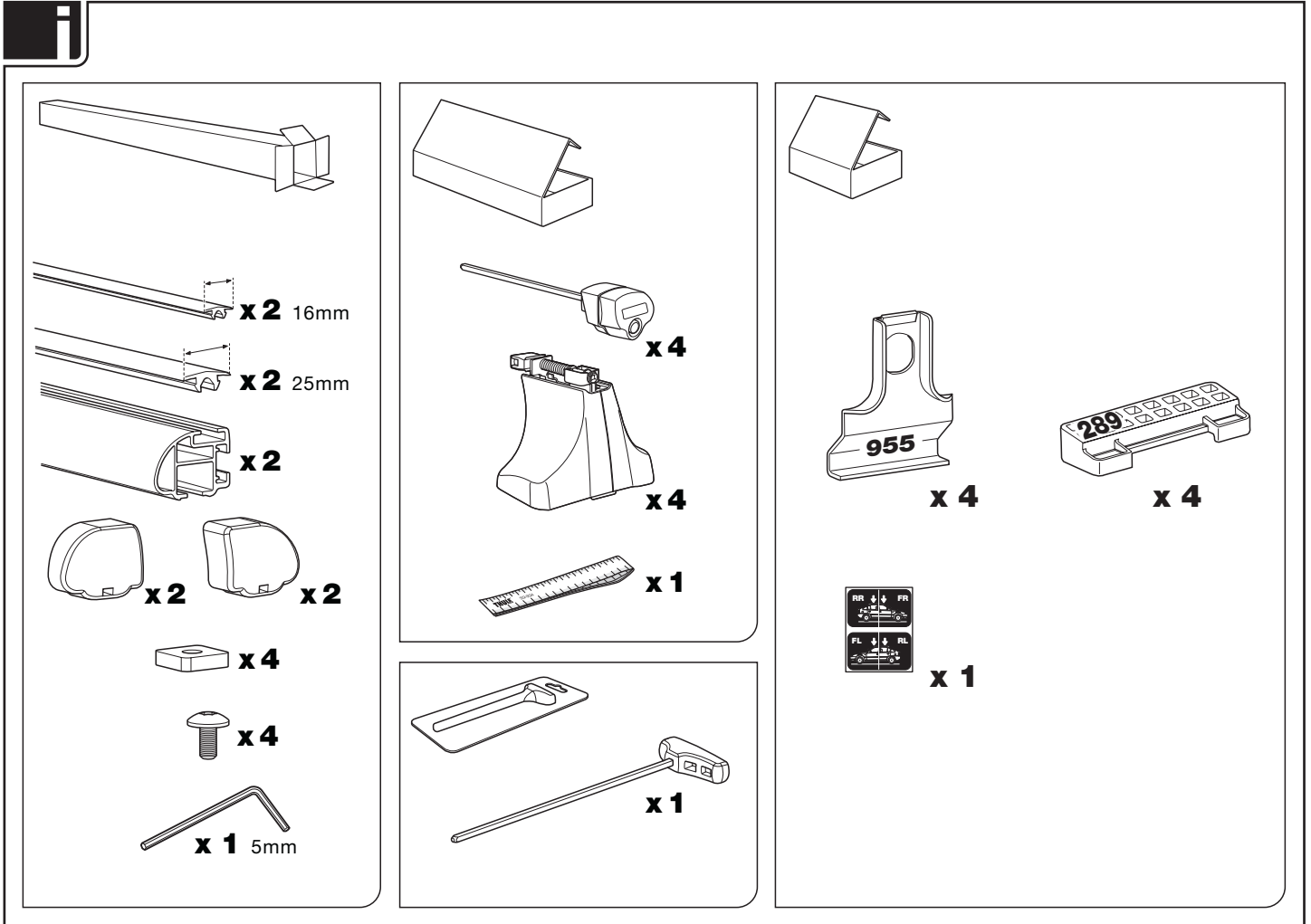
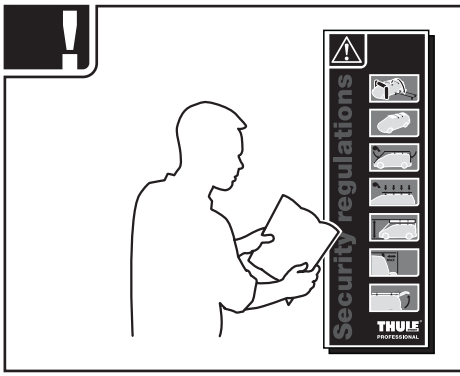


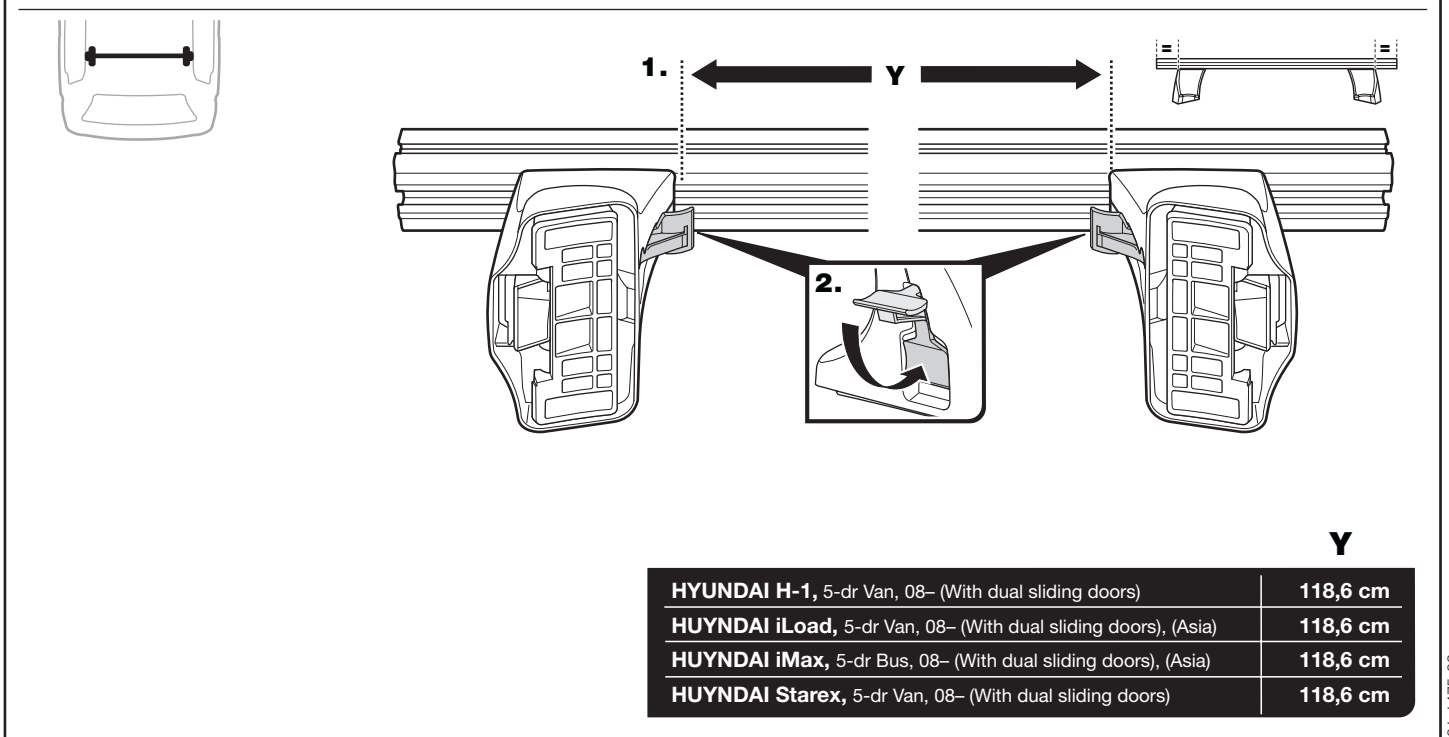
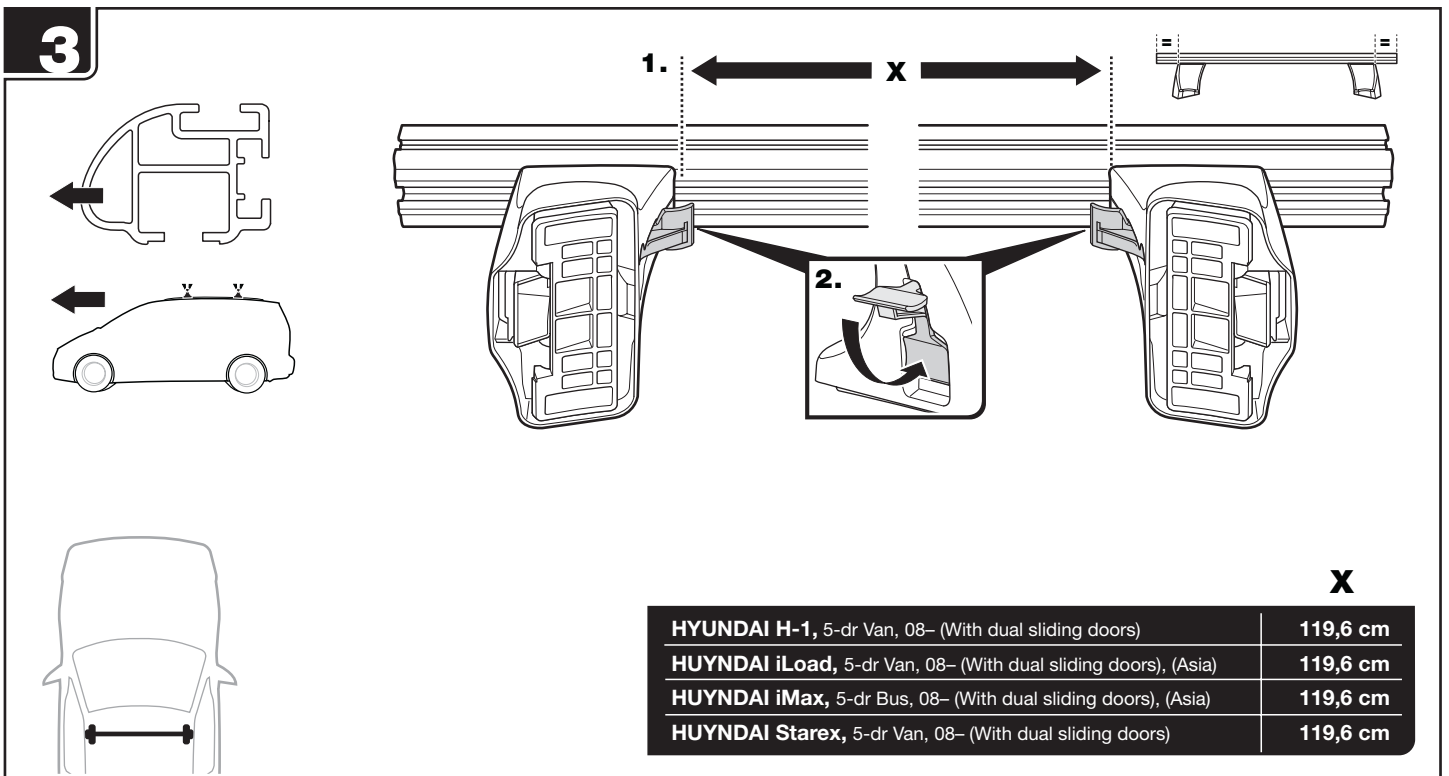
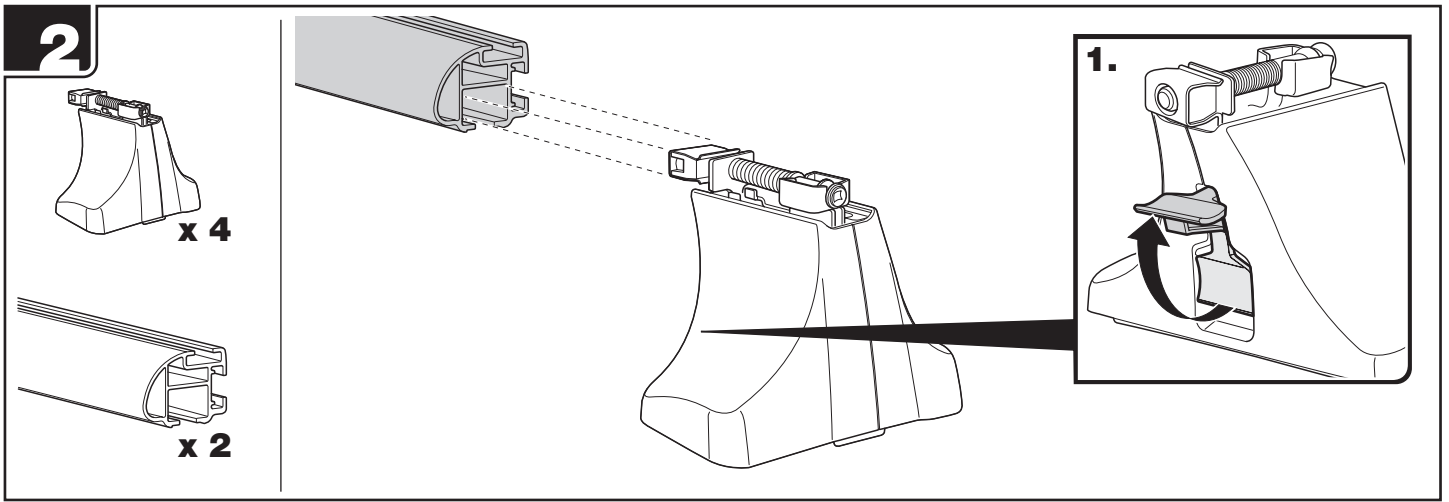
Thule Sweden AB, Box 69, 330 33 Hillerstorp, SWEDEN

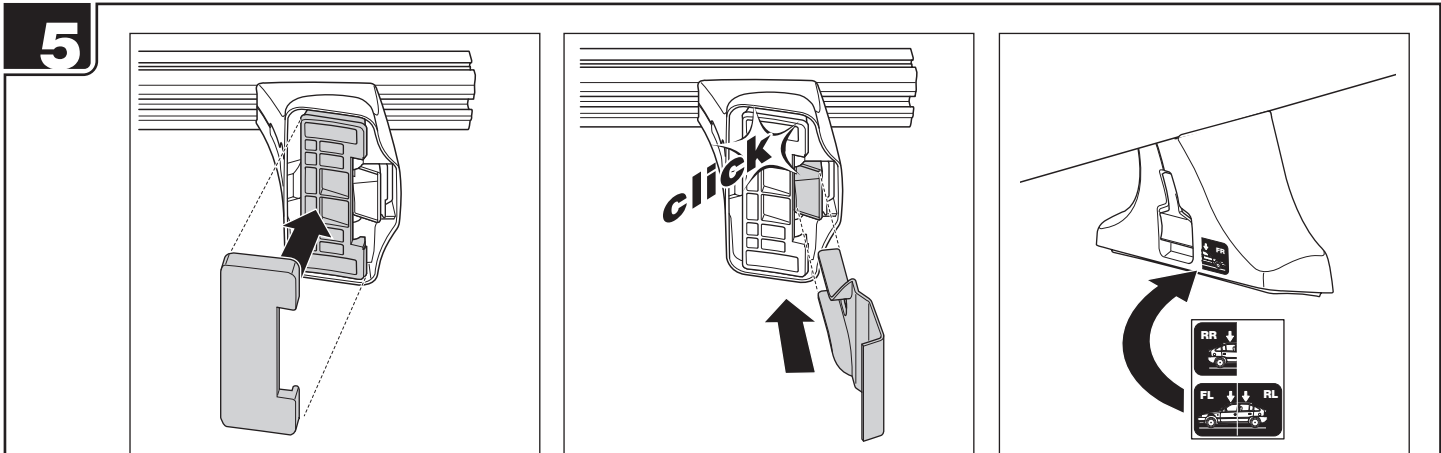
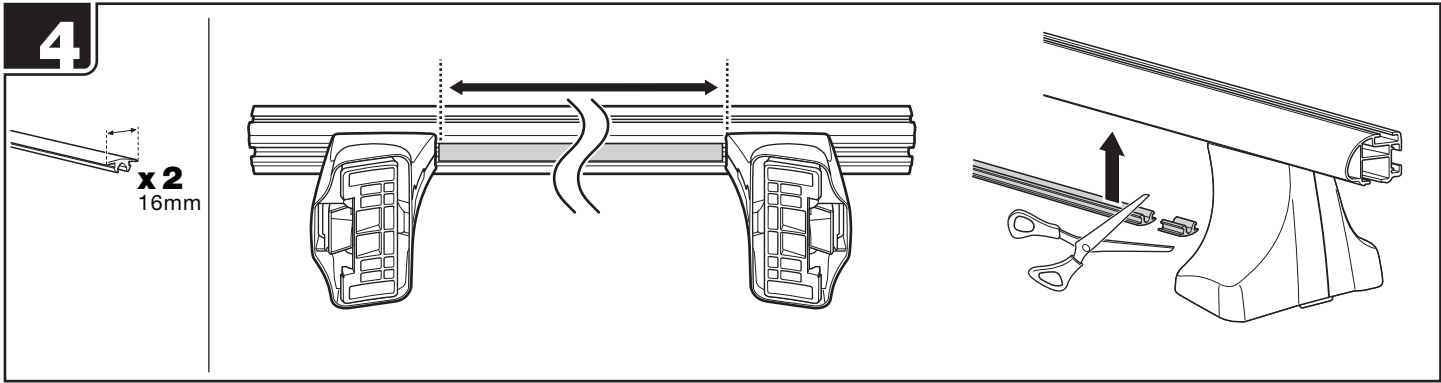
www.thuleprofessional.com

info@thule.com

THULE[®]
SWEDEN
PROFESSIONAL





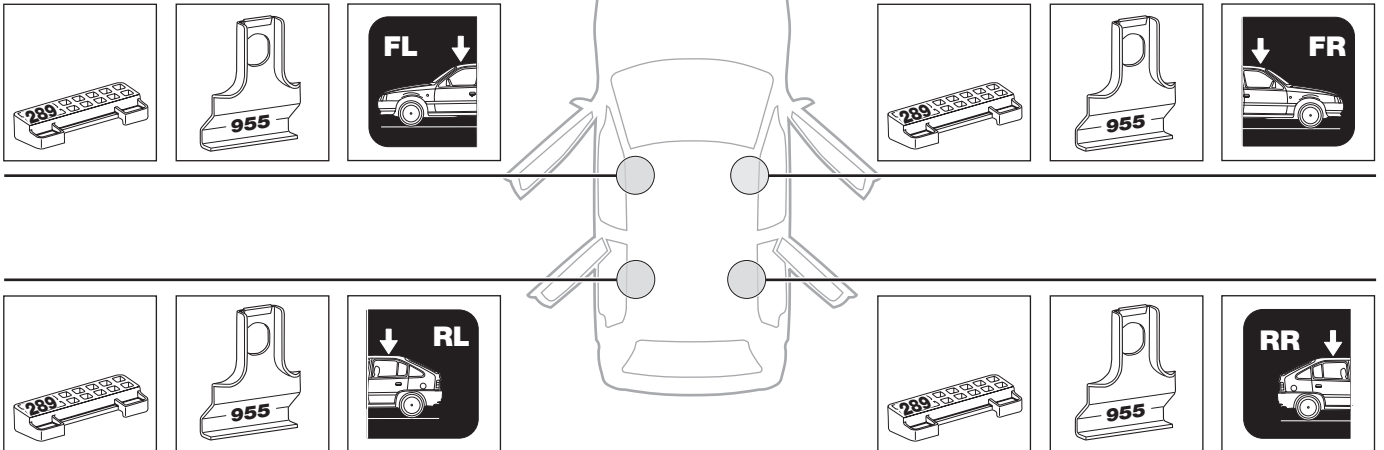


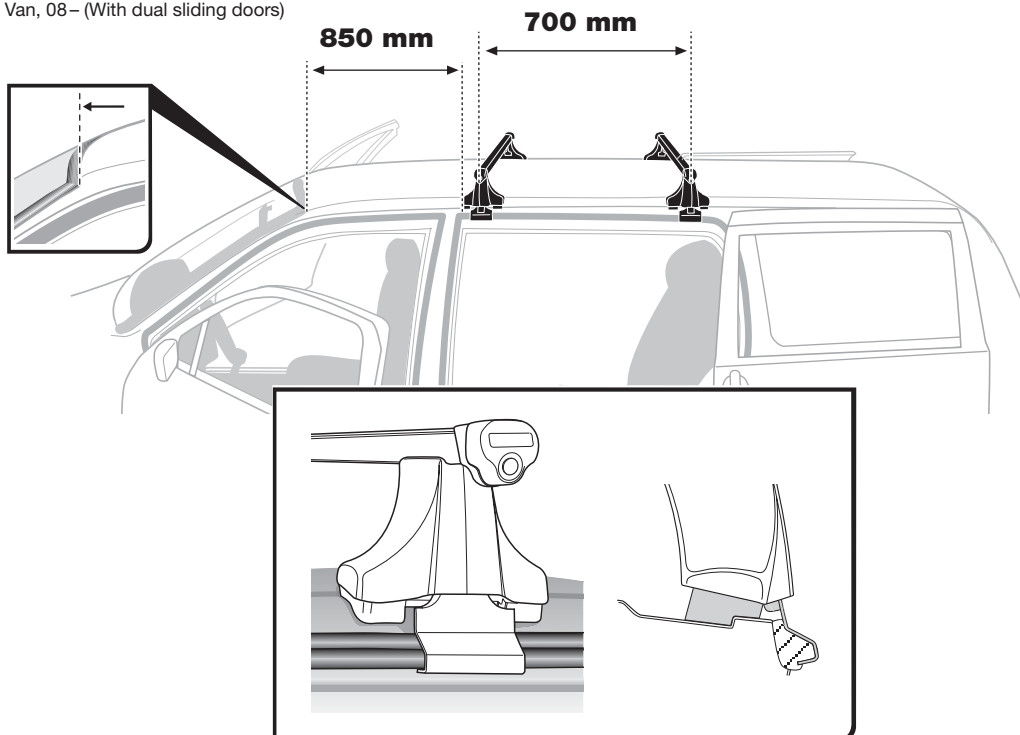
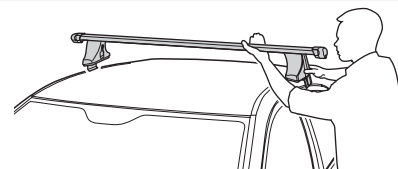
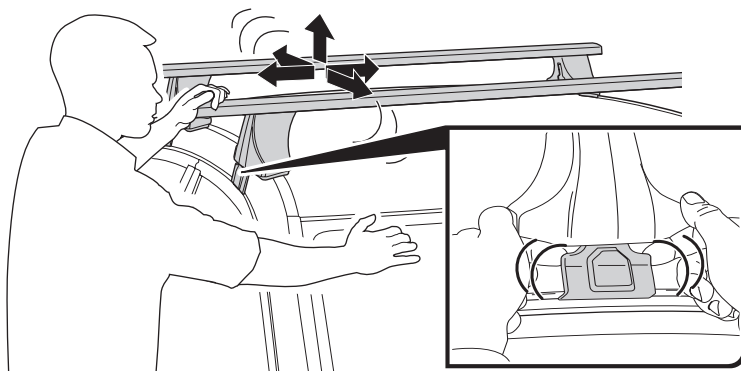
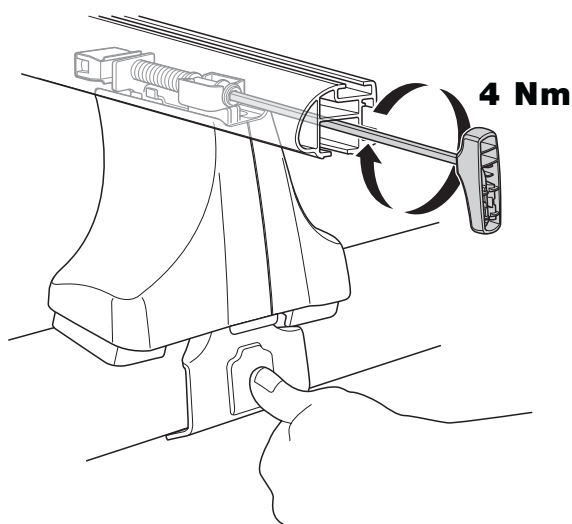
HYUNDAI H-1, 5-dr Van, 08 – (With dual sliding doors)

HYUNDAI iLoad, 5-dr Van, 08 – (With dual sliding doors), (Asia)

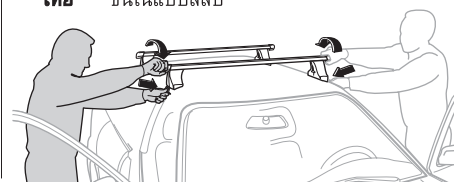
HYUNDAI iMax, 5-dr Bus, 08 – (With dual sliding doors), (Asia)

HYUNDAI Starex, 5-dr Van, 08 – (With dual sliding doors)








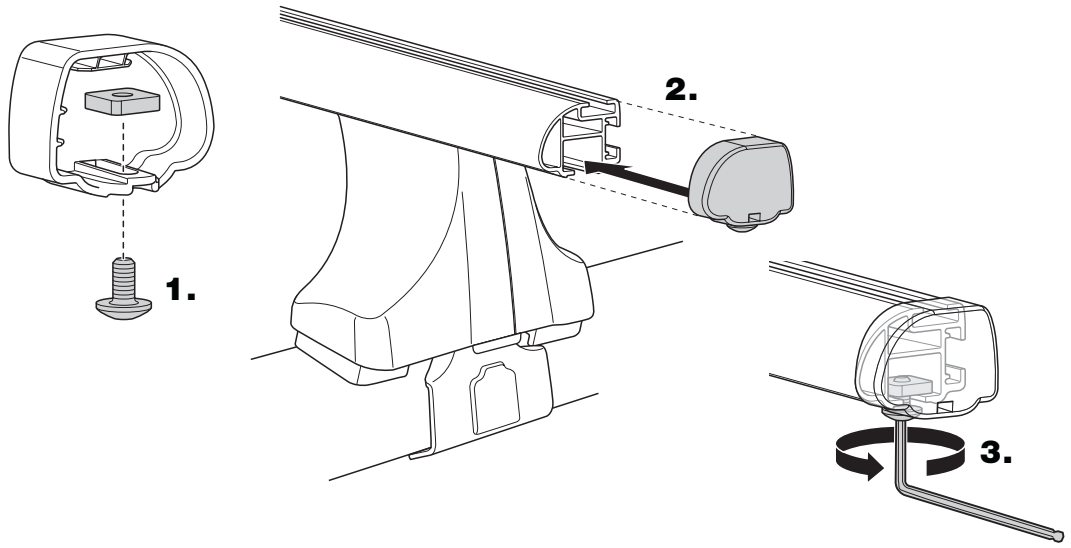
6**HYUNDAI H-1**, 5-dr Van, 08 – (With dual sliding doors)**HYUNDAI iLoad**, 5-dr Van, 08 – (With dual sliding doors), (Asia)**HYUNDAI iMax**, 5-dr Bus, 08 – (With dual sliding doors), (Asia)**HYUNDAI Starex**, 5-dr Van, 08 – (With dual sliding doors)**7**

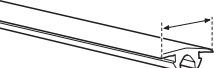
- GB** Tighten alternately
D Die Schrauben abwechselnd anziehen
F Serrer alternativement chaque côté
NL Afwisselend aan de linker- en de rechterkant aandraaien
I Serrare alternativamente
E Alternare il serraggio delle viti
PT Aperte alternadamente
S Dra åt växelvis
FIN Kierrä vuorotellen
EST Pinguldage vaheldumisi
LAT Pievelciēt pamišus
LIT Užsukinėkite pakaitomis
PL Śruby dokręcaj naprzemiennie
RU Затягивайте попеременно
CZ Pokręťta bagażníka dokręcaj dokręcaj naprzemiennie.
SK Doťahujte striedavo
SLO Privijajte izmenično.
HR Naizmjenično zategnite
HU Egymástól függetlenül szorítandó
GR Σφίγγετε εναλλάξ
TR Dönüşümlü sıkın
中文 交替拧紧
한국어 번갈아 가며 조이십시오.
日本語 交互に締め付けてください。
ไทย ชับในแบบสลับ

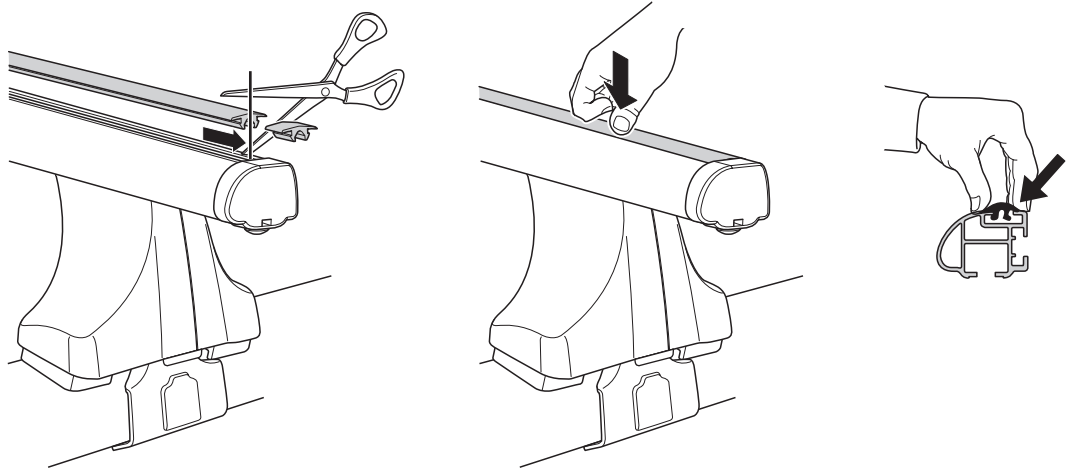


8

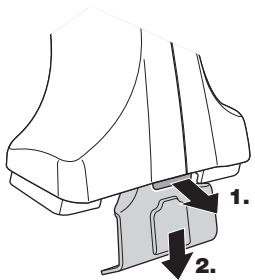
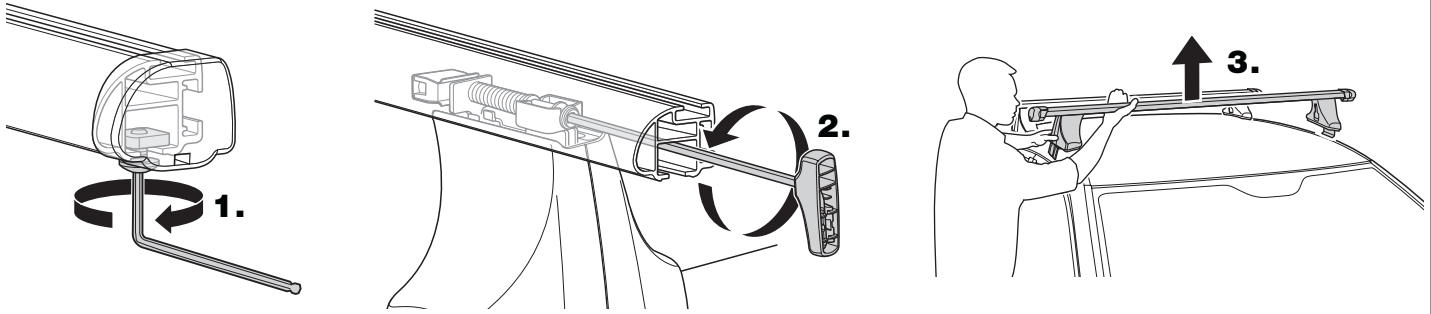
-  **x 2**
-  **x 2**
-  **x 4**
-  **x 4**
-  **x 1** 5mm

**9**

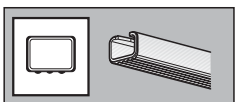
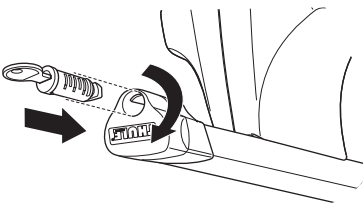
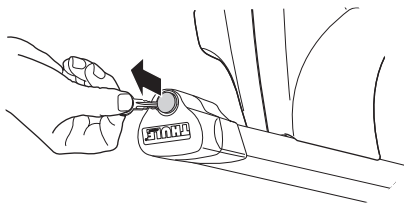
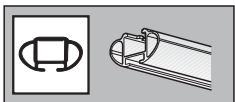
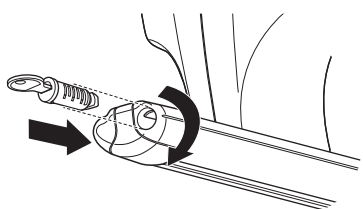
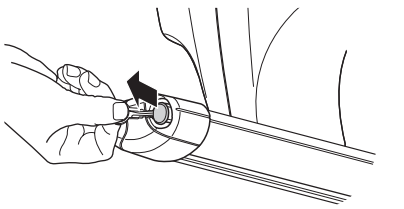
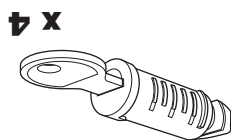
-  **x 2**
25mm

**i**

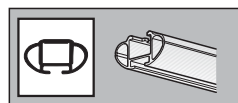
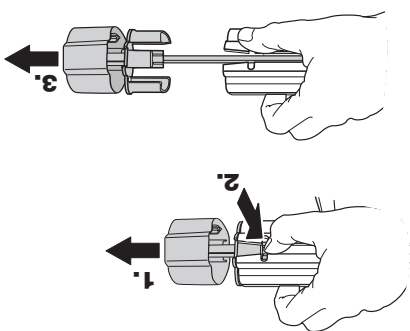
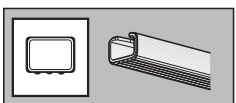
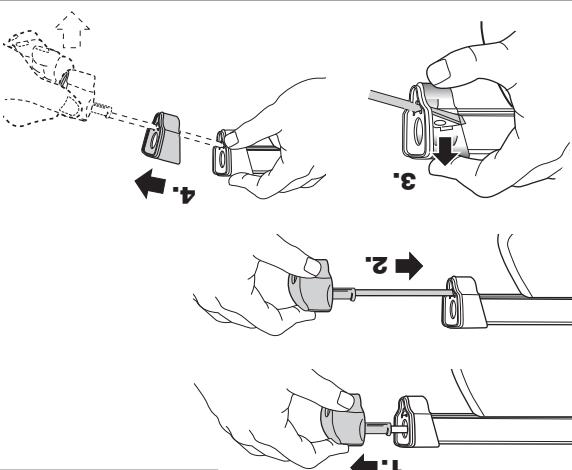
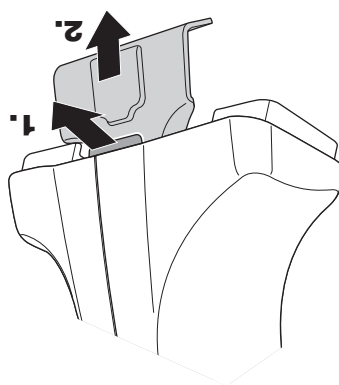
- | | | | | |
|----------------------|------------------------|--------------------------|---------------------------|-----------------|
| GB Removal | E Desmontaje | LAT Noņemšana | SK Demontáž | TR Sökme |
| D Demontieren | PT Remoção | LIT Nuėmimas | SLO Odstranjevanje | 中文 拆除 |
| F Démontage | S Demonerling | PL Wymontowywanie | HR Uklanjanje | 日本語 取り外し |
| NL Demontage | FIN Irrotus | RU Снятие | HU Leszerelés | 한국어 분리 |
| I Rimozione | EST Eemaldamine | CZ Odmontování | GR Αφαίρεση | ไทย การถอด |



THULE
ONE
KEY
SYSTEM



Fit Tips!



- GB** Removal
- D** Demontieren
- F** Démontage
- NL** Demontage
- I** Rimozione
- E** Desmontaje
- PT** Remoção
- S** Demontering
- FIN** Irrotus
- EST** Eemaldamine

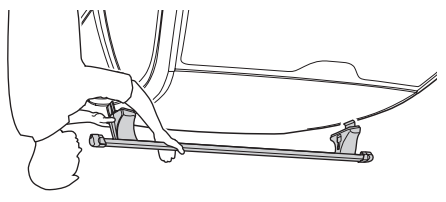
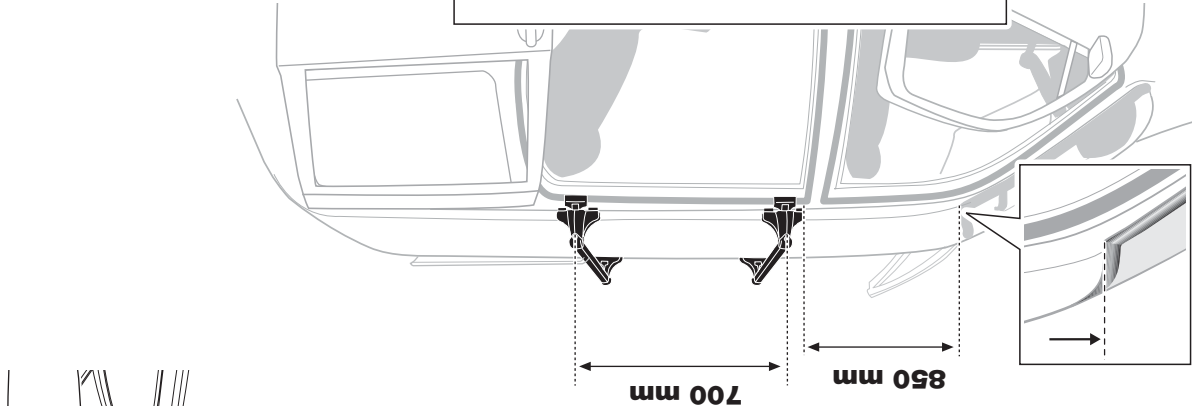
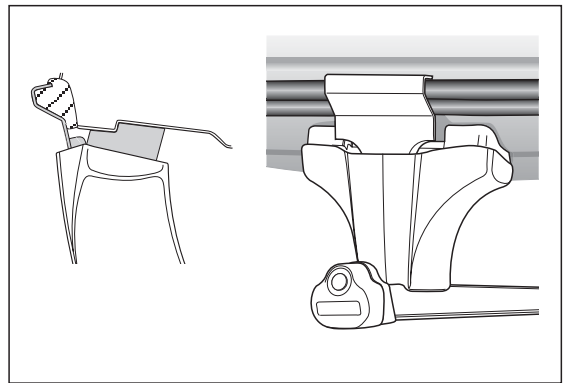
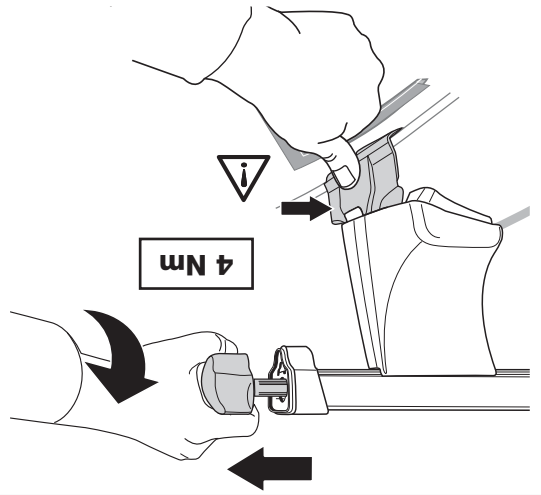
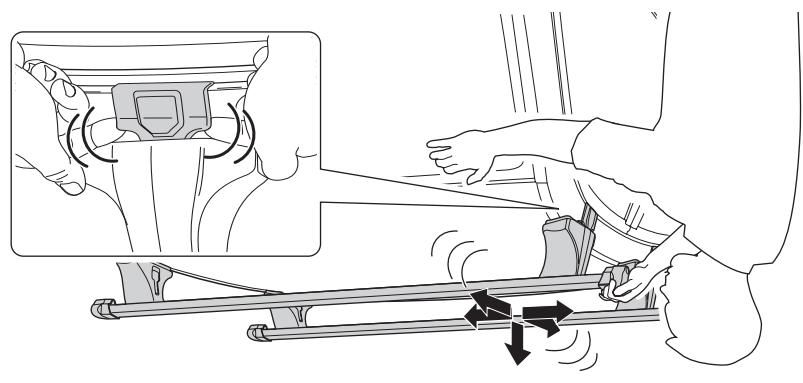
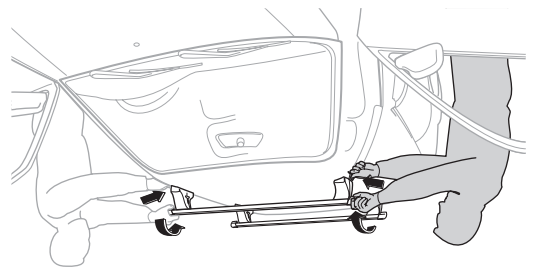
- LAT** Nopemšana
- LIT** Nuėmimas
- PL** Wymontowywanie
- RU** Чашне
- CZ** Odmontování

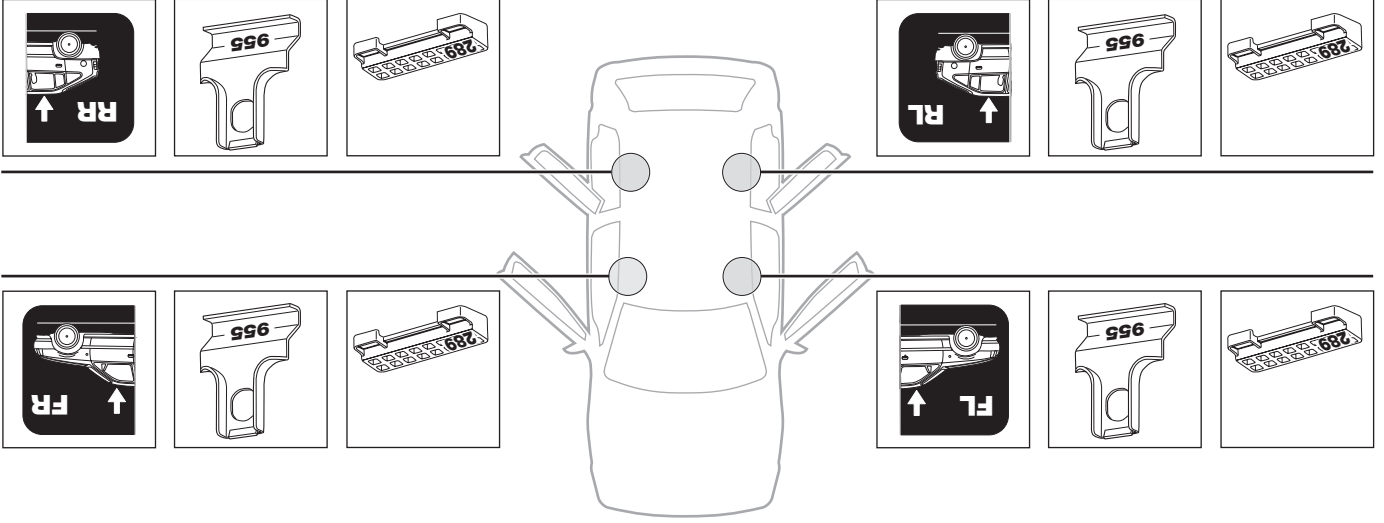
- SK** Demontáž
- SLO** Odstranjevanje
- HR** Uklanje
- HU** Leszerelés
- GR** Αφαίρεση

- TR** Sökme
- 中文** 拆除
- 日本語** 取外し
- 한국어** 분리
- ไทย** ถอดออก

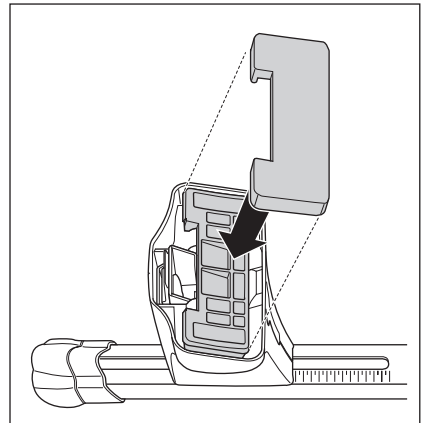
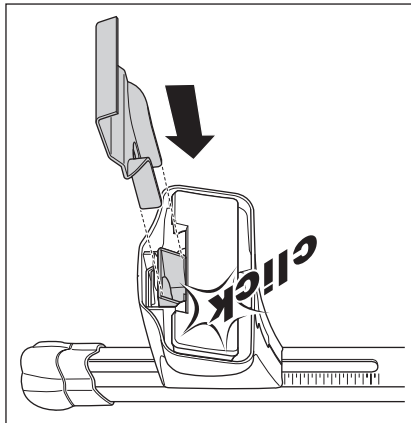
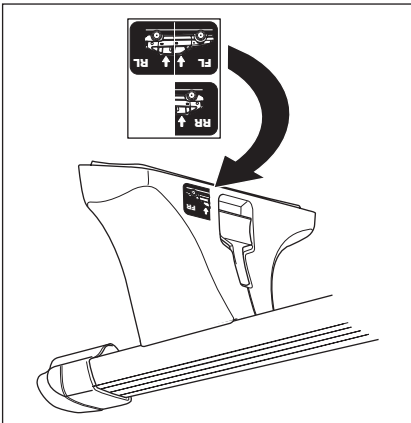
- GB** Tighen alternately
- D** Die Schrauben abwechselnd anziehen
- F** Serrer alternativement chaque côté
- NL** Afwisselend aan de linker- en de rechterkant aandraaien
- I** Serrare alternativamente
- E** Alternare il serraggio delle viti
- PT** Aperte alternadamente
- S** Dra åt växelvis
- FIN** Kierrä vuorotellen
- EST** Pinguldage vaheldumisi
- LAT** Pielietiet pamīsus
- LIT** Užsukinėkite pakaitomis

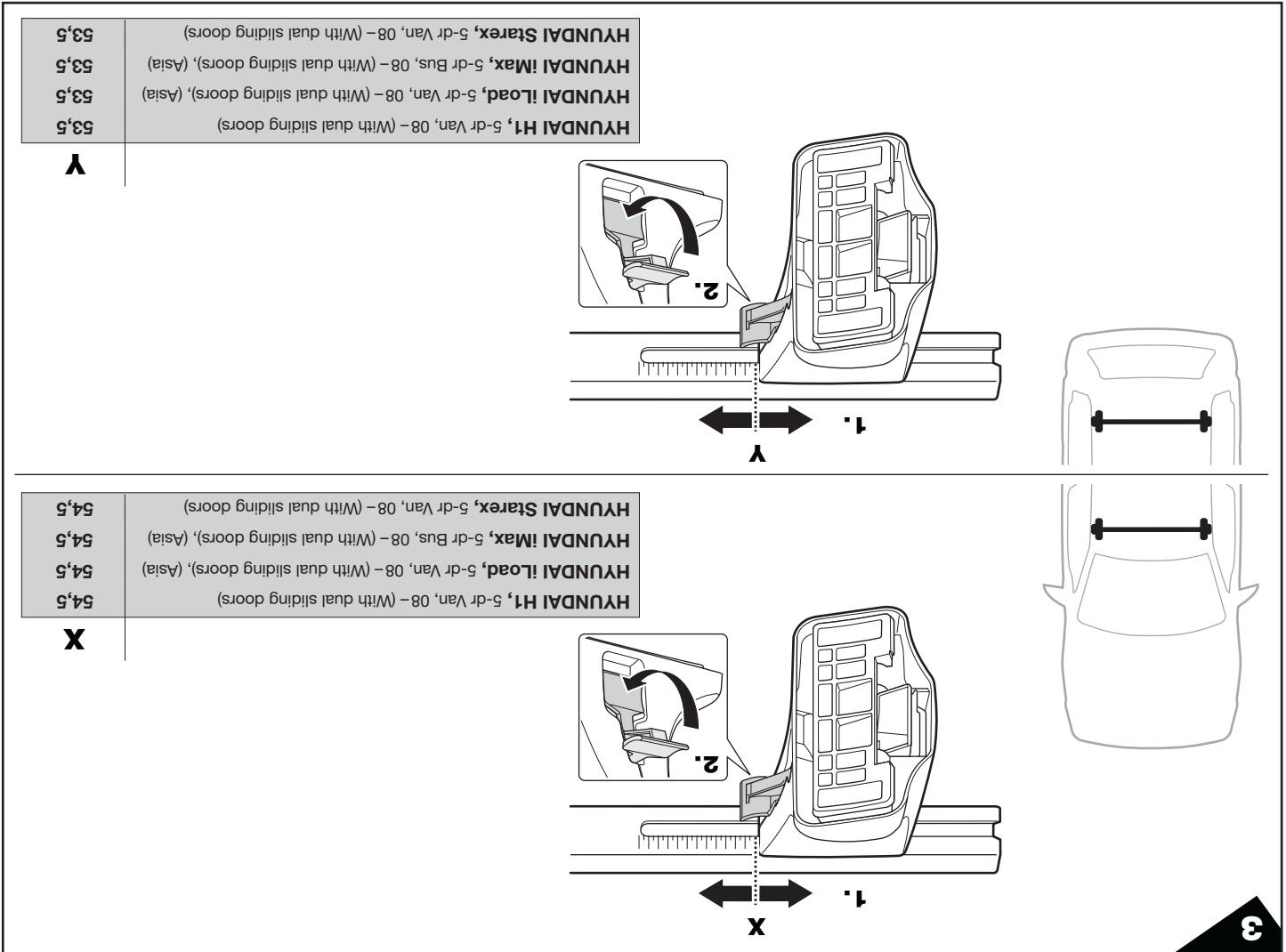
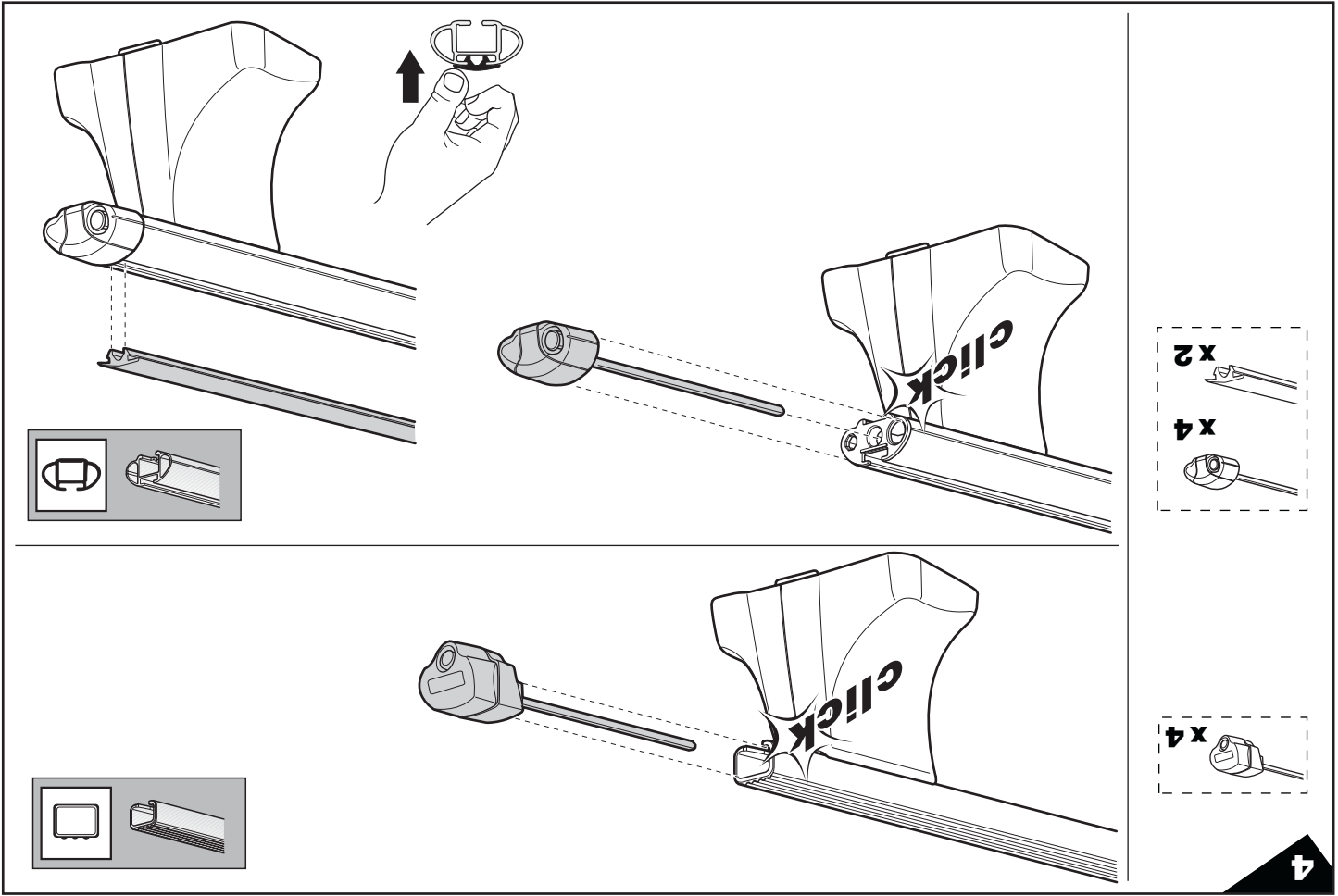
- PL** Śruby dokręcaj naprzemiennie
- RU** Затягивайте попеременно
- CZ** Pokrétá bagazníka dokręcaj dokřečaj naprzemiennie.
- SK** Dotahujte striedavo.
- SLO** Privijajte izmenično.
- HR** Naizmjenućno zategnite
- HU** Egyarástól fűggetlenül szorítandó
- GR** Σφιγγείτε εναλλάξ
- TR** Dönüşümüü sikin
- 中文** 交替拧紧
- 한국어** 번갈아 가며 조이십시오.
- 日本語** 交互に締め付けてください。
- ไทย** หมุนสลับกัน

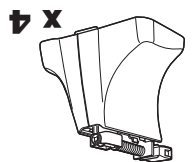
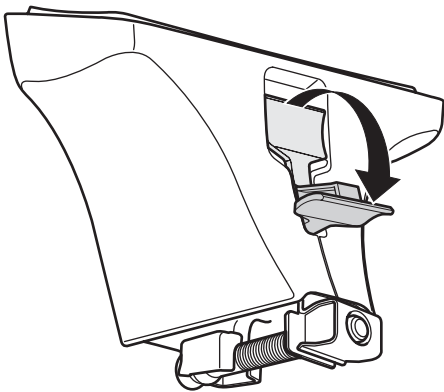
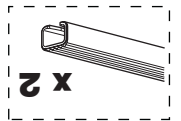
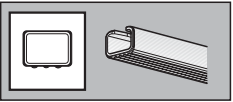
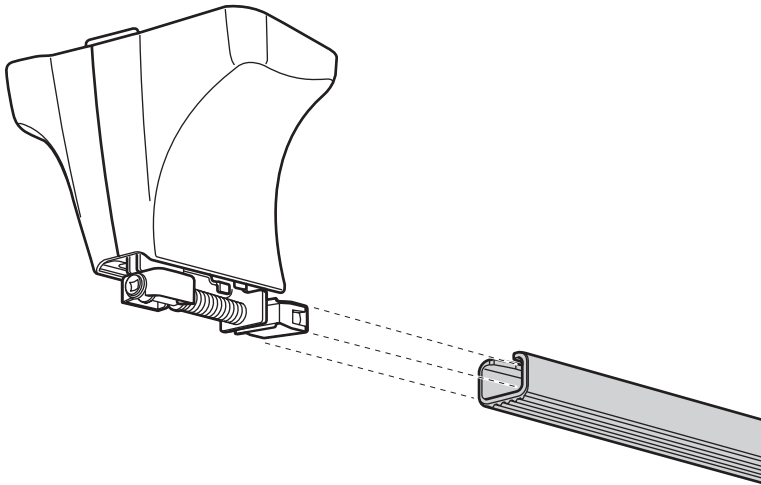
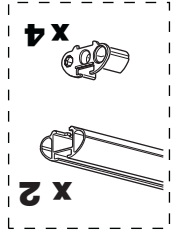
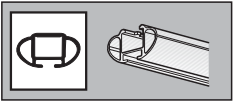
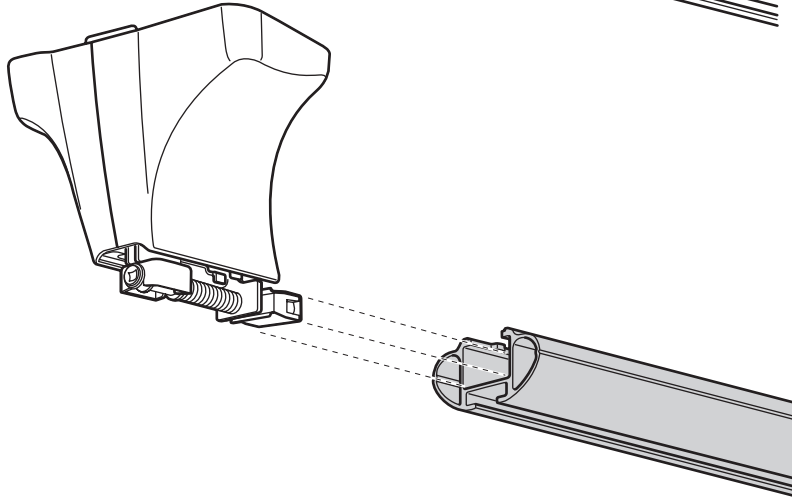
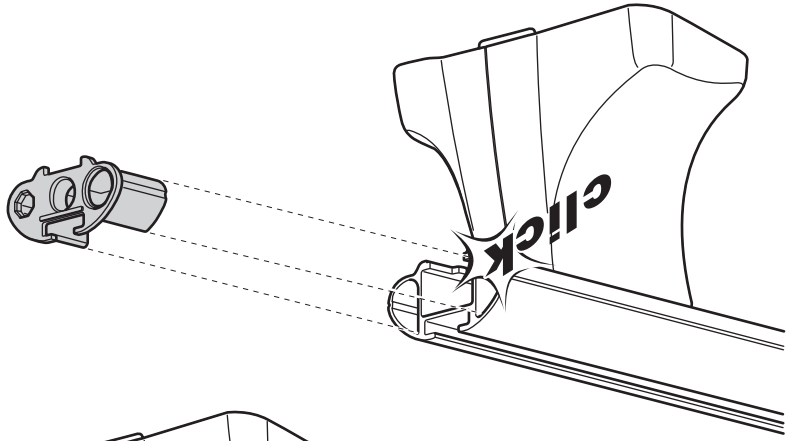




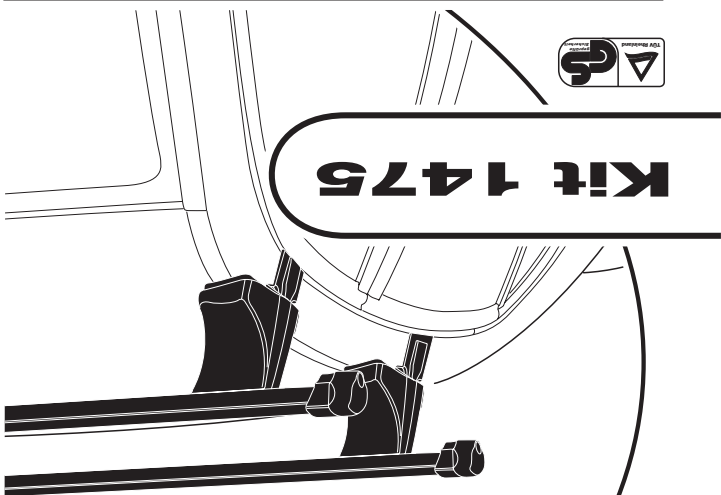
HYUNDAI H-1, 5-dr Van, 08 – (With dual sliding doors)
HYUNDAI iLoad, 5-dr Van, 08 – (With dual sliding doors), (Asia)
HYUNDAI iMax, 5-dr Bus, 08 – (With dual sliding doors), (Asia)
HYUNDAI Starex, 5-dr Van, 08 – (With dual sliding doors)







Follow me...



KIT 1475

RAPID SYSTEM

HYUNDAI H-1, 5-dr Van, 08 – (With dual sliding doors)
HYUNDAI iLoad, 5-dr Van, 08 – (With dual sliding doors), (Asia)
HYUNDAI iMax, 5-dr Bus, 08 – (With dual sliding doors), (Asia)
HYUNDAI Starex, 5-dr Van, 08 – (With dual sliding doors)

- GB Fitting instructions
- D Montageanleitung
- F Instructions de montage
- NL Montage-instructies
- I Istruzioni per il montaggio
- E Instrucciones de montaje
- PT Instruções de Montagem
- S Monteringsanvisning
- FIN Asemusohje
- EST Paigaldusjuhend
- LAT Stiprināšanas instrukcija
- LIT Pritvirtinimo instrukcijos
- PL Instrukcja montażu
- RU Инструкция по установке
- CZ Návod na montáž
- SK Návod na montáž
- SLO Navodila za pritrjevanje
- HR Uputa za sastavljanje
- HU A felszerelés módja
- GR Οδηγίες συναρμολόγησης
- TR Montaj talimatları
- 中文 安装说明
- 日本語 取扱(取付)説明書
- 한국어 설치 지침
- ไทย คู่มือการติดตั้ง

