

Kit 1509

DODGE Dakota, 4-dr Club Cab, 05-08

DODGE Dakota, 4-dr Crew Cab, 09–

DODGE Dakota, 4-dr Extended Cab, 09–

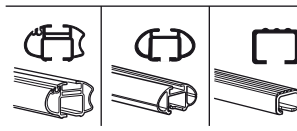
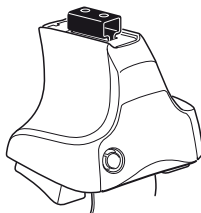
DODGE Dakota, 4-dr Quad Cab, 00-04

DODGE Dakota, 4-dr Quad Cab, 05-08

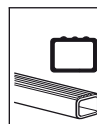
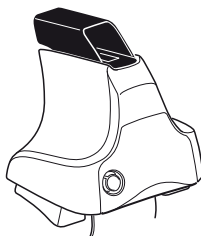
MITSUBISHI Raider, 4-dr Club Cab, 05–

MITSUBISHI Raider, 4-dr Quad Cab, 05–

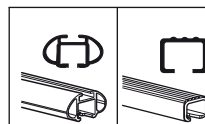
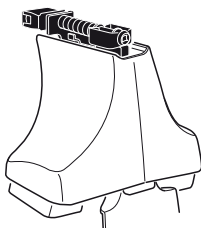
480R
754



480

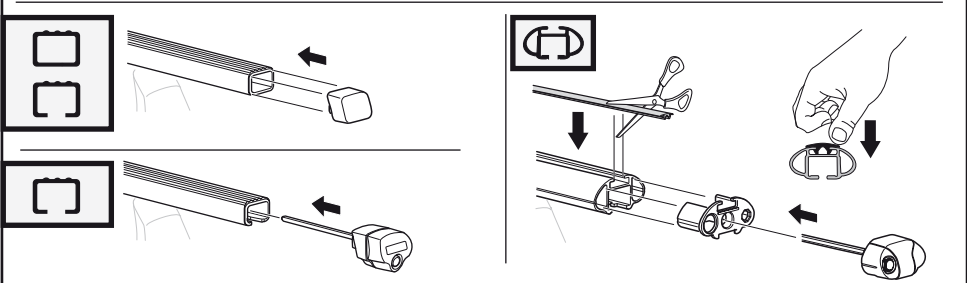
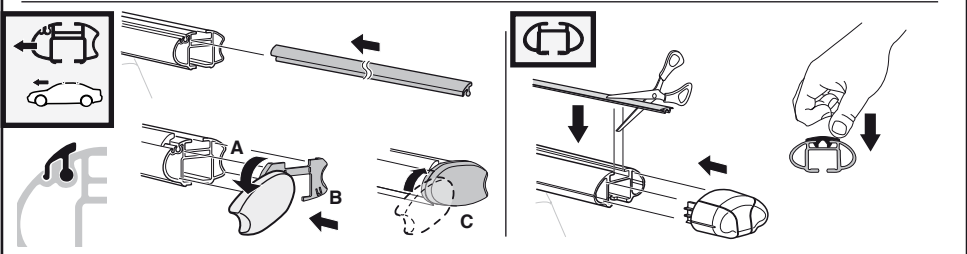
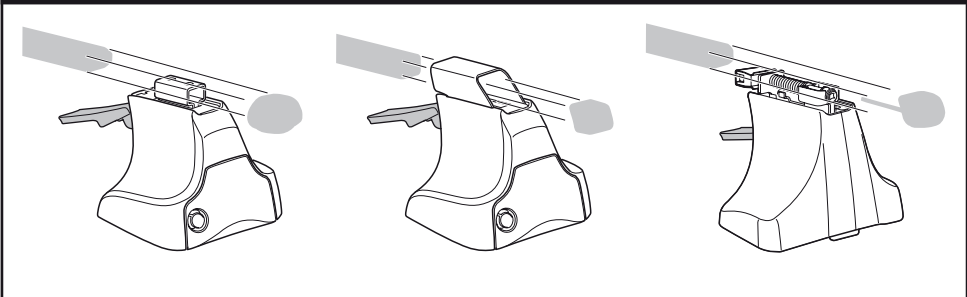
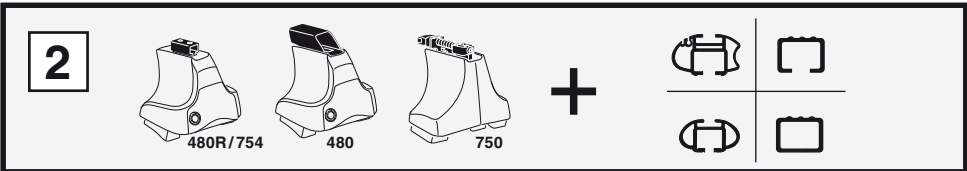
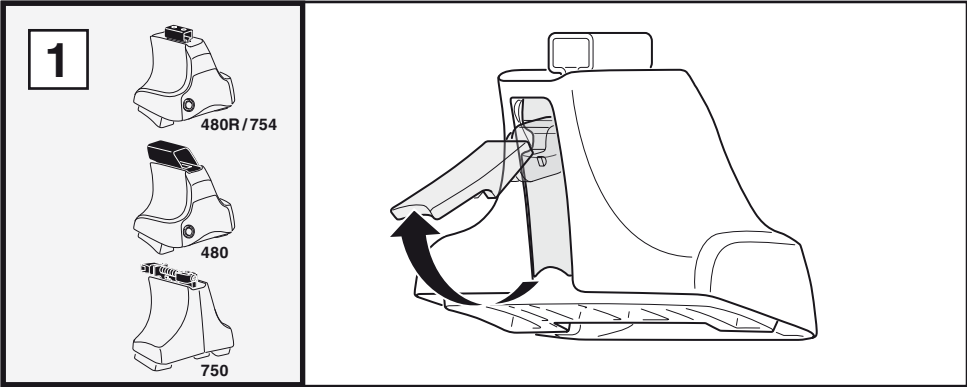


750



x2	x2	x2	x2	x2
x2		x2	x2	
x2		x2	x2	
x4		x4		

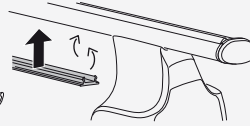
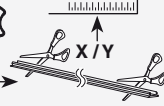
Kit



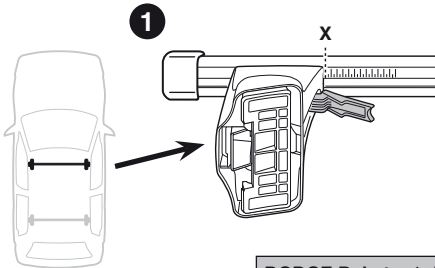
3



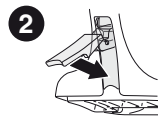
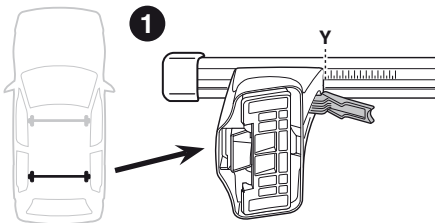
754



750



	X
DODGE Dakota , 4-dr Club Cab, 05-08	34
DODGE Dakota , 4-dr Crew Cab, 09-	34
DODGE Dakota , 4-dr Extended Cab, 09-	34
DODGE Dakota , 4-dr Quad Cab, 00-04	34
DODGE Dakota , 4-dr Quad Cab, 05-08	34
MITSUBISHI Raider , 4-dr Club Cab, 05-	34
MITSUBISHI Raider , 4-dr Quad Cab, 05-	34



	Y
DODGE Dakota , 4-dr Club Cab, 05-08	32
DODGE Dakota , 4-dr Crew Cab, 09-	32
DODGE Dakota , 4-dr Extended Cab, 09-	32
DODGE Dakota , 4-dr Quad Cab, 00-04	32
DODGE Dakota , 4-dr Quad Cab, 05-08	32
MITSUBISHI Raider , 4-dr Club Cab, 05-	32
MITSUBISHI Raider , 4-dr Quad Cab, 05-	32

3

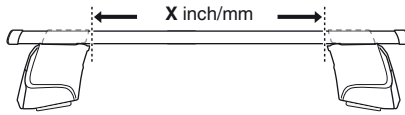


480R

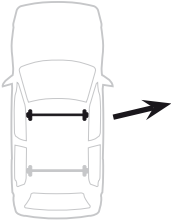
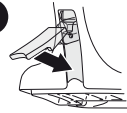


480

1

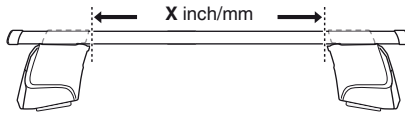


2

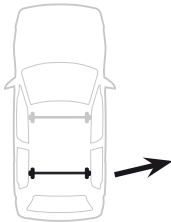
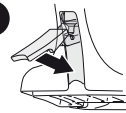


	X inch	X mm
DODGE Dakota , 4-dr Club Cab, 05-08	39"	991 mm
DODGE Dakota , 4-dr Crew Cab, 09–	39"	991 mm
DODGE Dakota , 4-dr Extended Cab, 09–	39"	991 mm
DODGE Dakota , 4-dr Quad Cab, 00-04	39"	991 mm
DODGE Dakota , 4-dr Quad Cab, 05-08	39"	991 mm
MITSUBISHI Raider , 4-dr Club Cab, 05–	39"	991 mm
MITSUBISHI Raider , 4-dr Quad Cab, 05–	39"	991 mm

1



2

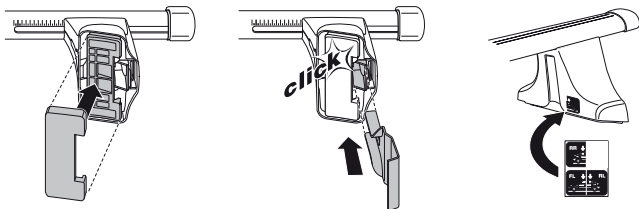
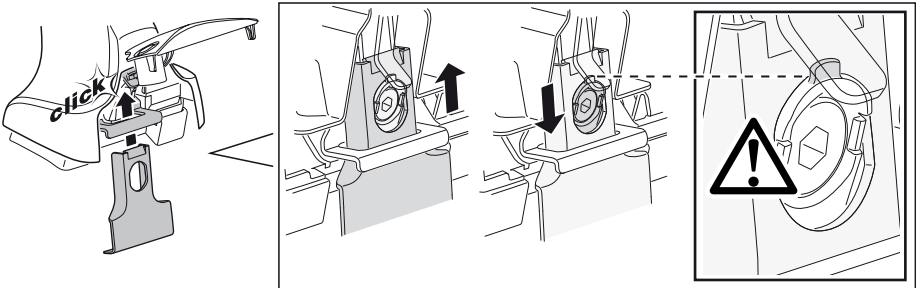
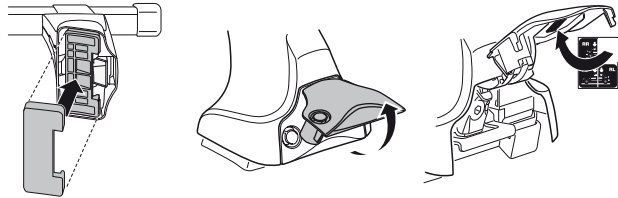
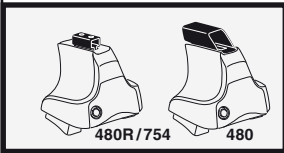
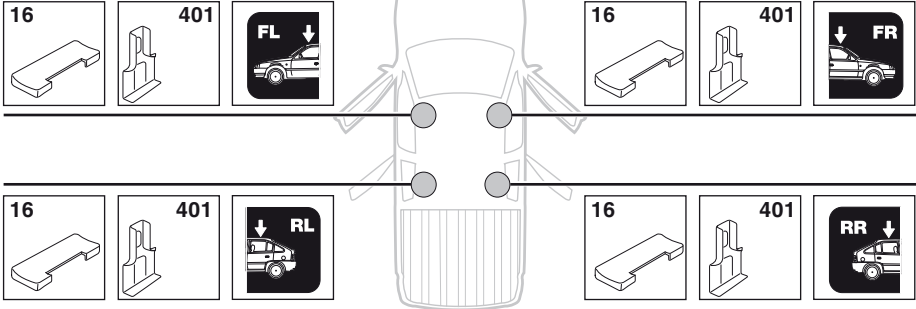


	X inch	X mm
DODGE Dakota , 4-dr Club Cab, 05-08	38 1/4"	971 mm
DODGE Dakota , 4-dr Crew Cab, 09–	38 1/4"	971 mm
DODGE Dakota , 4-dr Extended Cab, 09–	38 1/4"	971 mm
DODGE Dakota , 4-dr Quad Cab, 00-04	38 1/4"	971 mm
DODGE Dakota , 4-dr Quad Cab, 05-08	38 1/4"	971 mm
MITSUBISHI Raider , 4-dr Club Cab, 05–	38 1/4"	971 mm
MITSUBISHI Raider , 4-dr Quad Cab, 05–	38 1/4"	971 mm

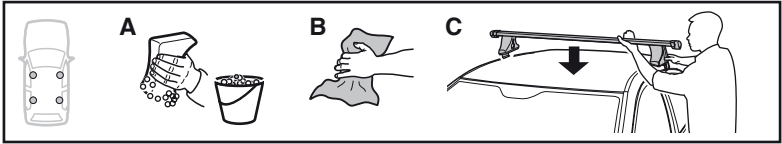
4

DODGE Dakota, 4-dr Club Cab, 05-08
DODGE Dakota, 4-dr Crew Cab, 09-
DODGE Dakota, 4-dr Extended Cab, 09-
DODGE Dakota, 4-dr Quad Cab, 00-04
DODGE Dakota, 4-dr Quad Cab, 05-08

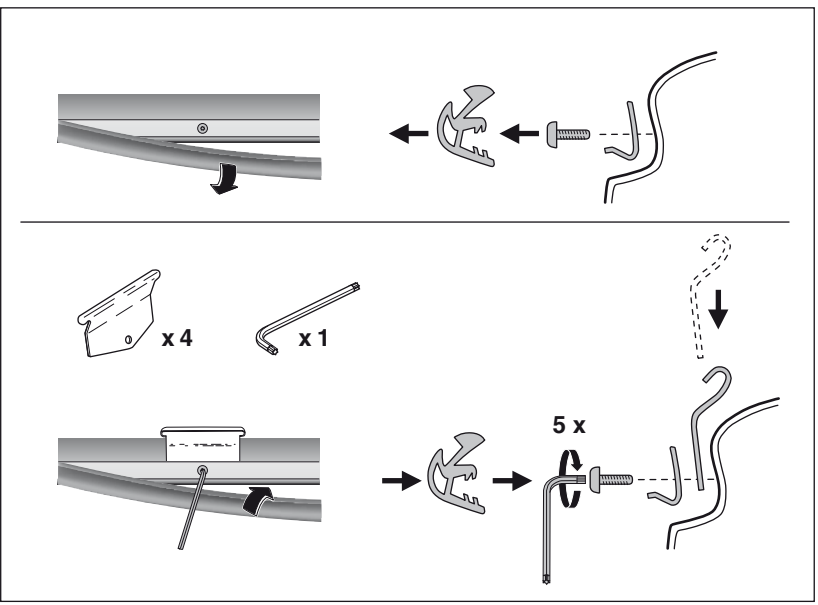
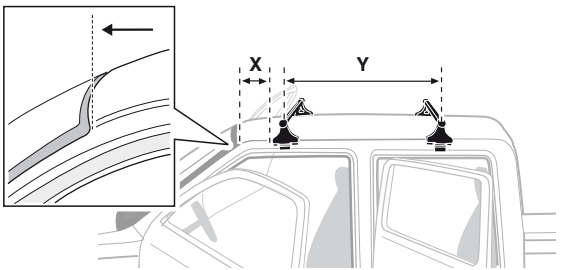
MITSUBISHI Raider, 4-dr Club Cab, 05-
MITSUBISHI Raider, 4-dr Quad Cab, 05-

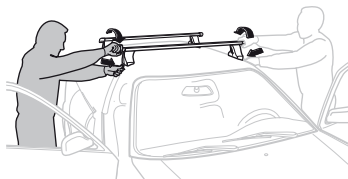
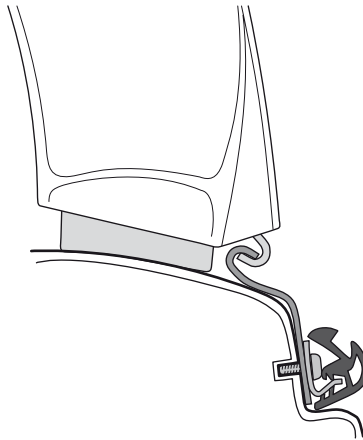
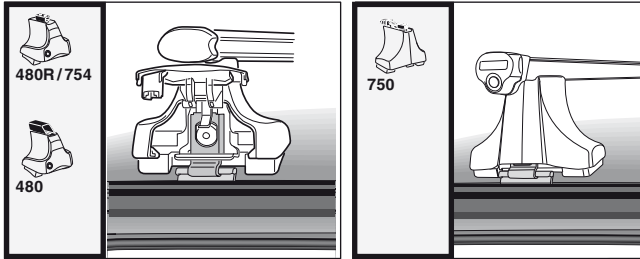


5



	X mm	Y mm	X inch	Y inch
DODGE Dakota, 4-dr Club Cab, 05-08	395 mm	685 mm	15 1/2"	27"
DODGE Dakota, 4-dr Crew Cab, 09-	395 mm	685 mm	15 1/2"	27"
DODGE Dakota, 4-dr Extended Cab, 09-	395 mm	685 mm	15 1/2"	27"
DODGE Dakota, 4-dr Quad Cab, 00-04	395 mm	685 mm	15 1/2"	27"
DODGE Dakota, 4-dr Quad Cab, 05-08	395 mm	685 mm	15 1/2"	27"
MITSUBISHI Raider, 4-dr Club Cab, 05-	395 mm	685 mm	15 1/2"	27"
MITSUBISHI Raider, 4-dr Quad Cab, 05-	395 mm	685 mm	15 1/2"	27"



6**GB/US** Tighten alternately**D** Die Schrauben abwechselnd anziehen**F** Serrer alternativement chaque côté**NL** Afwisselend aan de linker- en de rechterkant aandraaien**I** Alternare il serraggio delle viti**E** Serrare alternativamente**PT** Aperte alternadamente**S** Dra åt växelvis**FIN** Kierrä vuorotellen**EST** Pinguldage vaheldumisi**LAT** Pievelciēt pamīšus**LIT** Užsukinėkite pakaitomis**PL** Śruby dokręcaj naprzemiennie**RU** Затягивайте попеременно**CZ** Pohyblá bagážníka dokręcaj dokręcaj naprzemiennie.**SK** Dotahujte striedavo**SLO** Privijajte izmenično.**HR** Naizmjenično zategnite**HU** Egymástól függetlenül szorítandó**GR** Σφιγγετε εναλλάξ**TR** Dönüşümlü sıkın**中文** 交替拧紧**한국어** 번갈아 가며 조이십시오.**日本語** 交互に締め付けてください。**ไทย** ขึ้นในแบบสลับ

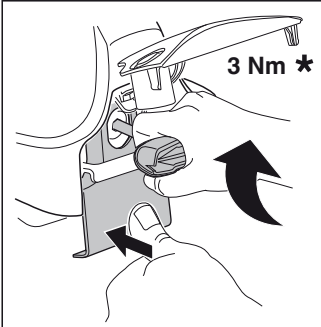
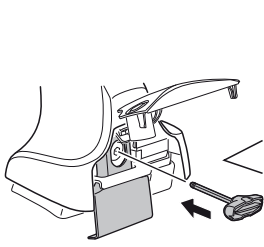
7



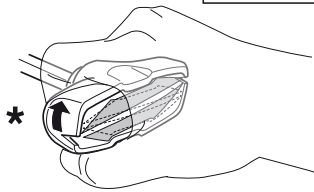
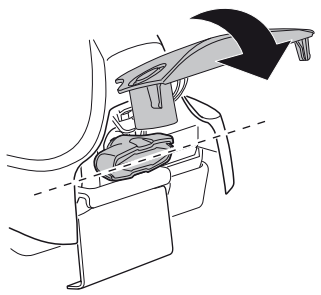
480R/754



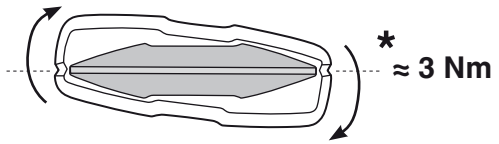
480



3 Nm *

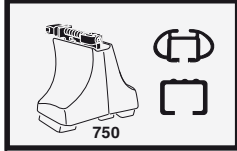


*

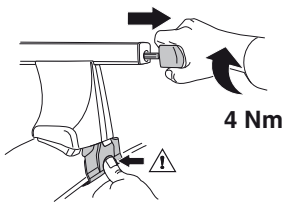


*

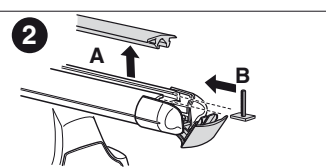
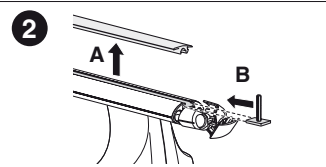
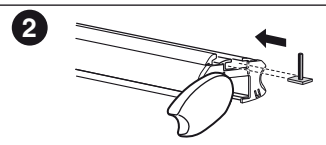
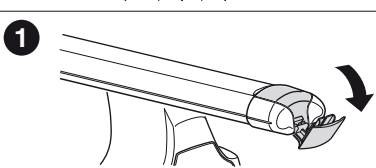
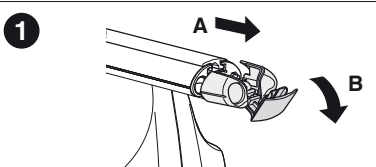
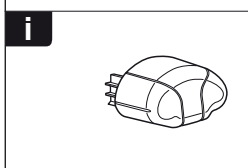
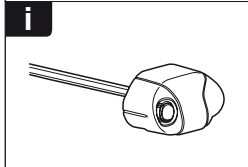
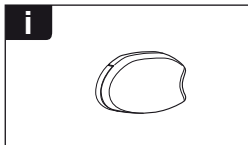
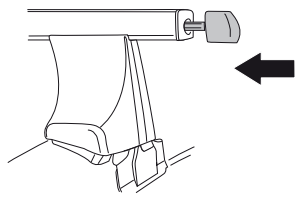
≈ 3 Nm

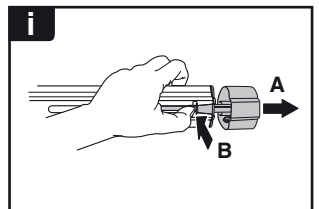
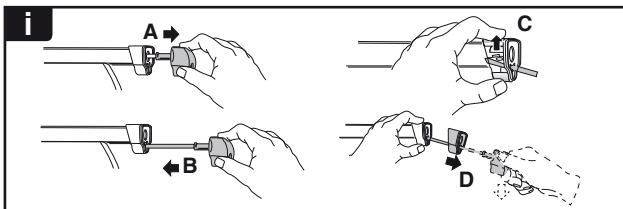
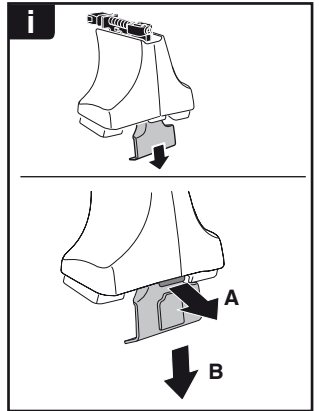
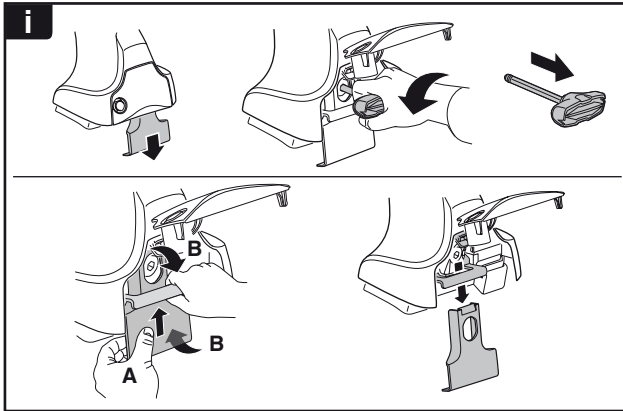
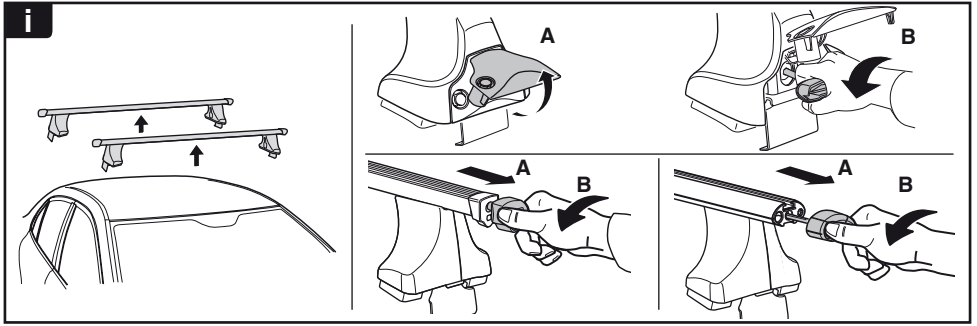


750

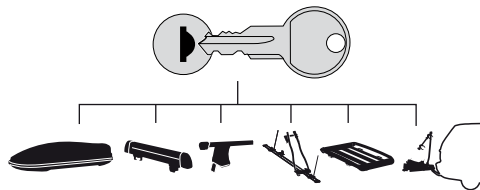







4 Nm

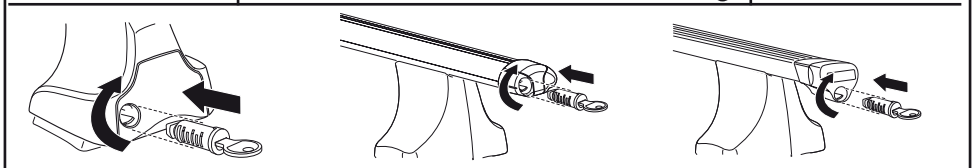




THULE
SWEDEN
**ONE
KEY
SYSTEM**



-  **544** (x4)
 -  **596** (x6)
 -  **588** (x8)
 -  **510** (x10)
 -  **452** (x12)
- NA
EUR
ASIA



WW ▶ Thule Sweden AB, Box 69, 330 33 Hillerstorp, SWEDEN
NA ▶ Thule Inc., 42 Silvermine Road, Seymour, Connecticut 06483, USA

info@thule.com
customer.service@thule.com

 www.thule.com