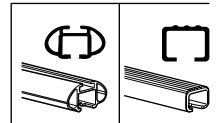
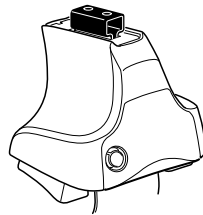


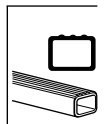
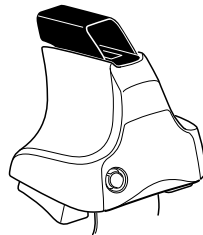
Kit 1573

SUZUKI Wagon R, 5-dr MPV, 08–

480R
754

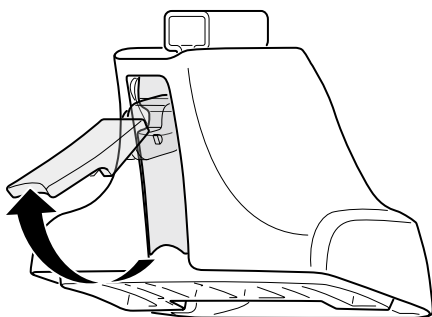
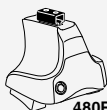


480



Kit

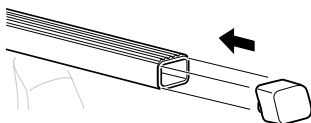
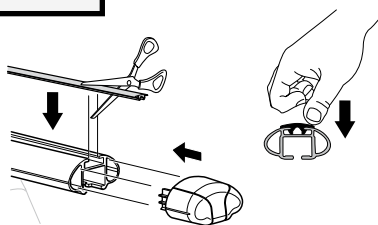
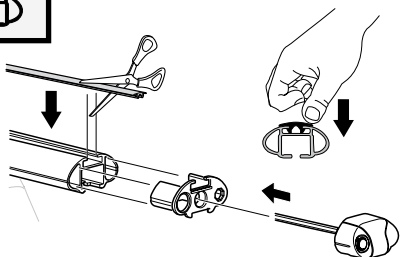
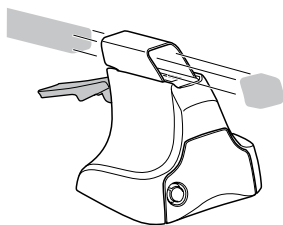
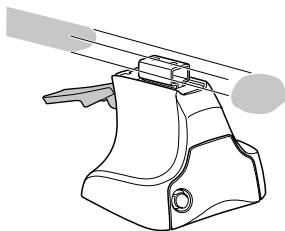
1



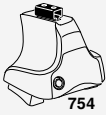
2



+

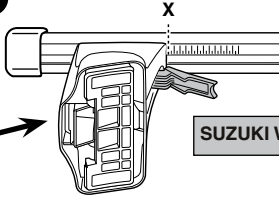
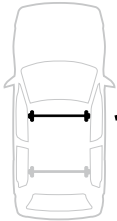


3

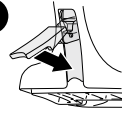


754

1



2

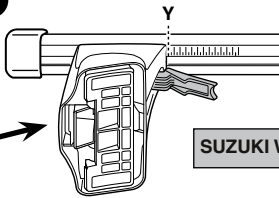


SUZUKI Wagon R, 5-dr MPV, 08-

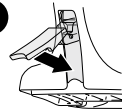
X

31

1



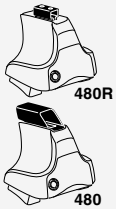
2



SUZUKI Wagon R, 5-dr MPV, 08-

Y

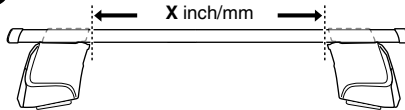
28



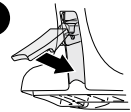
480R

480

1



2



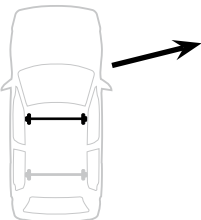
X inch

X mm

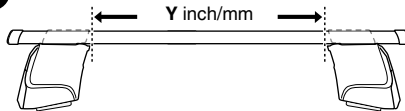
SUZUKI Wagon R, 5-dr MPV, 08-

37 ⁷/₈ "

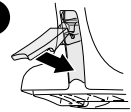
961 mm



1



2



Y inch

Y mm

SUZUKI Wagon R, 5-dr MPV, 08-

36 ⁵/₈ "

931 mm

4



480R/754



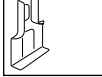
480

SUZUKI Wagon R, 5-dr MPV, 08-

248



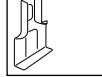
1076



248



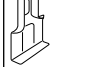
1076



03



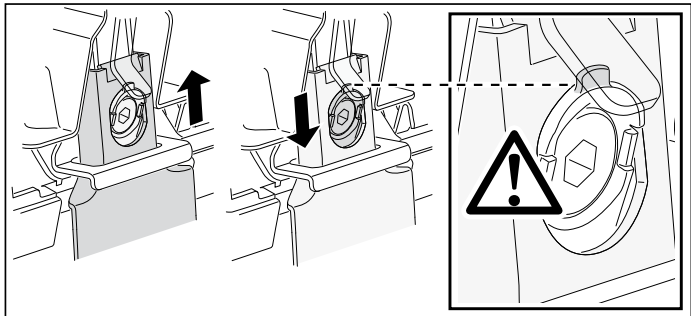
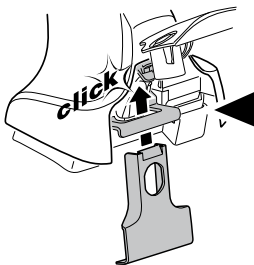
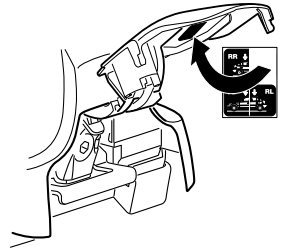
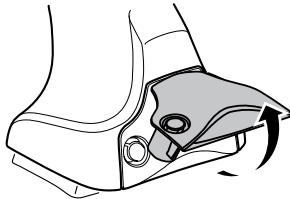
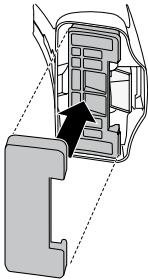
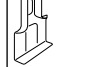
1077



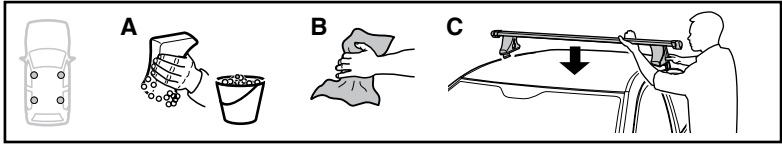
03



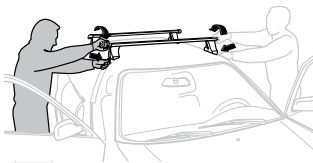
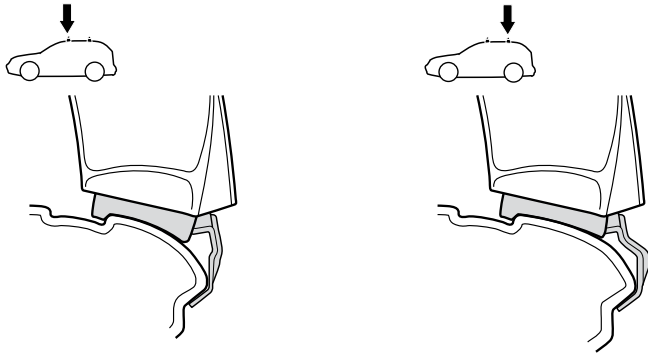
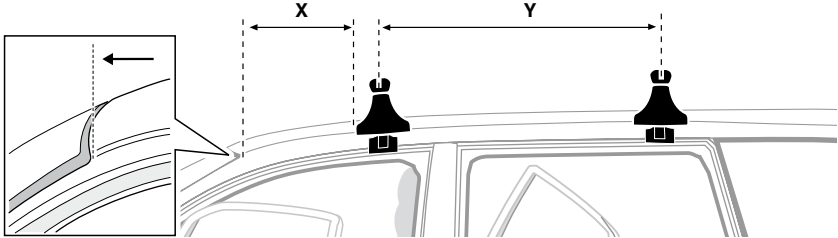
1077



5

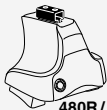


	X mm	Y mm	X inch	Y inch
SUZUKI Wagon R, 5-dr MPV, 08-	440 mm	700 mm	17 ³ / ₈ "	27 ¹ / ₂ "



- | | | | |
|--------------|---|------------|---|
| GB/US | Tighten alternately | CZ | Pokřetla bagázníka dokřečaj dokřečaj napřezemennie. |
| D | Die Schrauben abwechselnd anziehen | SK | Dotahujte striedavo |
| F | Serrer alternativement chaque côté | SLO | Privijajte izmenično. |
| NL | Afwisselend aan de linker- en de rechterkant aandraaien | HR | Naizmjenično zategnite |
| I | Alternare il serraggio delle viti | HU | Egymástól függetlenül szorítandó |
| E | Apretar alternativamente | GR | Σφιγγετε εναλλάξ |
| PT | Aperte alternadamente | TR | Dönüşümlü sıkın |
| S | Dra åt växelvis | 中文 | 交替拧紧 |
| FIN | Kierrä vuorotellen | 한국어 | 번갈아 가며 조이십시오. |
| EST | Pinguldage vaheldumisi | 日本語 | 交互に締め付けてください。 |
| LAT | Pievēlciēt pamišus | ไทย | ขันในแบบสลับ |
| LIT | Užsukinėkite pakaitomis | | |
| PL | Śruby dokręcaj naprzemiennie | | |
| RU | Затягивайте попеременно | | |

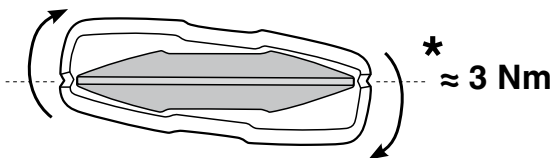
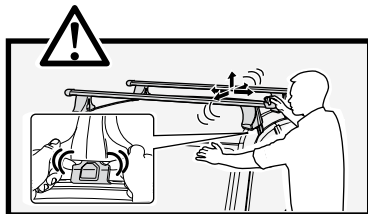
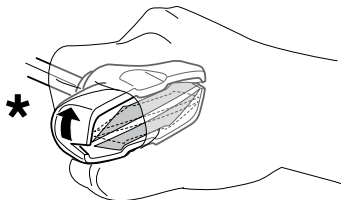
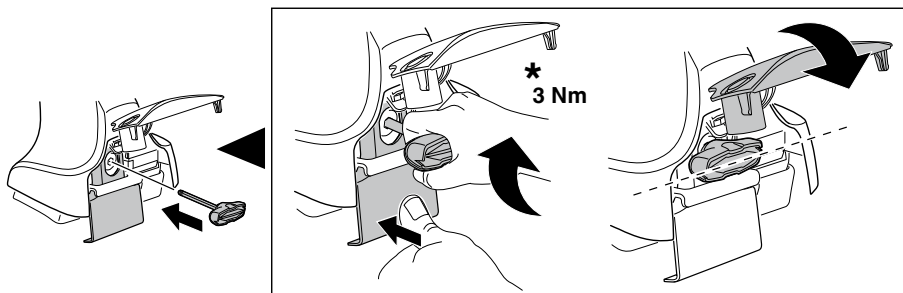
6



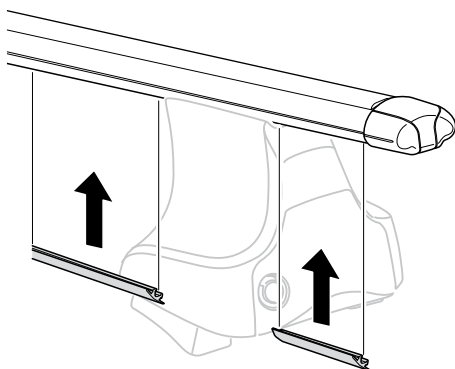
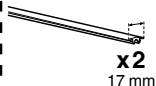
480R/754

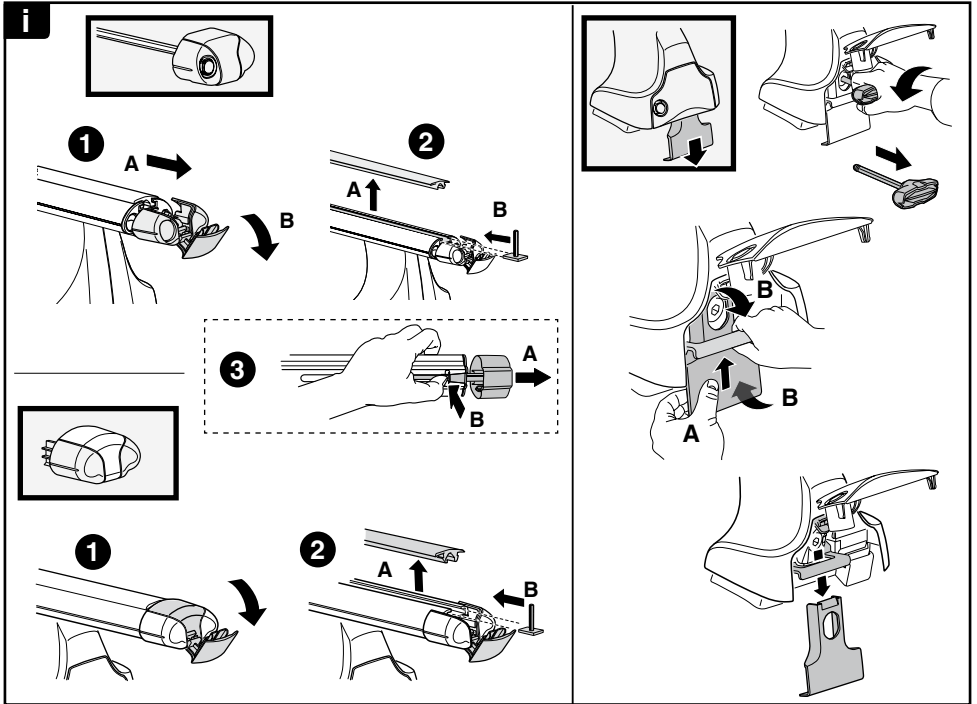
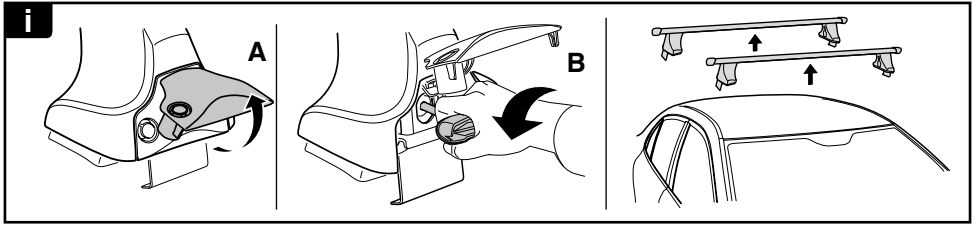


480



7





THULE
SWEDEN

**ONE
KEY
SYSTEM**

		(x4)
		(x6)
		(x8)
NA		(x10)
EUR		(x12)
ASIA		

WW ▶ Thule Sweden AB, Box 69, 330 33 Hillerstorp, SWEDEN
 NA ▶ Thule Inc., 42 Silvermine Road, Seymour, Connecticut 06483, USA

info@thule.com
 customer.service@thule.com

www.thule.com