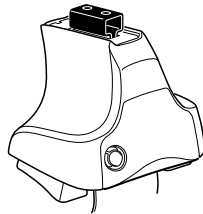


# Kit 1604

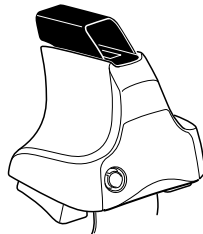
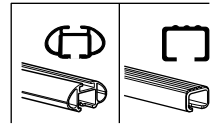
**CHRYSLER 300**, 4-dr Sedan, \*11-

**DODGE Charger**, 4-dr Sedan, \*11-

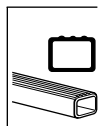
\*North America



**754** Rapid System  
**480R** Rapid Traverse (North America)



**480** Traverse (North America)



**Max.**  
**60 kg**  
**Max.**  
**132 lbs**

**THULE**  
**Kit XXXX**  
**instructions**  
**THULE**

**x1**

**x4**

**754 Rapid System**

**x4**

**480R Rapid Traverse (North America)**

**x4**

**754 Rapid System**  
**480R Rapid Traverse (North America)**

**x1**

**x4**

**x4**

**480 Traverse (North America)**

**x2**

**x2**  
 23 mm

**x2**

**x4**

**x4**

**x1**  
 17 mm

**x2**  
 23 mm

**x2**

**x2**

**x4**

**x2**

**x2**

**x2**

**x2**

**x2**

**x2**

**x2**

**x2**

**x2**

**x2**

**x2**

**(North America)**

**349 x2**

**120 x1**

**266 x1**

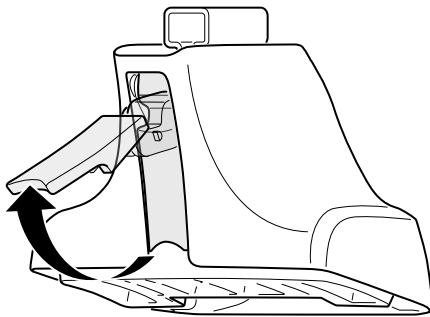
**666 x2**

**121 x1**

**267 x1**

**x1**

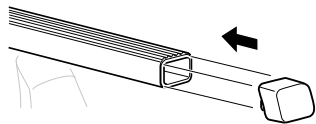
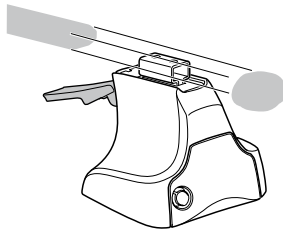
1



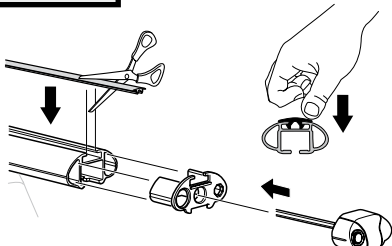
2



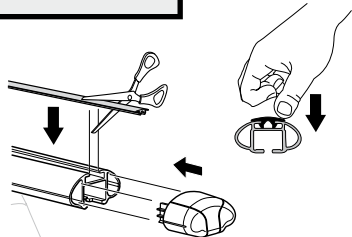
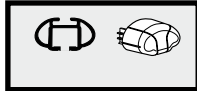
754 Rapid System  
480R Rapid Traverse  
(North America)



x4



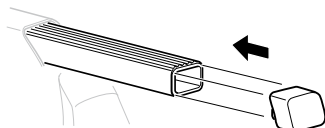
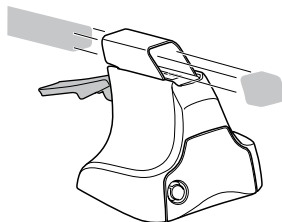
x4



x4

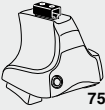


480 Traverse  
(North America)

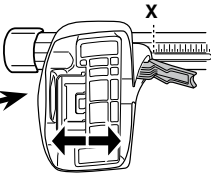


x4

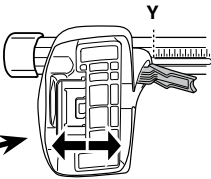
**3**



**754** Rapid System



	X
<b>CHRYSLER 300, 4-dr Sedan, *11-</b>	<b>46</b>
<b>DODGE Charger, 4-dr Sedan, *11-</b>	<b>46</b>



	Y
<b>CHRYSLER 300, 4-dr Sedan, *11-</b>	<b>46</b>
<b>DODGE Charger, 4-dr Sedan, *11-</b>	<b>46</b>

**3**



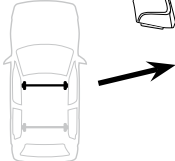
**480R** Rapid Traverse



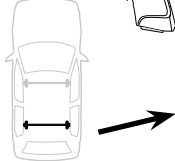
**480** Traverse



**(North America)**

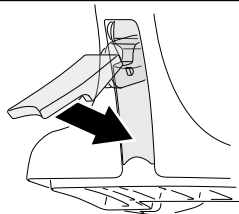


	X inch	X mm
<b>CHRYSLER 300, 4-dr Sedan, *11-</b>	<b>43 <sup>3</sup>/<sub>4</sub>"</b>	<b>1111 mm</b>
<b>DODGE Charger, 4-dr Sedan, *11-</b>	<b>43 <sup>3</sup>/<sub>4</sub>"</b>	<b>1111 mm</b>



	Y inch	Y mm
<b>CHRYSLER 300, 4-dr Sedan, *11-</b>	<b>43 <sup>7</sup>/<sub>8</sub>"</b>	<b>1111 mm</b>
<b>DODGE Charger, 4-dr Sedan, *11-</b>	<b>43 <sup>7</sup>/<sub>8</sub>"</b>	<b>1111 mm</b>

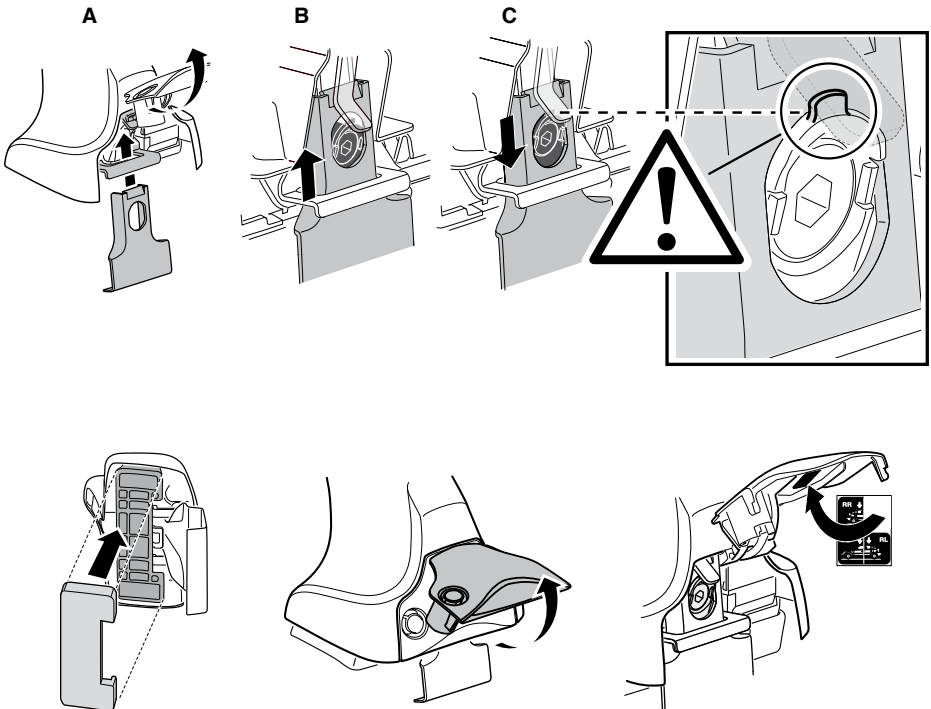
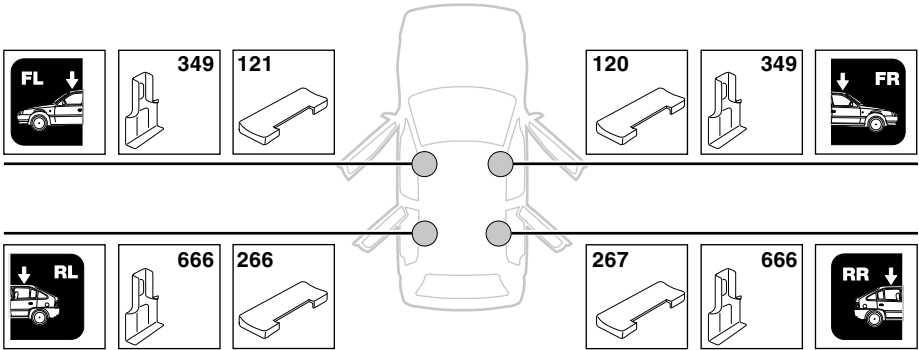
**4**



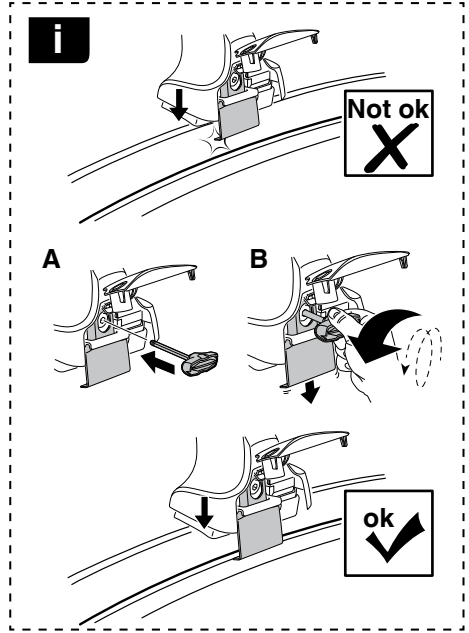
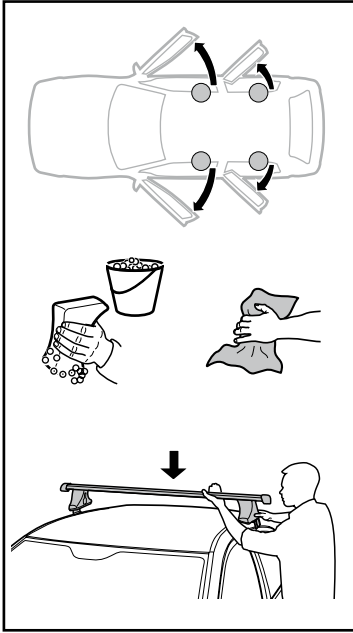
5

CHRYSLER 300, 4-dr Sedan, \*11-

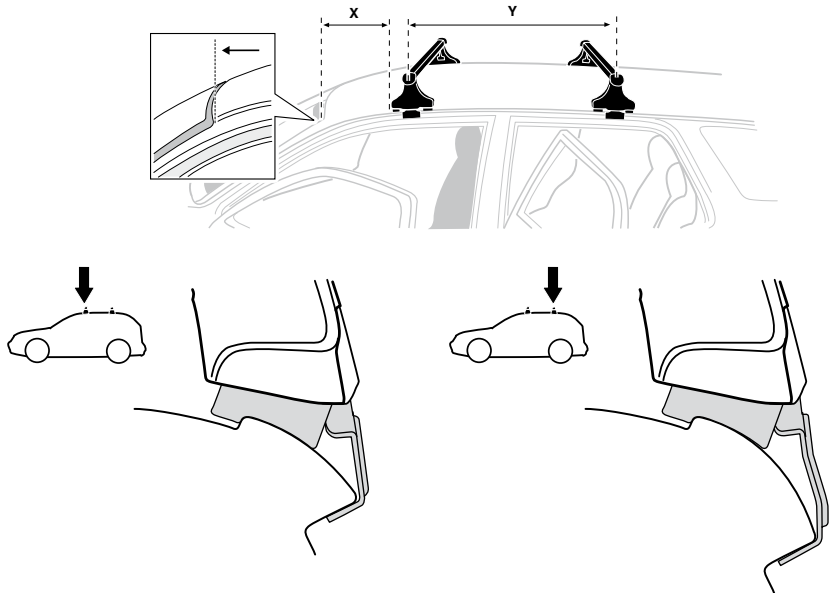
DODGE Charger, 4-dr Sedan, \*11-



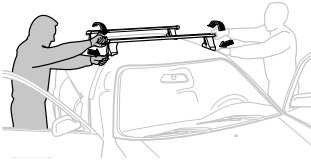
6



	X mm	Y mm	X inch	Y inch
CHRYSLER 300, 4-dr Sedan, *11-	210 mm	740 mm	8 1/4"	29"
DODGE Charger, 4-dr Sedan, *11-	210 mm	740 mm	8 1/4"	29"



7



**GB/US** Tighten alternately  
**D** Die Schrauben abwechselnd anziehen  
**F** Serrer alternativement chaque côté  
**NL** Afwisselend aan de linker- en de rechterkant aandraaien  
**I** Alternare il serraggio delle viti  
**E** Apertar alternativamente  
**PT** Aperte alternadamente  
**S** Dra åt växelvis  
**FIN** Kierrä vuorotellen  
**EST** Pinguldage vaheldumisi  
**LAT** Pievelciēt pamišus  
**LIT** Užsukinėkite pakaitomis  
**PL** Śruby dokręcaj naprzemiennie  
**RU** Затягивайте попеременно

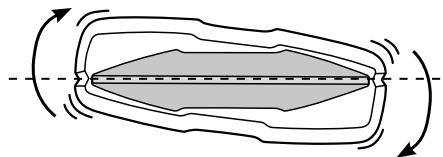
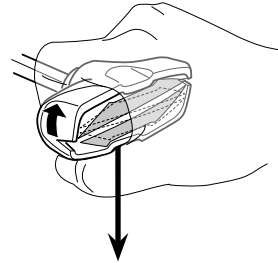
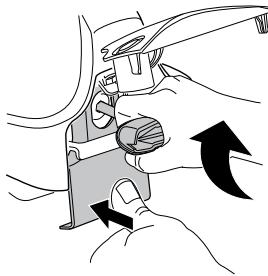
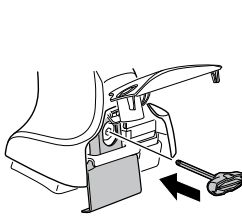
**CZ** Pokrétla bagażnika dokręcaj dokręcaj naprzemiennie.  
**SK** Doťahujte striedavo  
**SLO** Privijajte izmenično.  
**HR** Naizmjenično zategnite  
**HU** Egymástól függetlenül szorítandó  
**GR** Σφιγγεται εναλλάξ  
**TR** Dönüşümlü sıkın

**中文** 交替拧紧

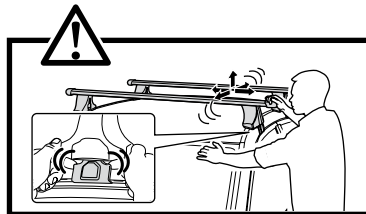
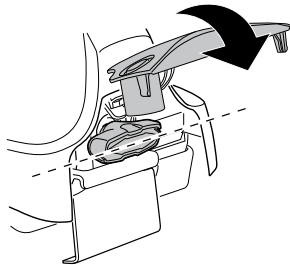
**한국어** 번갈아 가며 조이십시오.

**日本語** 交互に締め付けてください。

**ไทย** ชั้้นในแบบสลับ



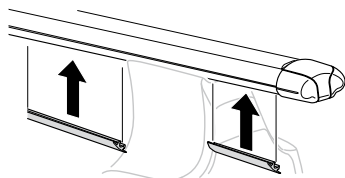
≈ 3 Nm

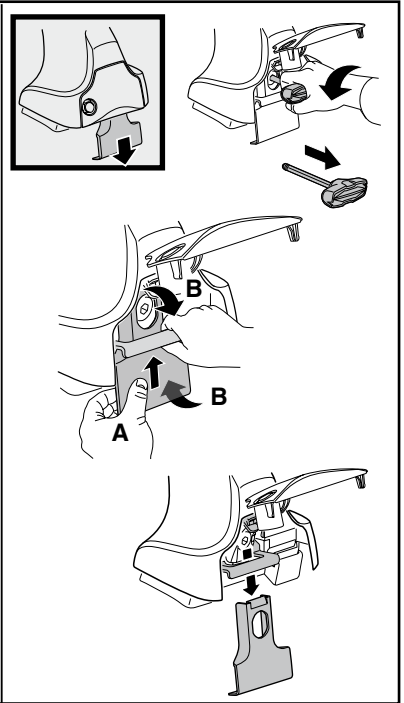
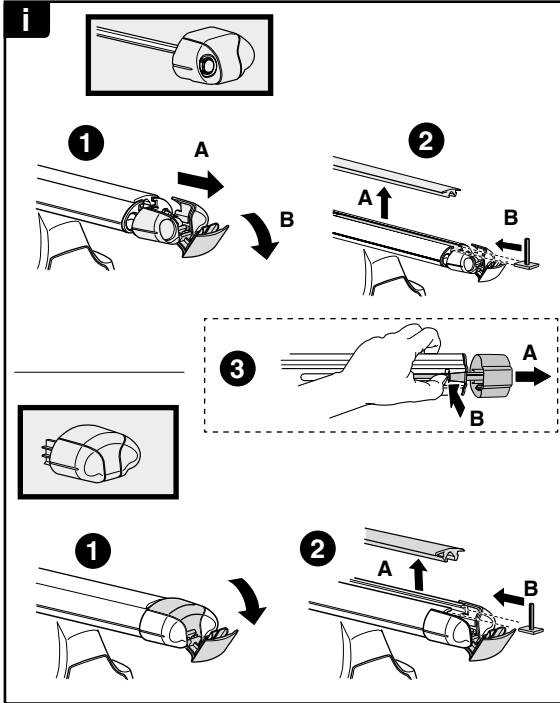


8

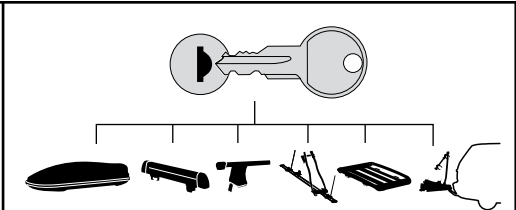


x1  
17 mm

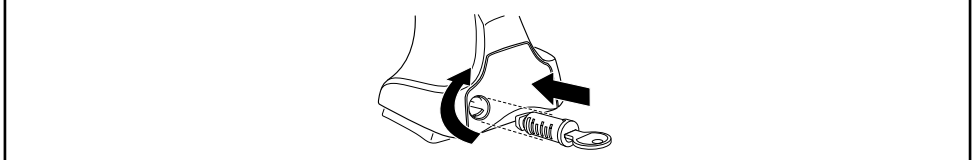




**THULE**  
SWEDEN  
**ONE  
KEY  
SYSTEM**



		(x4)
		(x6)
		(x8)
NA		(x10)
EUR		(x12)
ASIA		



WW ▶ Thule Sweden AB, Box 69, 330 33 Hillerstorp, SWEDEN  
NA ▶ Thule Inc., 42 Silvermine Road, Seymour, Connecticut 06483, USA

info@thule.com  
customer.service@thule.com

www.thule.com