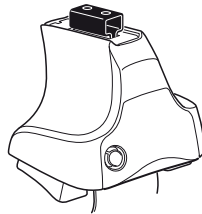


Kit 1627

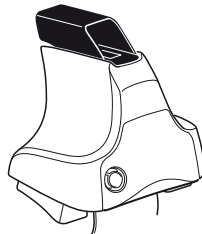
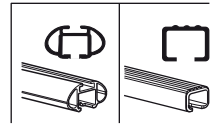
FORD Focus, 4-dr Sedan, 12–

FORD Focus, 5-dr Hatchback, 12–

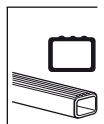
For cars without mounting holes in the door frame



754 Rapid System
480R Rapid Traverse (North America)

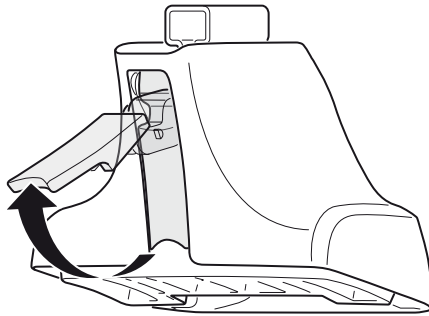


480 Traverse (North America)



(North America)

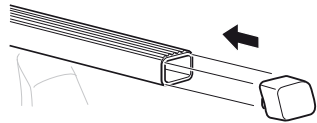
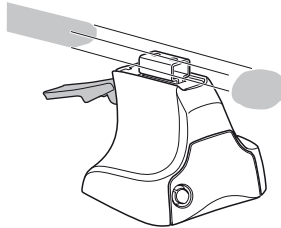
1



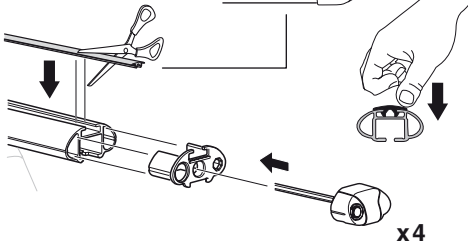
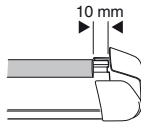
2



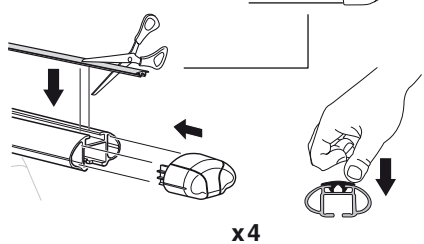
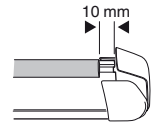
754 Rapid System
480R Rapid Traverse
(North America)



x4



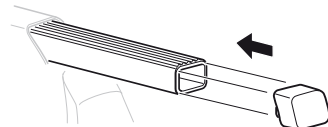
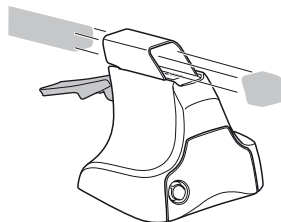
x4



x4

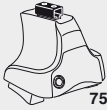


480 Traverse
(North America)

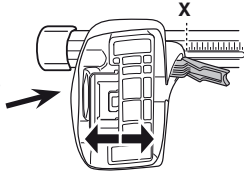


x4

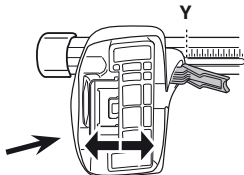
3



754 Rapid System



	X
FORD Focus, 4-dr Sedan, 12-	40
FORD Focus, 5-dr Hatchback, 12-	40



	Y
FORD Focus, 4-dr Sedan, 12-	36
FORD Focus, 5-dr Hatchback, 12-	36

3

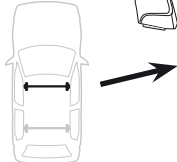


480R Rapid Traverse

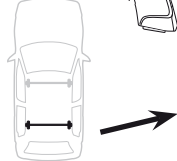


480 Traverse

(North America)

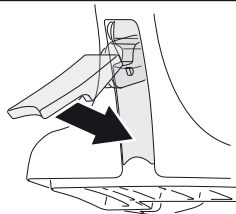


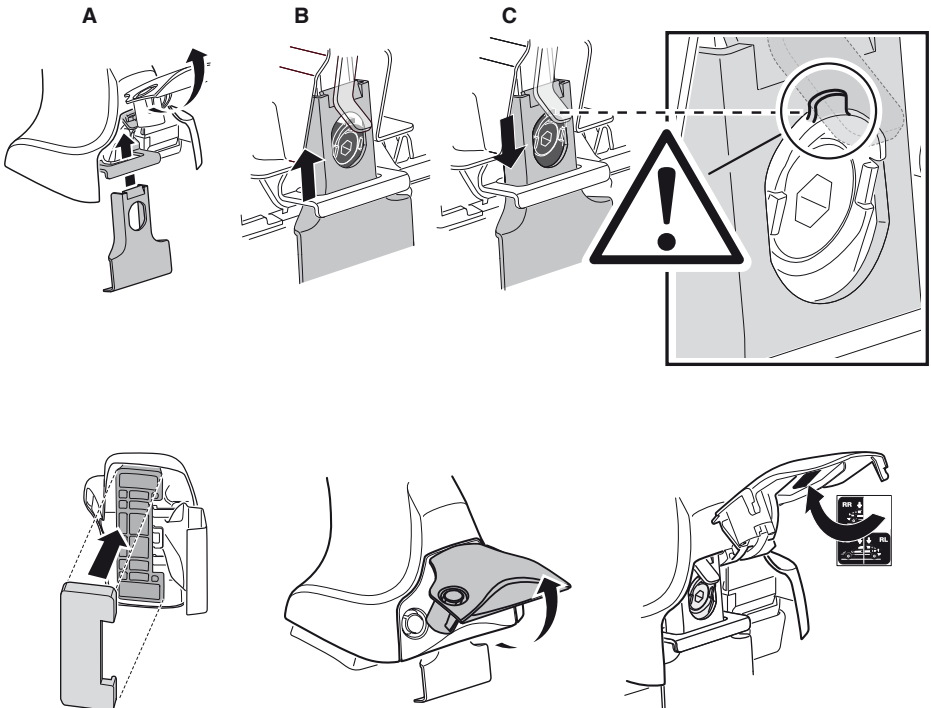
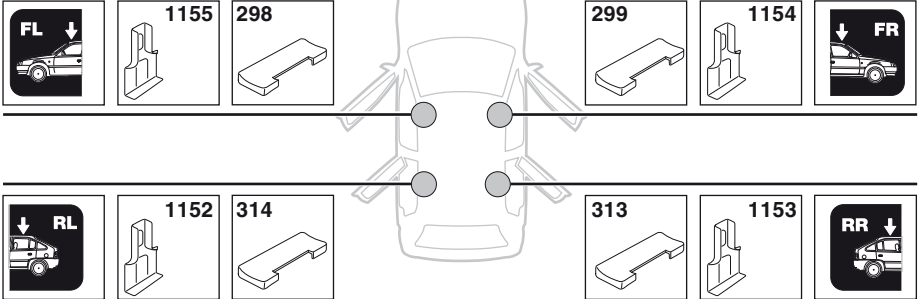
	X inch	X mm
FORD Focus, 4-dr Sedan, 12-	41 ³/₈"	1051 mm
FORD Focus, 5-dr Hatchback, 12-	41 ³/₈"	1051 mm



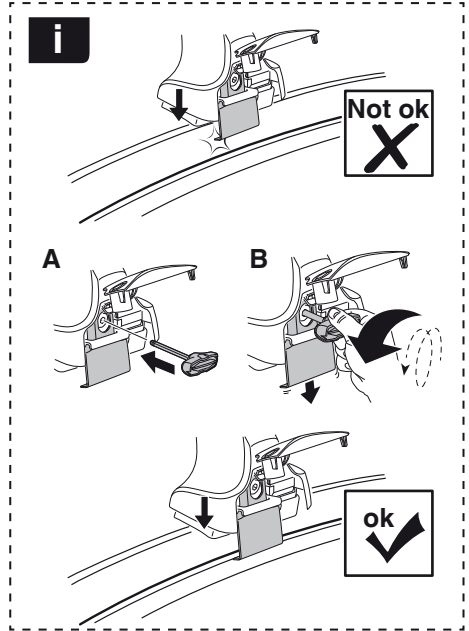
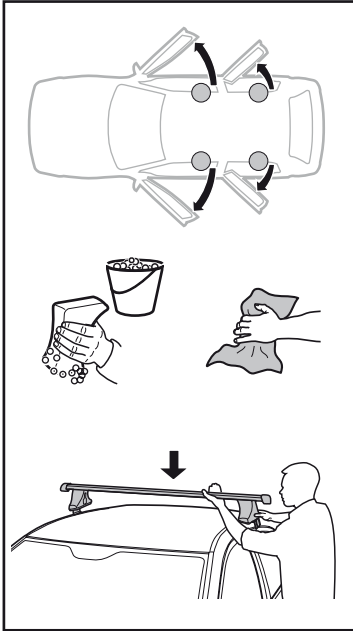
	Y inch	Y mm
FORD Focus, 4-dr Sedan, 12-	39 ³/₄"	1011 mm
FORD Focus, 5-dr Hatchback, 12-	39 ³/₄"	1011 mm

4

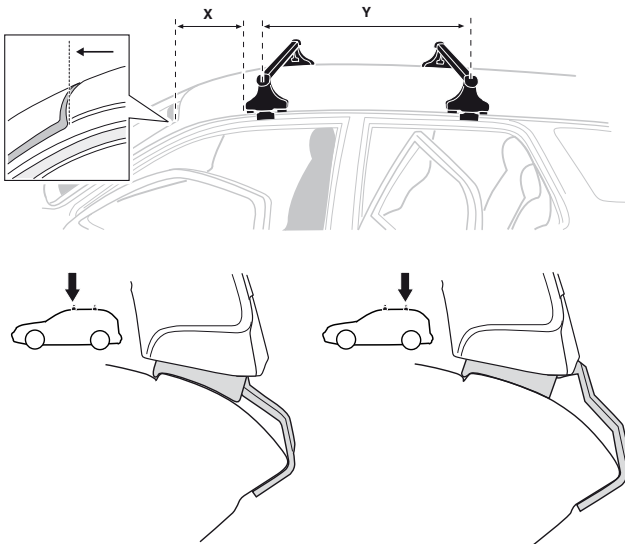


5**FORD Focus, 4-dr Sedan, 12-
FORD Focus, 5-dr Hatchback, 12-**

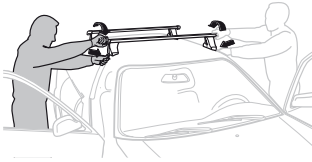
6



	X mm	Y mm	X inch	Y inch
FORD Focus, 4-dr Sedan, 12-	241 mm	622 mm	9 1/2"	24 1/2"
FORD Focus, 5-dr Hatchback, 12-	254 mm	686 mm	10"	27"



7



GB/US Tighten alternately
 D Die Schrauben abwechselnd anziehen
 F Serrer alternativement chaque côté
 NL Afwisselend aan de linker- en de rechterkant aandraaien
 I Alternare il serraggio delle viti
 E Apretar alternativamente
 PT Aperte alternadamente
 S Dra åt växelvis
 FIN Kierrä vuorotellen
 EST Pinguldage vaheldumisi
 LAT Pieļieciet pamišus
 LIT Užsukinėkite pakaitomis
 PL Śruby dokręcaj naprzemiennie
 RU Затягивайте попеременно

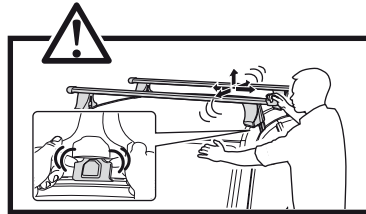
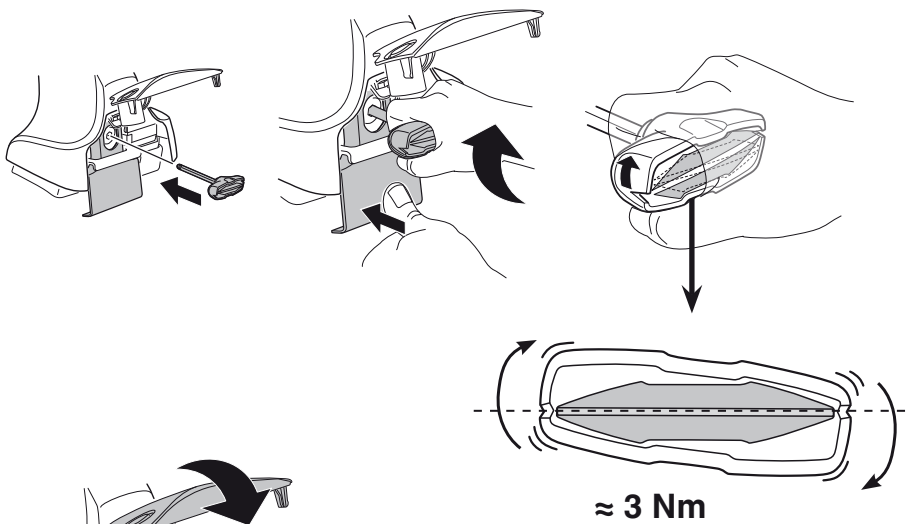
CZ Pokręťta bagażnika dokręcaj dokręcaj naprzemiennie.
 SK Dofahajte striedavo
 SLO Privijajte izmenično.
 HR Naizmjerno zategnite
 HU Egymástól függetlenül szorítandó
 GR Σφιγίγες εναλλάξ
 TR Dönüşümlü sıkın

中文 交替拧紧

한국어 번갈아 가며 조이십시오.

日本語 交互に締め付けてください。

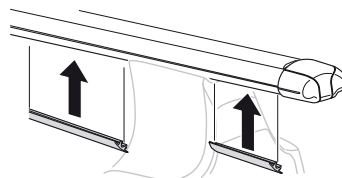
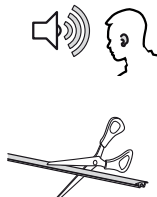
ไทย ชันในแบบสลับ

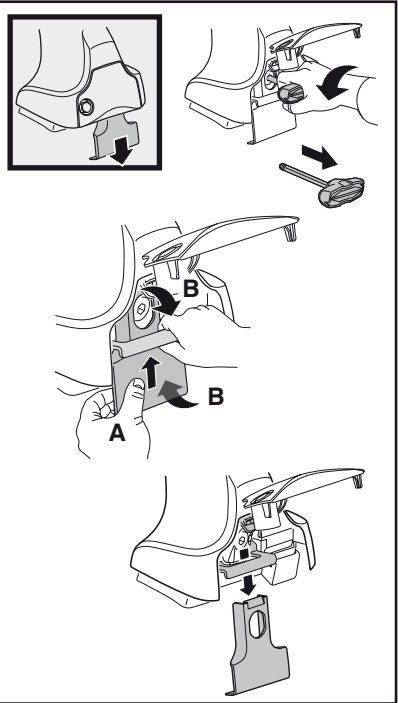
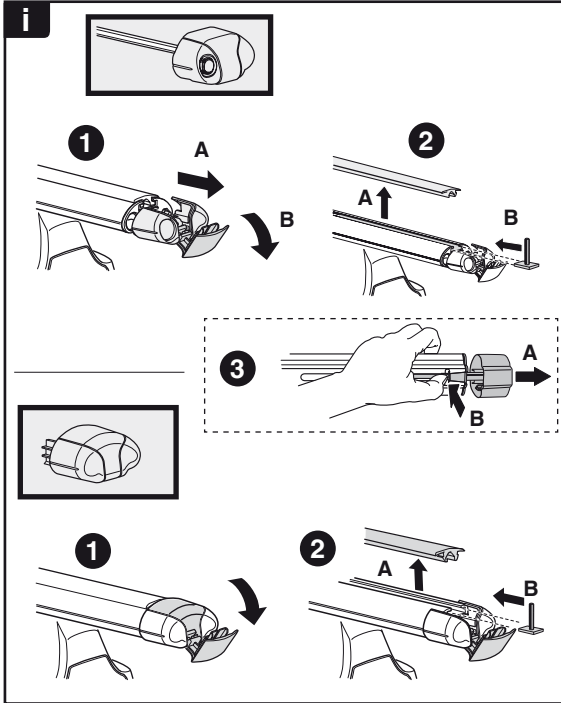
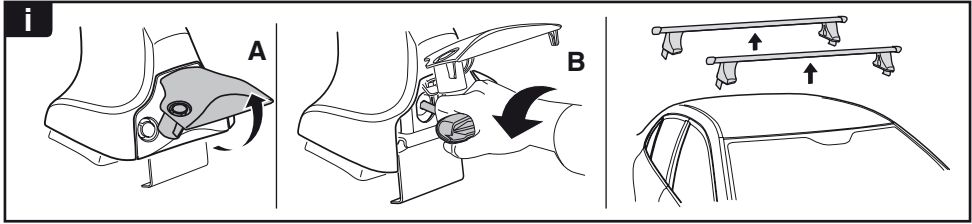


8

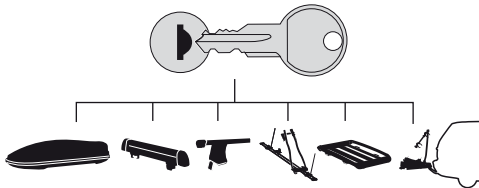


x1
17 mm

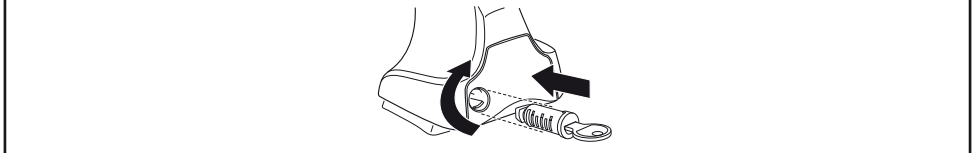




THULE
SWEDEN
**ONE
KEY
SYSTEM**



- 544** (x4)
- 596** (x6)
- 588** (x8)
- NA **510** (x10)
- EUR **452** (x12)
- ASIA



WW ▶ Thule Sweden AB, Box 69, 330 33 Hillerstorp, SWEDEN
NA ▶ Thule Inc., 42 Silvermine Road, Seymour, Connecticut 06483, USA

info@thule.com
customer.service@thule.com

www.thule.com