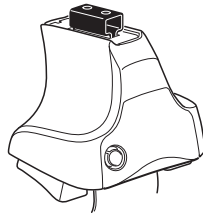


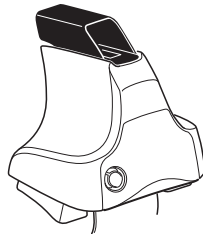
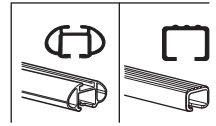
Kit 1658

DODGE Journey, 5-dr SUV, 12- / *13- (Without railing)
FIAT Freemont, 5-dr SUV, 12- (Without railing)

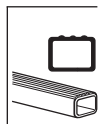
*North America



754 Rapid System
480R Rapid Traverse (North America)



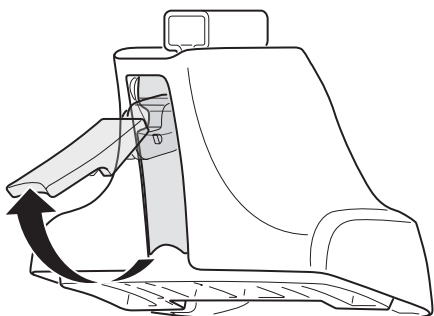
480 Traverse (North America)



754 Rapid System
480R Rapid Traverse (North America)

480 Traverse (North America)

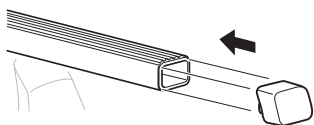
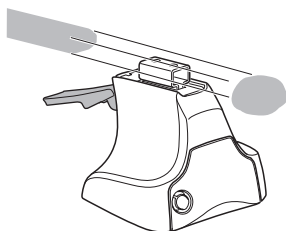
1



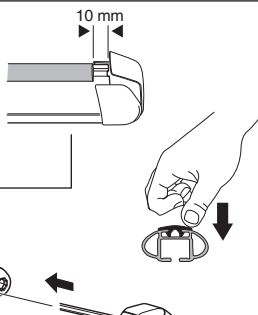
2



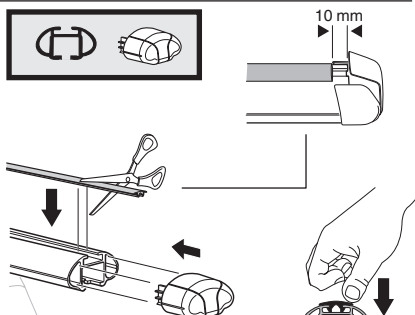
754 Rapid System
480R Rapid Traverse
(North America)



x4



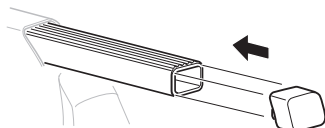
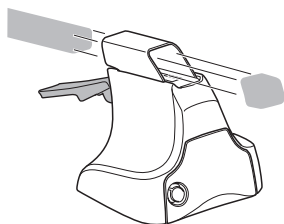
x4



x4

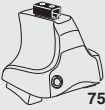


480 Traverse
(North America)

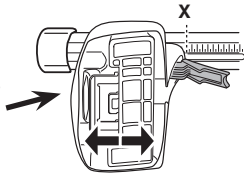


x4

3

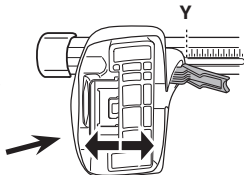


754 Rapid System



X

DODGE Journey, 5-dr SUV, 12- / *13- (Without railing)	53
FIAT Freemont, 5-dr SUV, 12- (Without railing)	53



Y

DODGE Journey, 5-dr SUV, 12- / *13- (Without railing)	49,5
FIAT Freemont, 5-dr SUV, 12- (Without railing)	49,5

3



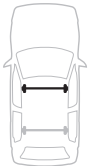
480R Rapid Traverse



480 Traverse



(North America)



X inch X mm

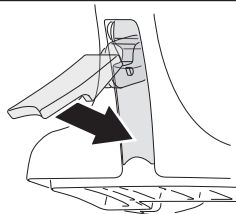
DODGE Journey, 5-dr SUV, 12- / *13- (Without railing)	46 1/2"	1181 mm
FIAT Freemont, 5-dr SUV, 12- (Without railing)	46 1/2"	1181 mm



Y inch Y mm

DODGE Journey, 5-dr SUV, 12- / *13- (Without railing)	45 1/8"	1146 mm
FIAT Freemont, 5-dr SUV, 12- (Without railing)	45 1/8"	1146 mm

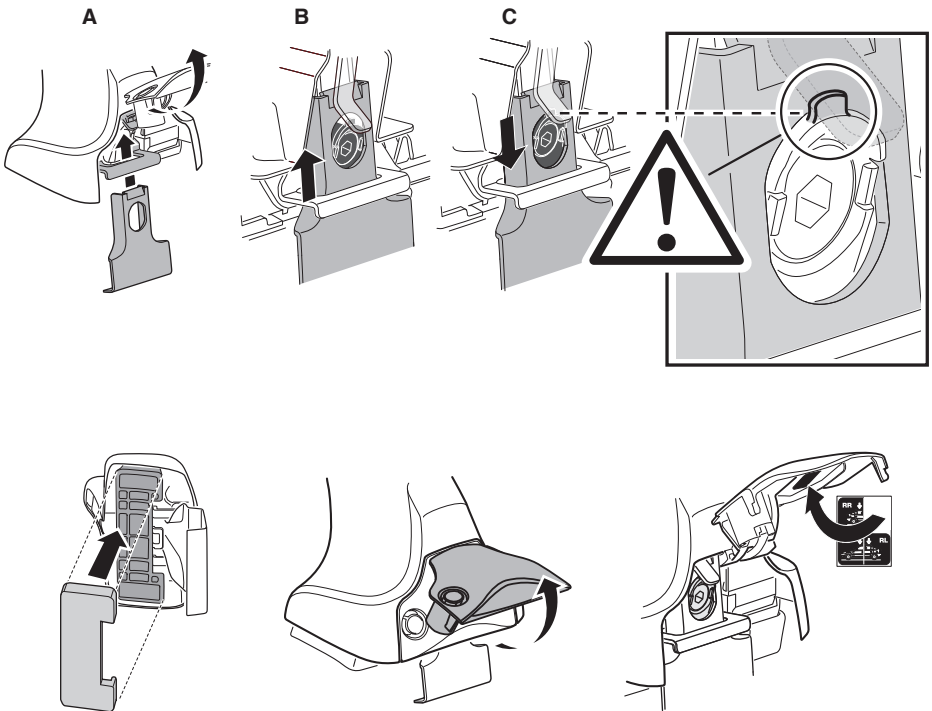
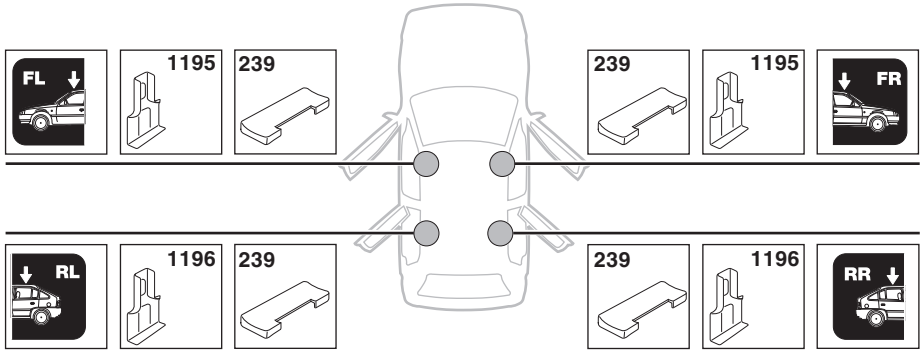
4



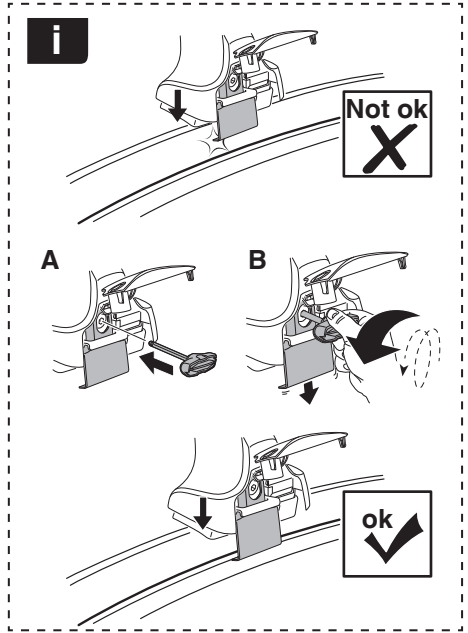
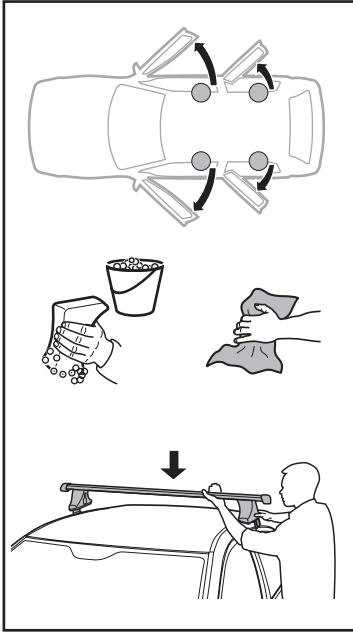
5

DODGE Journey, 5-dr SUV, 12- / *13- (Without railing)

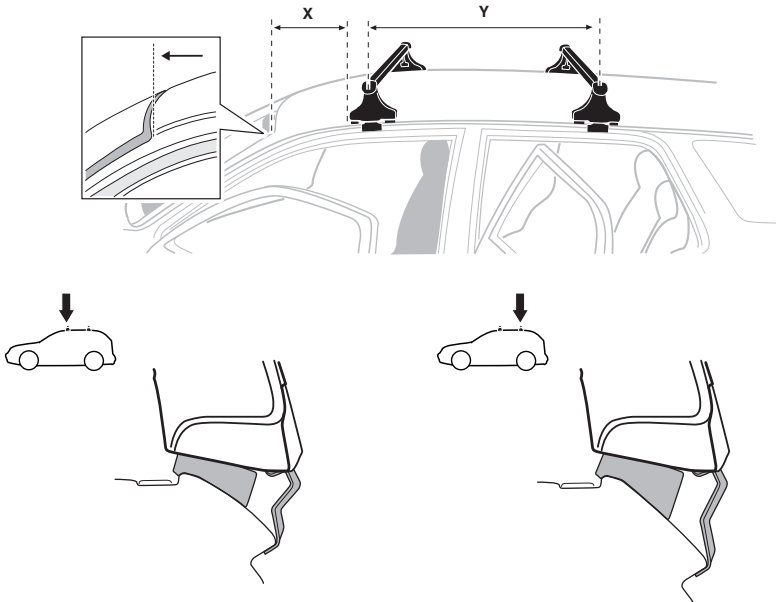
FIAT Freemont, 5-dr SUV, 12- (Without railing)



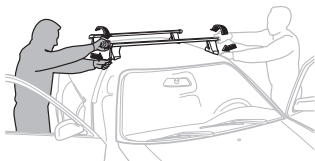
6



	X mm	Y mm	X inch	Y inch
DODGE Journey, 5-dr SUV, 12- / *13- (Without railing)	438 mm	711 mm	17 1/4"	28"
FIAT Freemont, 5-dr SUV, 12- (Without railing)	438 mm	711 mm	17 1/4"	28"



7

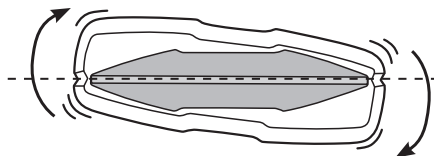
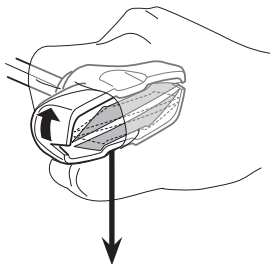
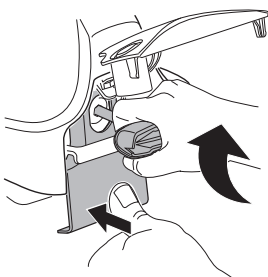
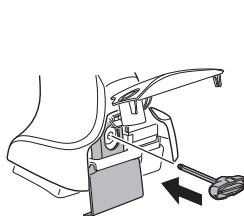


- EN Tighten alternately
- DE Die Schrauben abwechselnd anziehen
- FR Serrer alternativement chaque côté
- NL Afwisselend aan de linker- en de rechterkant aandraaien
- IT Alternare il serraggio delle viti
- ES Apretar alternativamente
- PT Aperte alternadamente
- SV Dra åt växelvis
- DK Spænd skiftevis
- NE Trekk til vekselvis
- FI Kierrä vuorotellen
- ET Pinguldage vaheldumisi
- LV Pievelciet pamišus
- LT Užsukinėkite pakaitomis
- PL Śruby dokręcaj naprzemiennie

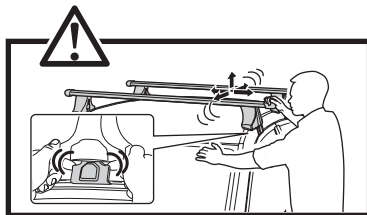
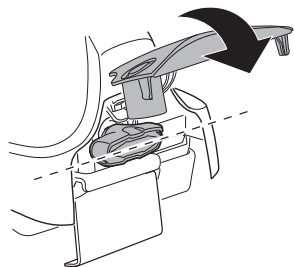
- RU Затягивайте попеременно
- UK Затягти по чергово
- BG Затегнете последователно
- CS Pokręťta багаžníka dokręcaj dokręcaj naprzemiennie.
- SK Dofahujte striedavo
- SL Privijajte izmenično.
- HR/BIH Naizmjenično zategnite
- HU Egymástól függetlenül szorítandó
- EL Σφίγγετε εναλλάξ
- TR Dönüşümlü sıkın

إحكام الربط بالتناوب
הקטן לסיבובן

- ZH 交替拧紧
- JA 自動固定
- KO 번갈아 조이기
- TH ชั่งน้ำหนักสลับ



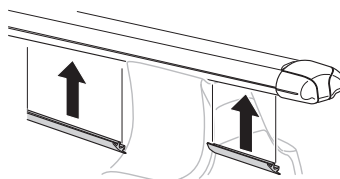
≈ 3 Nm

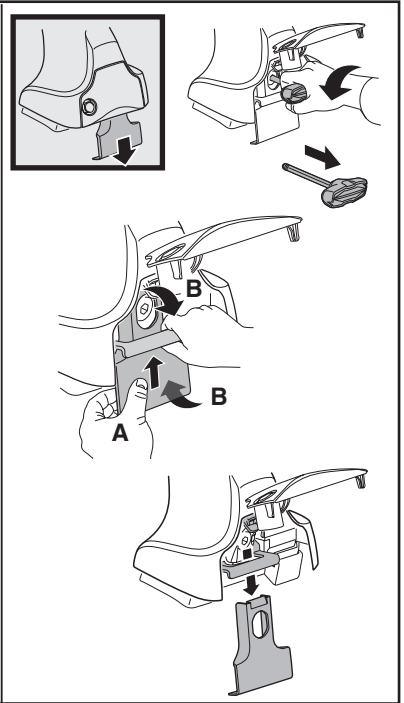
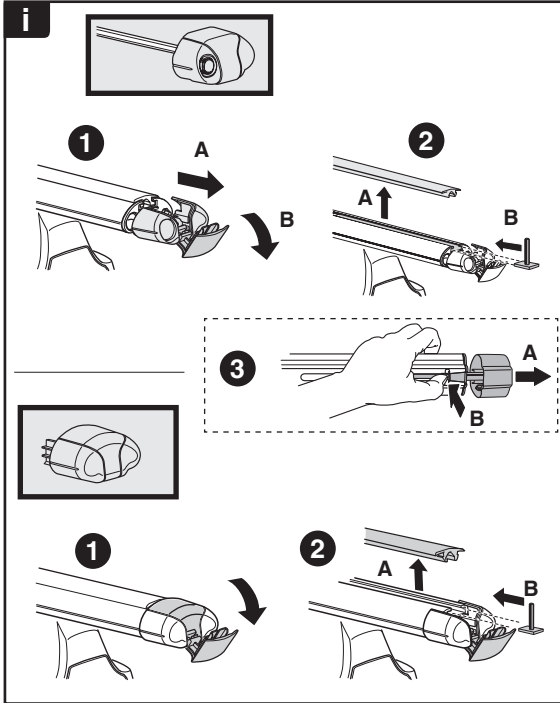
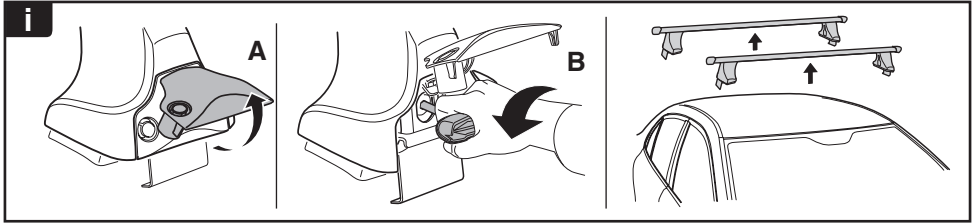


8



x1
17 mm





THULE
SWEDEN
**ONE
KEY
SYSTEM**



		(x4)
		(x6)
		(x8)
NA		(x10)
EUR		(x12)
ASIA		



WW ▶ Thule Sweden AB, Box 69, 330 33 Hillerstorp, SWEDEN
NA ▶ Thule Inc., 42 Silvermine Road, Seymour, Connecticut 06483, USA

info@thule.com
customer.service@thule.com

www.thule.com