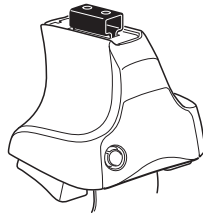
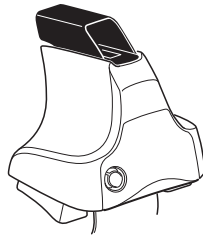
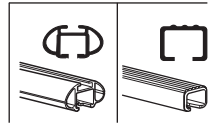


Kit 1681

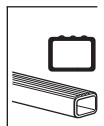
MINI Cooper, 3-dr Hatchback, 02-06, 07-



754 Rapid System
480R Rapid Traverse (North America)



480 Traverse (North America)

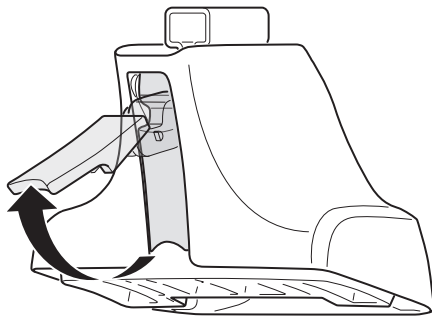


- 754 Rapid System: x1 (box), x4 (ruler), x4 (480R Rapid Traverse), x4 (screwdriver)
- 480R Rapid Traverse (North America): x1 (ruler), x4 (480 Traverse), x4 (screwdriver)

- (North America): x2 (rod), x2 (rod), x2 (rod), x4 (nut), x4 (nut), x1 (rod), x2 (rod), x2 (rod), x2 (rod), x2 (rod), x2 (rod), x2 (rod), x2 (rod), x2 (rod)

- 1240 x4 (bracket)
- 182 x4 (bracket)
- 52269 x1 (screw)
- 52306 x4 (rod)
- Diagram with labels: RR, FR, FL, RL, x1 (diagram)

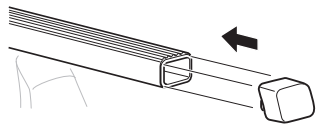
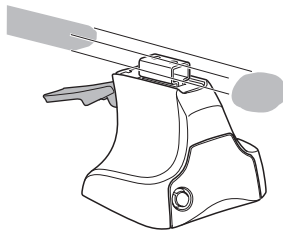
1



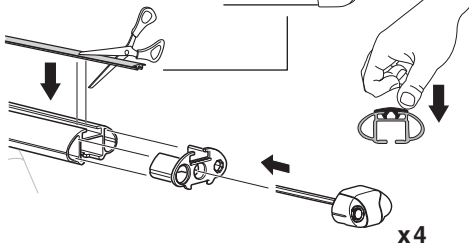
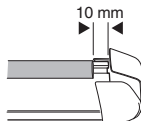
2



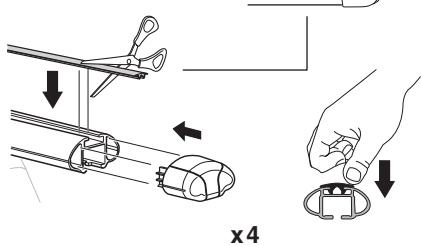
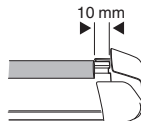
754 Rapid System
480R Rapid Traverse
(North America)



x4



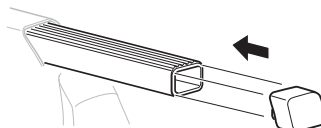
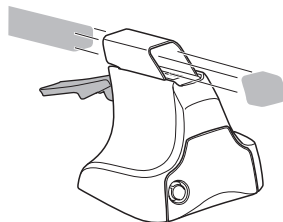
x4



x4

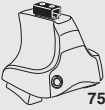


480 Traverse
(North America)

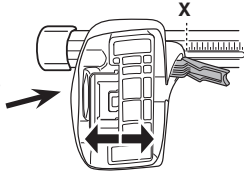


x4

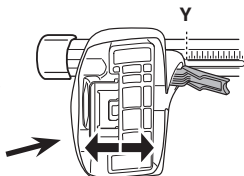
3



754 Rapid System



	X
MINI Cooper, 3-dr Hatchback, 02-06, 07-	31



	Y
MINI Cooper, 3-dr Hatchback, 02-06, 07-	31

3



480R Rapid Traverse



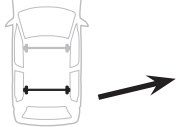
480 Traverse



(North America)

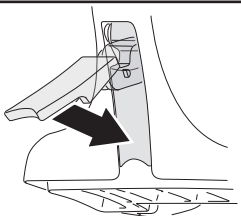


	X inch	X mm
MINI Cooper, 3-dr Hatchback, 02-06, 07-	37 ⁷/₈"	961 mm



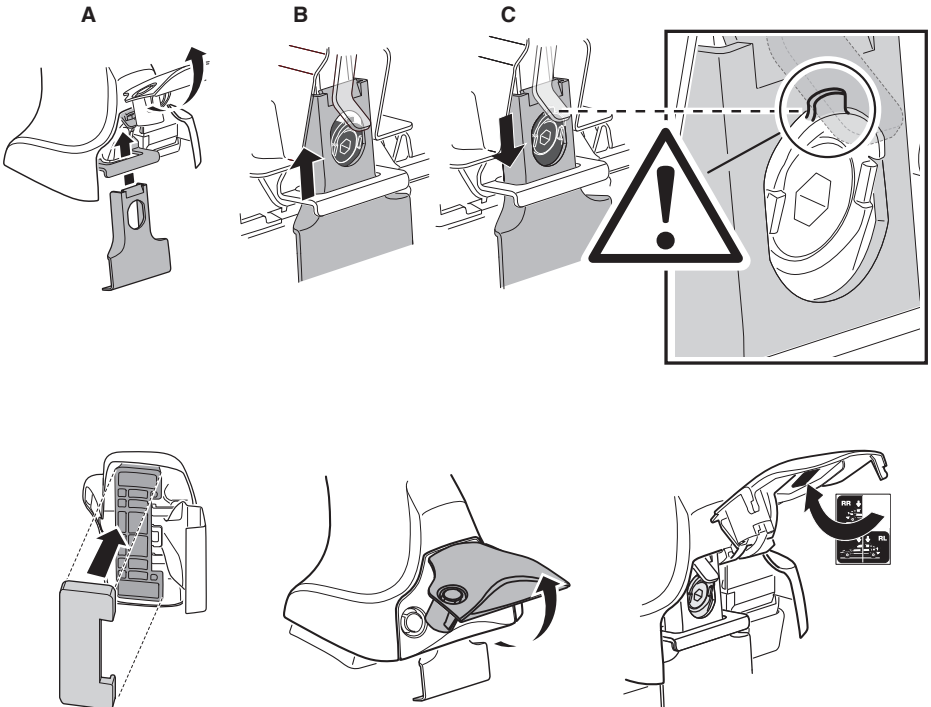
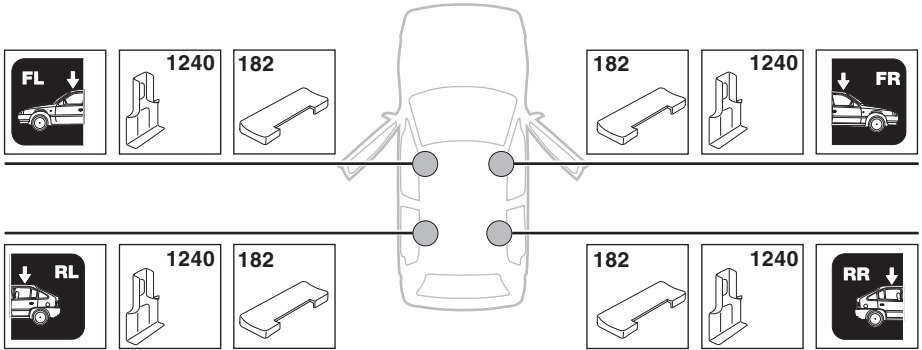
	Y inch	Y mm
MINI Cooper, 3-dr Hatchback, 02-06, 07-	37 ⁷/₈"	961 mm

4



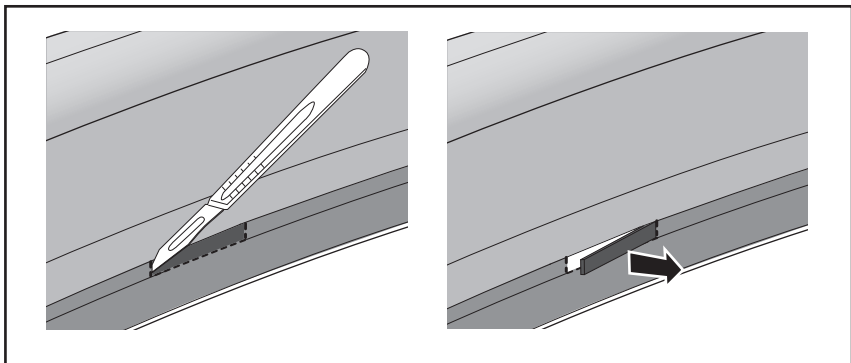
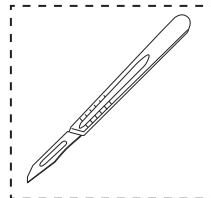
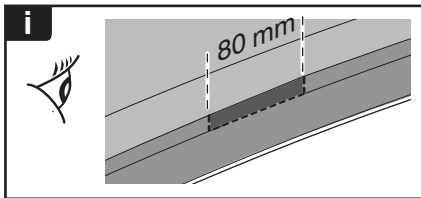
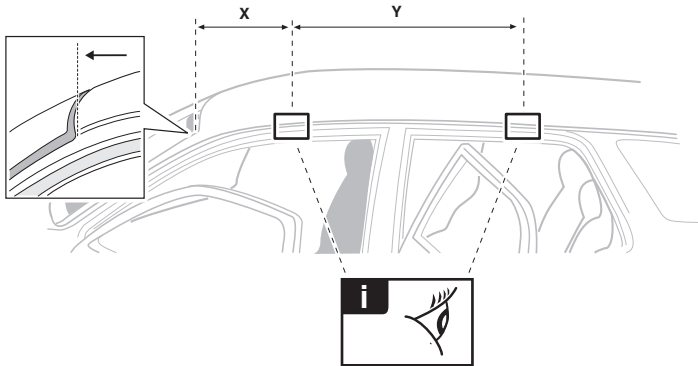
5

MINI Cooper, 3-dr Hatchback, 02-06, 07-

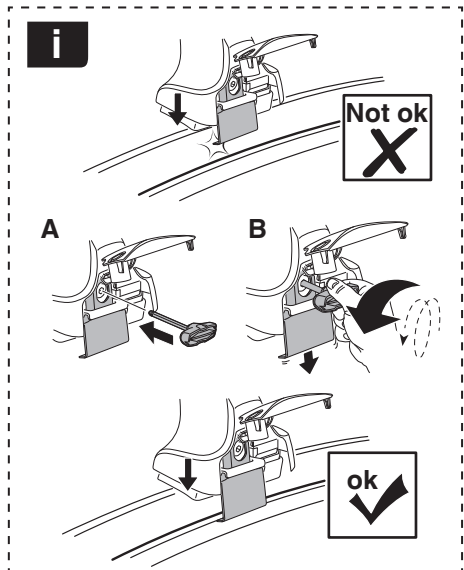
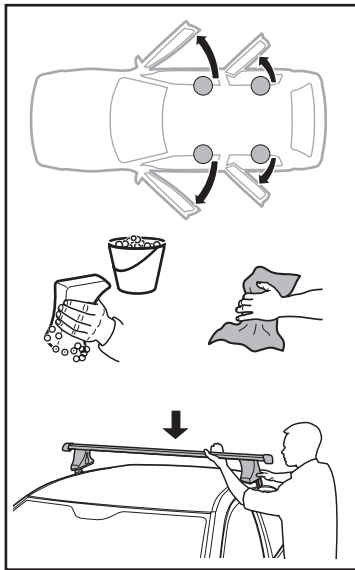


6

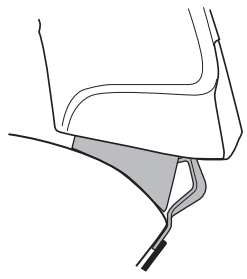
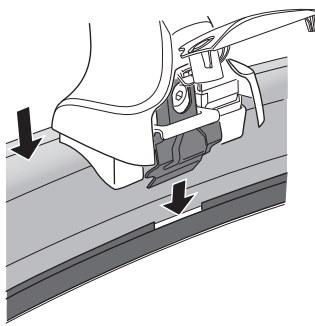
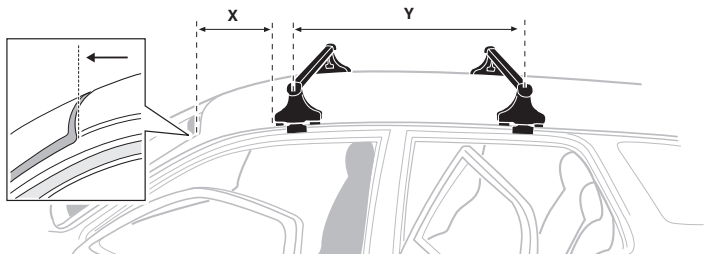
	X mm	Y mm	X inch	Y inch
MINI Cooper, 3-dr Hatchback, 02-06, 07-	400 mm	680 mm	15 3/4"	26 3/4"



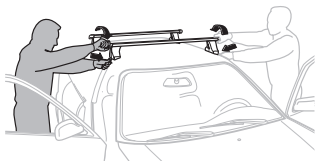
7



	X mm	Y mm	X inch	Y inch
MINI Cooper, 3-dr Hatchback, 02-06, 07-	330 mm	680 mm	13"	26 3/4"



8

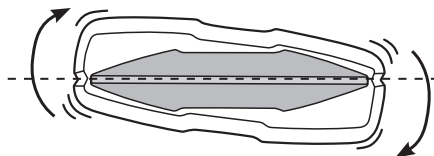
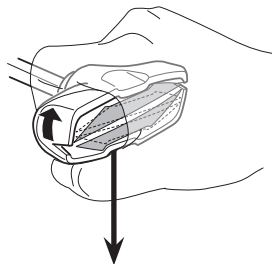
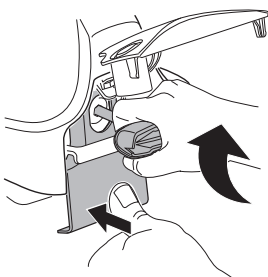
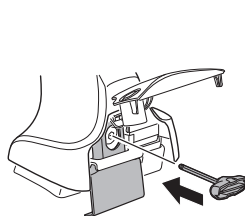


- EN Tighten alternately
- DE Die Schrauben abwechselnd anziehen
- FR Serrer alternativement chaque côté
- NL Afwisselend aan de linker- en de rechterkant aandraaien
- IT Alternare il serraggio delle viti
- ES Apretar alternativamente
- PT Aperte alternadamente
- SV Dra åt växelvis
- DK Spænd skiftevis
- NE Trekk til vekselvis
- FI Kierrä vuorotellen
- ET Pinguldage vaheldumisi
- LV Pievelciet pamišus
- LT Užsukinėkite pakaitomis
- PL Śruby dokręcaj naprzemiennie

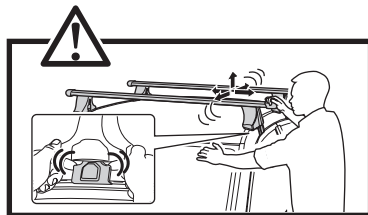
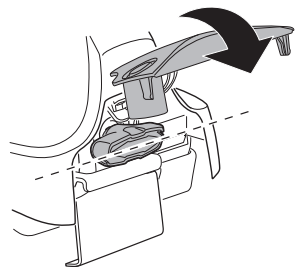
- RU Затягивайте попеременно
- UK Затягти по чергово
- BG Затегнете последователно
- CS Pokręťta багаžníka dokręcaj dokręcaj naprzemiennie.
- SK Dotiahujte striedavo
- SL Privijajte izmenično.
- HR/BIH Naizmjenično zategnite
- HU Egymástól függetlenül szorítandó
- EL Σφίγγετε εναλλάξ
- TR Dönüşümlü sıkın

إحكام الربط بالتناوب
התקן לסיבוב HE

- ZH 交替拧紧
- JA 自動固定
- KO 번갈아 조이기
- TH ชั่งน้ำหนักสลับ



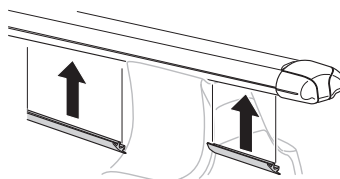
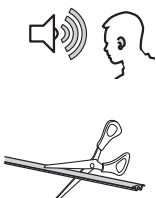
≈ 3 Nm

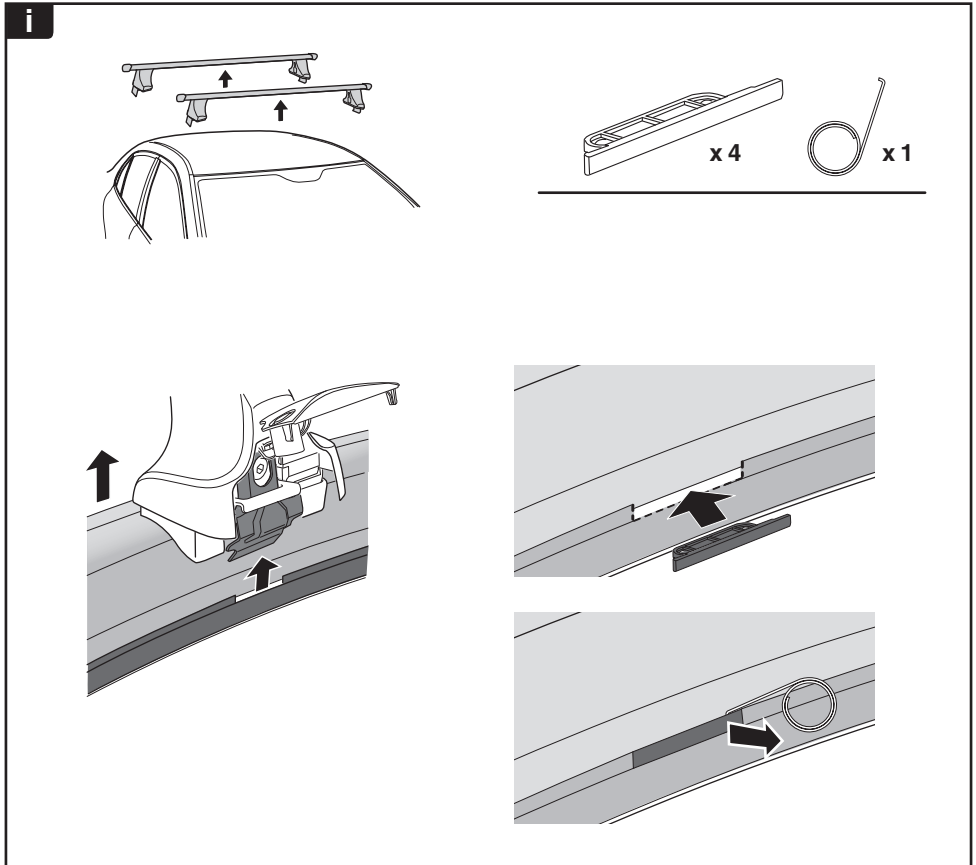
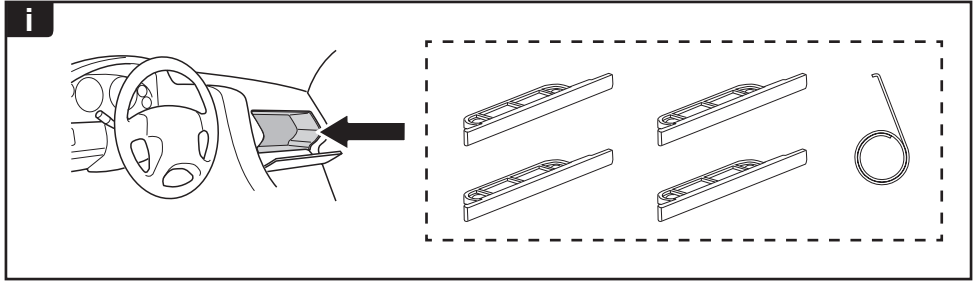


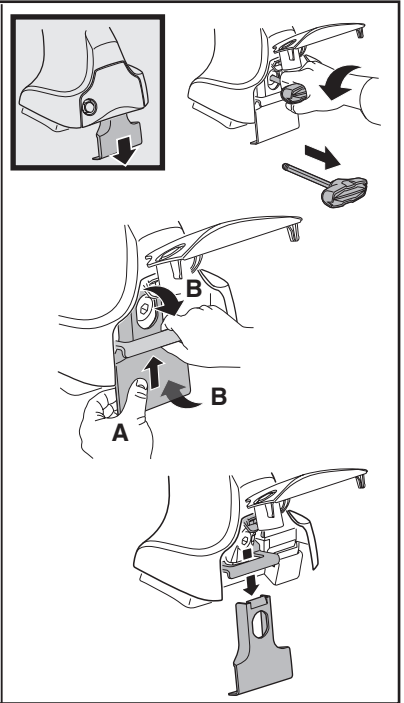
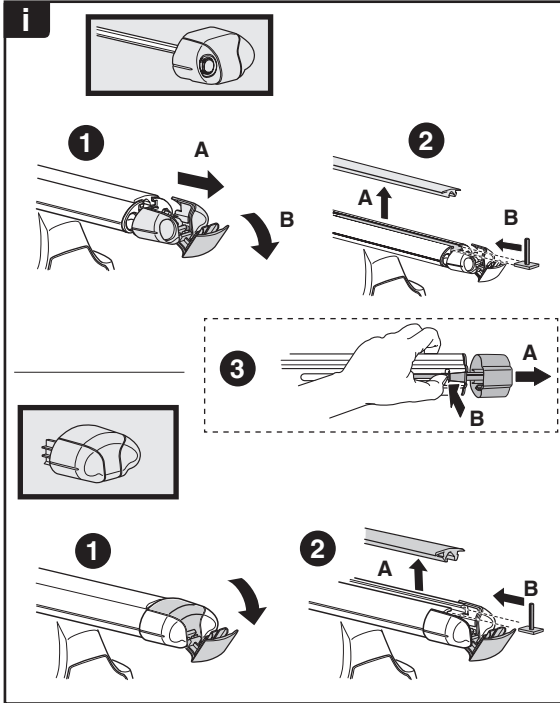
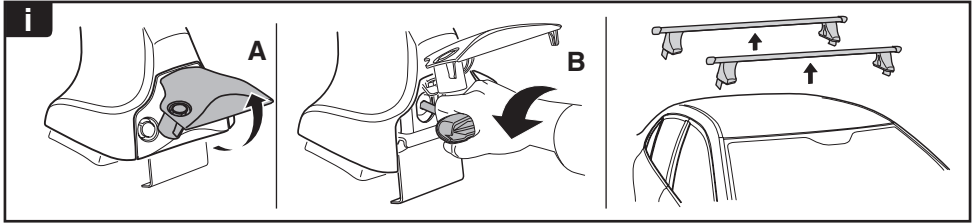
9



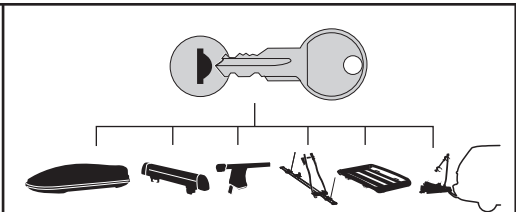
x1
17 mm



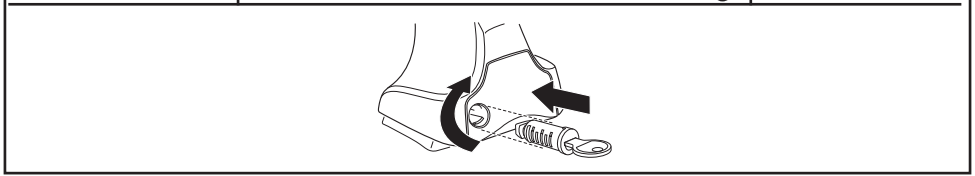




THULE
SWEDEN
**ONE
KEY
SYSTEM**



- 544** (x4)
 - 596** (x6)
 - 588** (x8)
 - 510** (x10)
 - 452** (x12)
- NA
EUR
ASIA



WW ▶ Thule Sweden AB, Box 69, 330 33 Hillerstorp, SWEDEN
NA ▶ Thule Inc., 42 Silvermine Road, Seymour, Connecticut 06483, USA

info@thule.com
customer.service@thule.com

www.thule.com