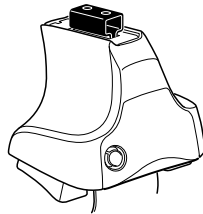
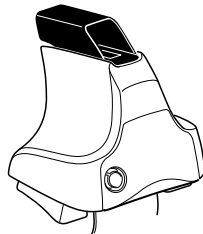
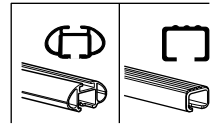


Kit 1682

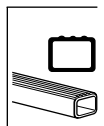
CITROËN C-Zero, 5-dr Hatchback, 10–
MITSUBISHI i-MiEV, 5-dr Hatchback, 10– / *12–
*North America



754 Rapid System
480R Rapid Traverse (North America)



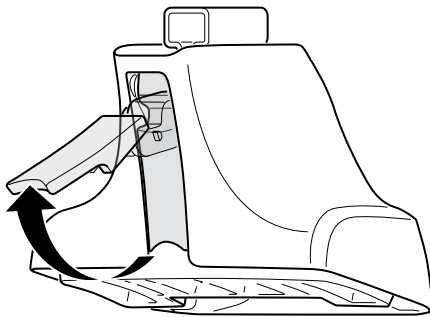
480 Traverse (North America)



754 Rapid System
480R Rapid Traverse (North America)

480 Traverse (North America)

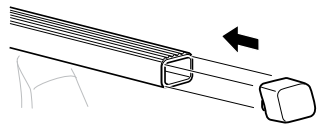
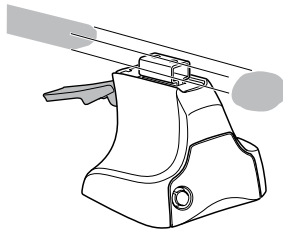
1



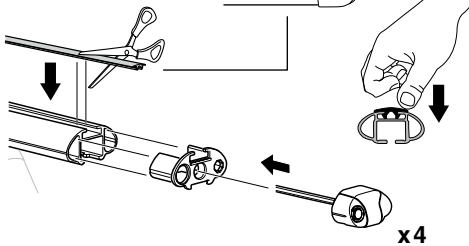
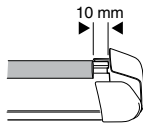
2



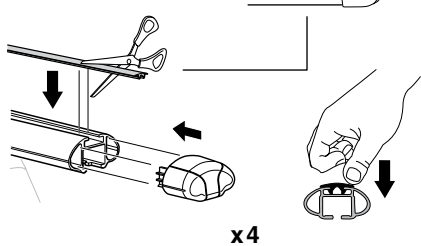
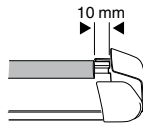
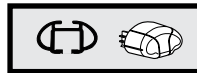
754 Rapid System
480R Rapid Traverse
(North America)



x4



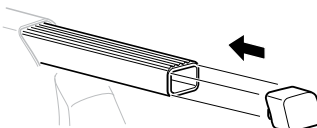
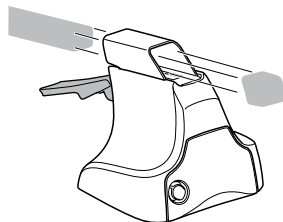
x4



x4



480 Traverse
(North America)



x4

3



754 Rapid System



	X
CITROËN C-Zero, 5-dr Hatchback, 10-	36,5
MITSUBISHI i-MiEV, 5-dr Hatchback, 10- / *12-	36,5



	Y
CITROËN C-Zero, 5-dr Hatchback, 10-	35
MITSUBISHI i-MiEV, 5-dr Hatchback, 10- / *12-	35

3

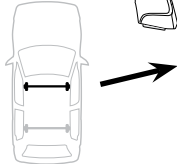
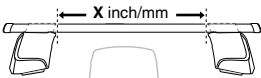


480R Rapid Traverse

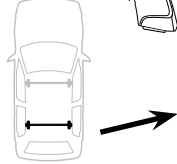


480 Traverse

(North America)



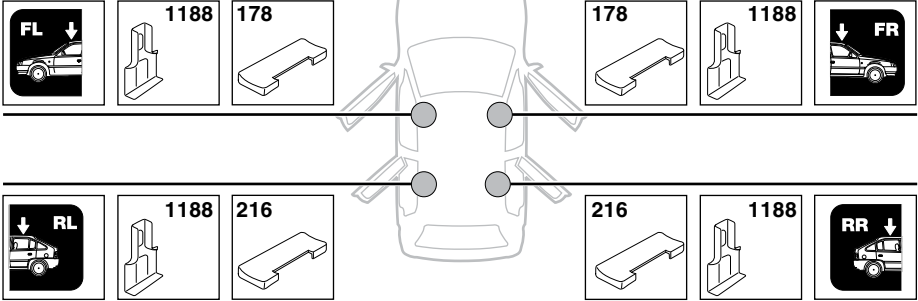
	X inch	X mm
CITROËN C-Zero, 5-dr Hatchback, 10-	40"	1016 mm
MITSUBISHI i-MiEV, 5-dr Hatchback, 10- / *12-	40"	1016 mm



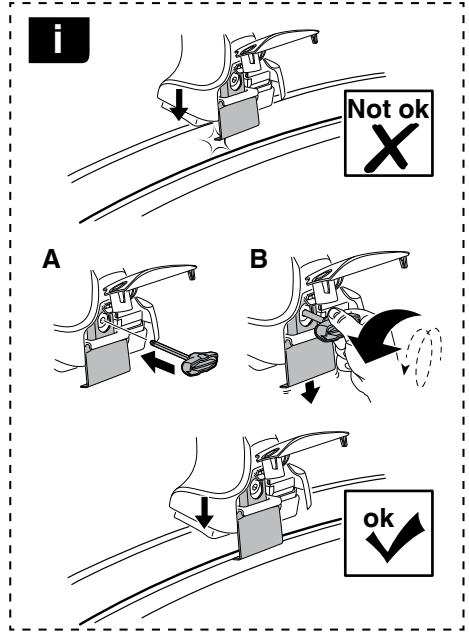
	Y inch	Y mm
CITROËN C-Zero, 5-dr Hatchback, 10-	39 ³/₈"	1001 mm
MITSUBISHI i-MiEV, 5-dr Hatchback, 10- / *12-	39 ³/₈"	1001 mm

4

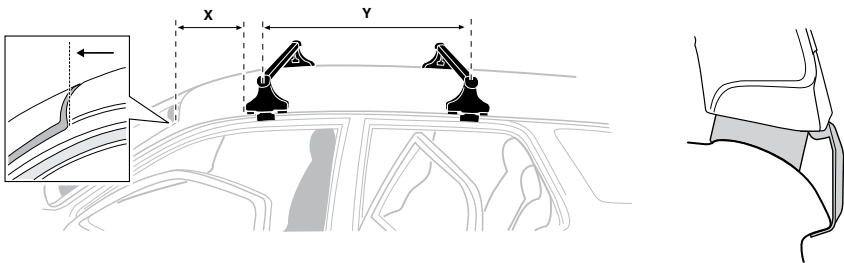


5**CITROËN C-Zero, 5-dr Hatchback, 10-
MITSUBISHI i-MiEV, 5-dr Hatchback, 10-/*12-**

6



	X mm	Y mm	X inch	Y inch
CITROËN C-Zero, 5-dr Hatchback, 10-	410 mm	700 mm	16 ⁷ / ₈ "	27 ¹ / ₂ "
mitsubishi i-MiEV, 5-dr Hatchback, 10-/*12-	410 mm	700 mm	16 ⁷ / ₈ "	27 ¹ / ₂ "



7



GB/US	Tighten alternately
D	Die Schrauben abwechselnd anziehen
F	Serrer alternativement chaque côté
NL	Afwisselend aan de linker- en de rechterkant aandraaien
I	Alternare il serraggio delle viti
E	Apertar alternativamente
PT	Aperte alternadamente
S	Dra åt växelvis
FIN	Kierrä vuorotellen
EST	Pinguldage vaheldumisi
LAT	Pielveiciet pamišus
LIT	Užsukinėkite pakaitomis
PL	Śruby dokręcaj naprzemiennie
RU	Загтягивайте попеременно

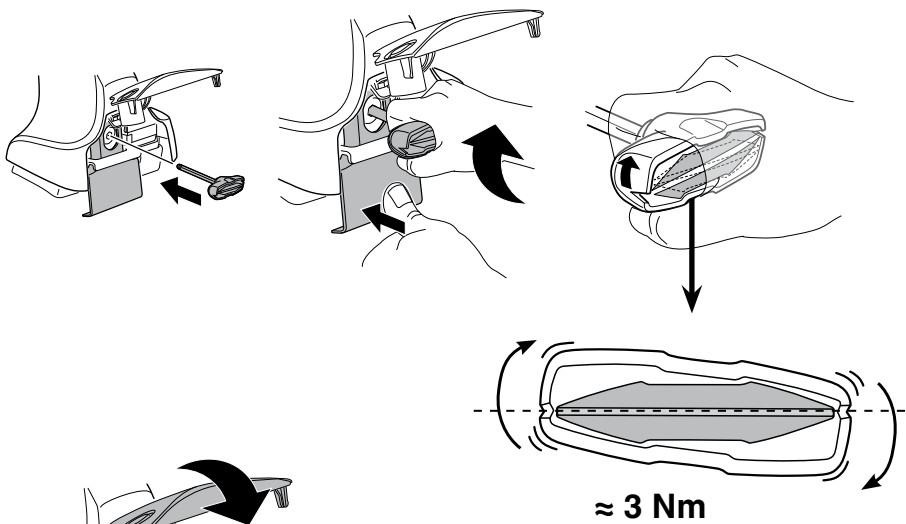
CZ	Pokręťta bagażnika dokręcaj naprzemiennie.
SK	Dofahajte striedavo
SLO	Privijajte izmenično.
HR	Naizmjenično zategnite
HU	Egymástól függetlenül szorítandó
GR	Σφιγίγεται εναλλάξ
TR	Dönüşümlü sıkın

中文 交替拧紧

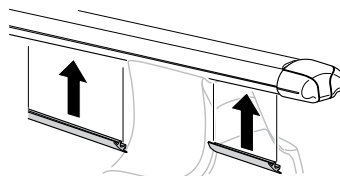
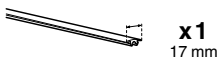
한국어 번갈아 가며 조이십시오.

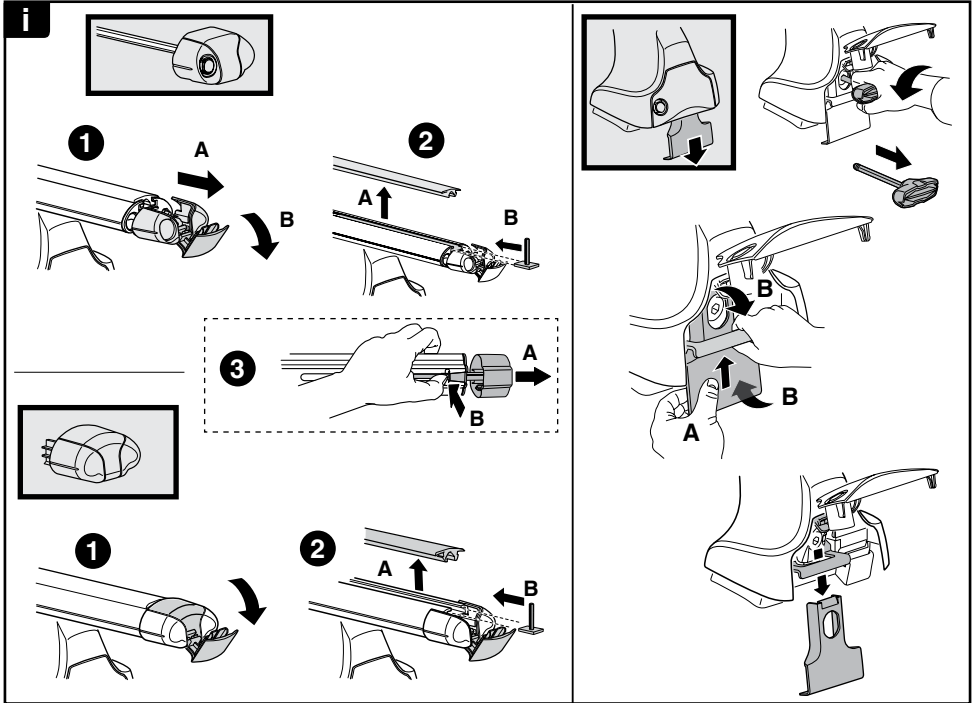
日本語 交互に締め付けてください。

ไทย ชันในแบบสลับ

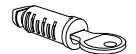
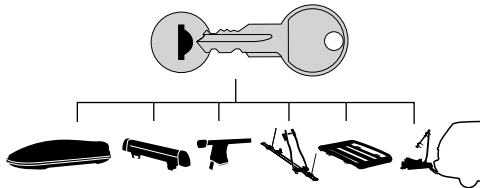


8





THULE
SWEDEN
**ONE
KEY
SYSTEM**



- 544** (x4)
- 596** (x6)
- 588** (x8)
- NA **510** (x10)
- EUR **452** (x12)
- ASIA

