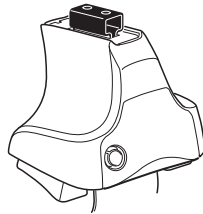
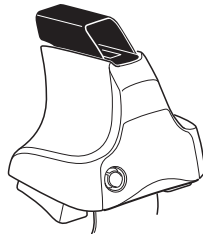
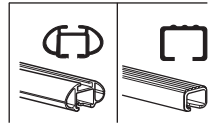


Kit 1685

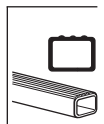
VOLVO V40, 5-dr Hatchback, 12-



754 Rapid System
480R Rapid Traverse (North America)



480 Traverse (North America)

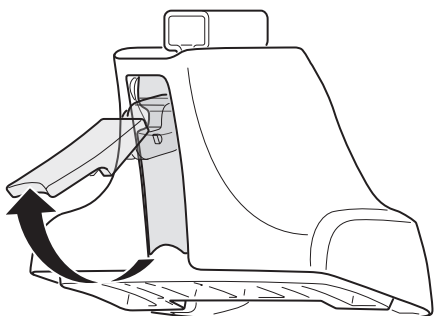


- 754 Rapid System: x1 (Ruler), x4 (Rapid System), x4 (480R Rapid Traverse (North America)), x4 (Screwdriver)
- 480R Rapid Traverse (North America): x1 (Ruler), x4 (480R Rapid Traverse (North America)), x4 (Screwdriver)
- 480 Traverse (North America): x1 (Ruler), x4 (480 Traverse (North America)), x4 (Screwdriver)

- Bar: x2
- Hardware: x2 (23 mm), x2 (23 mm), x4 (Screw), x4 (Screw)
- Hardware: x1 (17 mm), x2 (23 mm), x2 (23 mm), x4 (Screw)
- (North America): x2 (23 mm), x2 (23 mm), x2 (23 mm), x2 (Bar), x2 (Bar)

- Bracket: x1 (1235), x1 (1236), x1 (1237), x1 (1238)
- Bracket: x2 (03), x1 (348), x1 (349)
- Label: x1 (FR, FL, RL, RR)

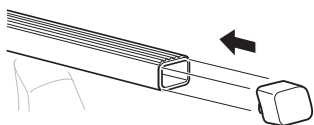
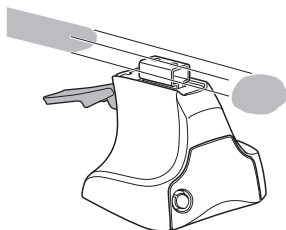
1



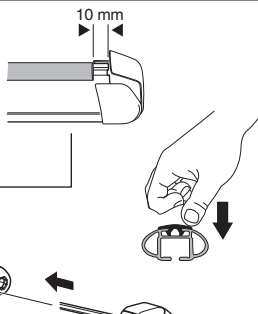
2



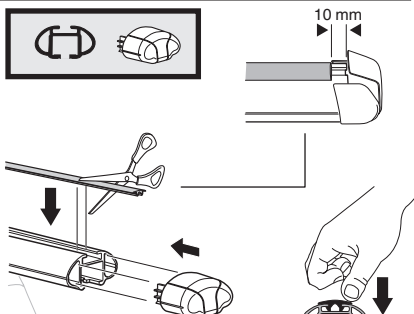
754 Rapid System
480R Rapid Traverse
(North America)



x4



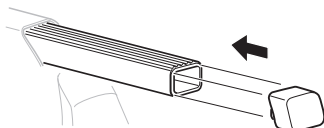
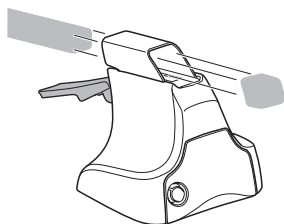
x4



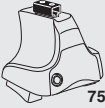
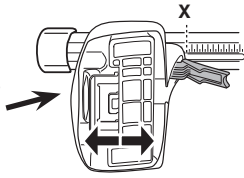
x4



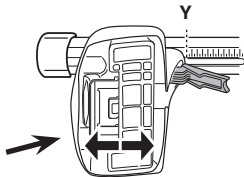
480 Traverse
(North America)



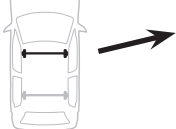
x4

3**754** Rapid System

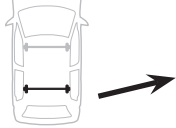
	X
VOLVO V40, 5-dr Hatchback, 12-	41



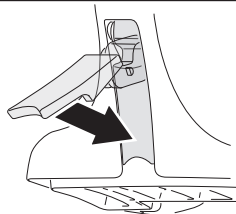
	Y
VOLVO V40, 5-dr Hatchback, 12-	29

3**480R** Rapid Traverse**480** Traverse**(North America)**

	X inch	X mm
VOLVO V40, 5-dr Hatchback, 12-	41 3/4"	1061 mm

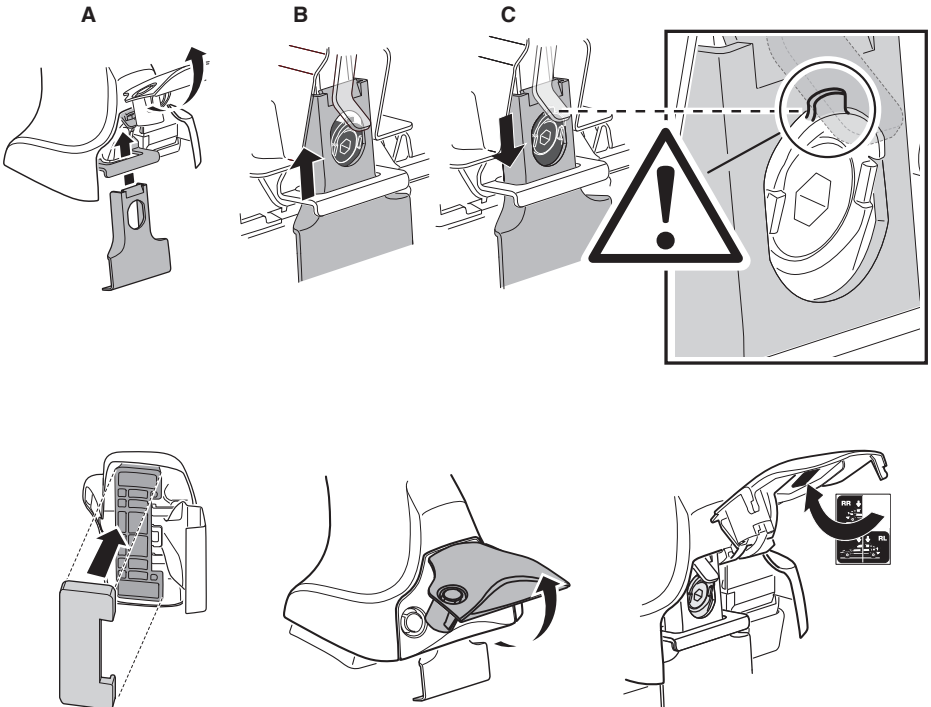
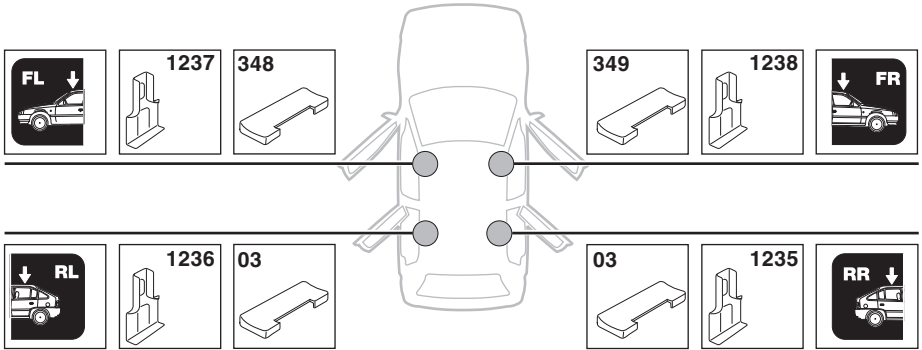


	Y inch	Y mm
VOLVO V40, 5-dr Hatchback, 12-	37"	941 mm

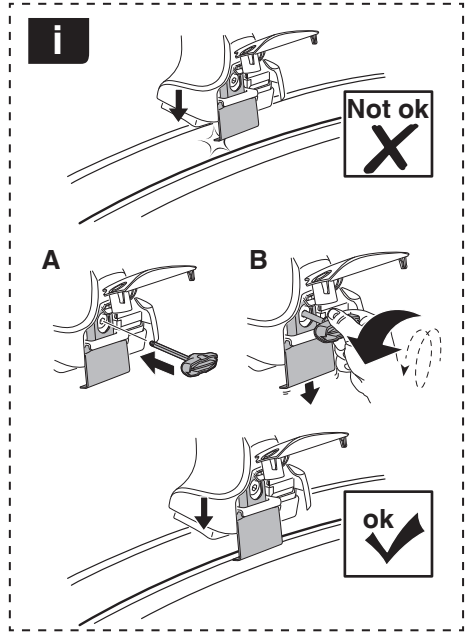
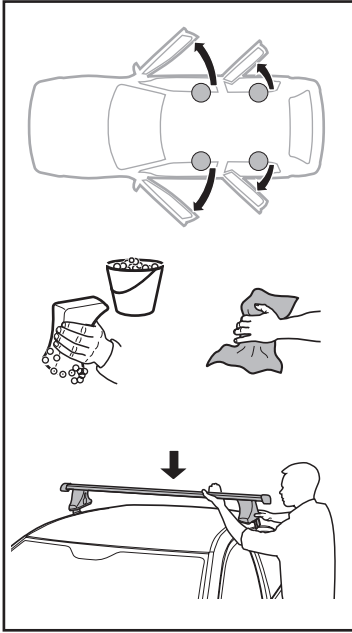
4

5

VOLVO V40, 5-dr Hatchback, 12-

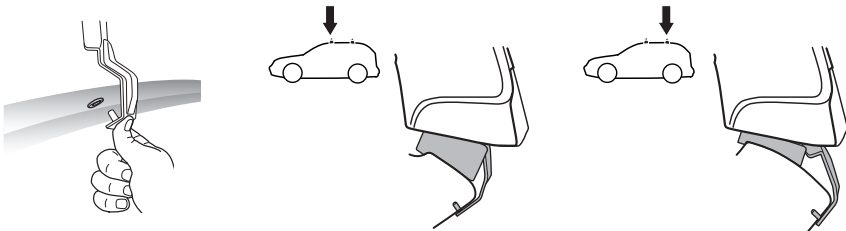
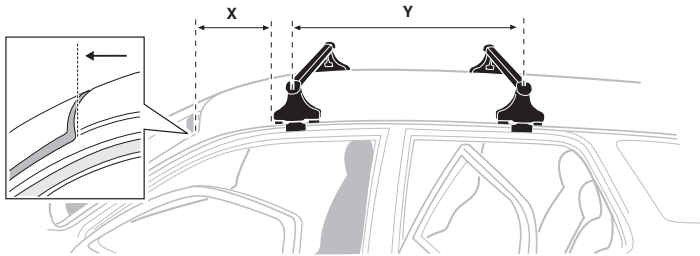


6

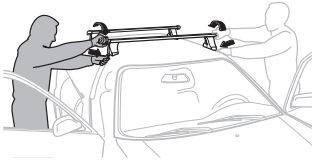


VOLVO V40, 5-dr Hatchback, 12-

X mm	Y mm	X inch	Y inch
220 mm	765 mm	8 5/8"	30 1/8"



7



GB/US	Tighten alternately
D	Die Schrauben abwechselnd anziehen
F	Serrer alternativement chaque côté
NL	Afwisselend aan de linker- en de rechterkant aandraaien
I	Alternare il serraggio delle viti
E	Apretar alternativamente
PT	Aperte alternadamente
S	Dra åt växelvis
FIN	Kierrä vuorotellen
EST	Pinguldage vaheldumisi
LAT	Pielveiciet pamišus
LIT	Užsukinėkite pakaitomis
PL	Śruby dokręcaj naprzemiennie
RU	Затягивайте попеременно

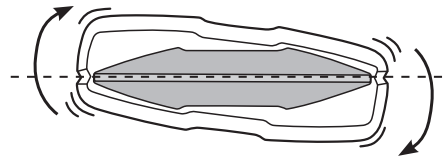
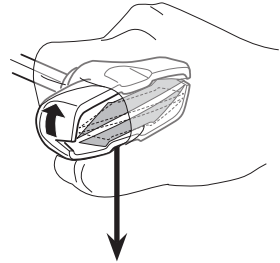
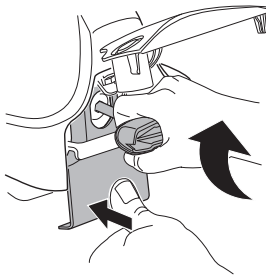
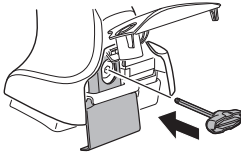
CZ	Pokręřta багаžnika dokręcaj naprzemiennie.
SK	Dofahajte striedavo
SLO	Privijajte izmenično.
HR	Naizmjениčno zategnite
HU	Egymástól függetlenül szorítandó
GR	Σφιγγείτε εναλλάξ
TR	Dönüşümlü sıkın

中文 交替拧紧

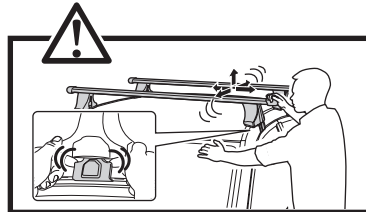
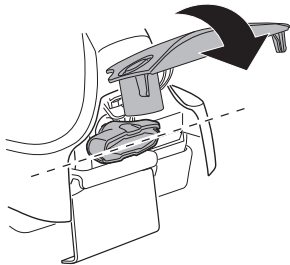
한국어 번갈아 가며 조이십시오.

日本語 交互に締め付けてください。

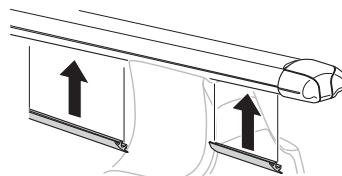
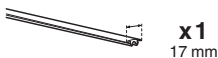
ไทย ชันในแบบสลับ

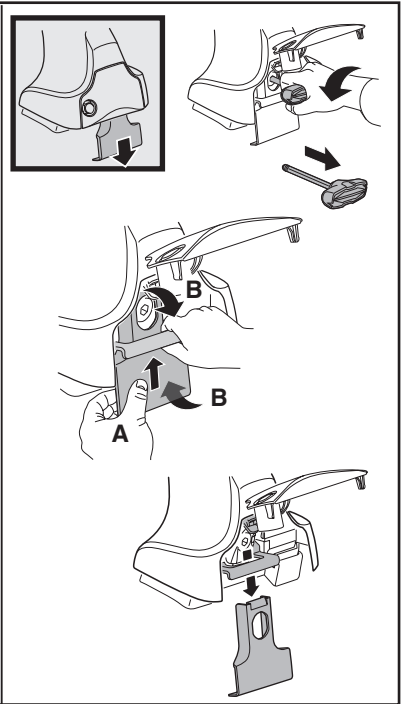
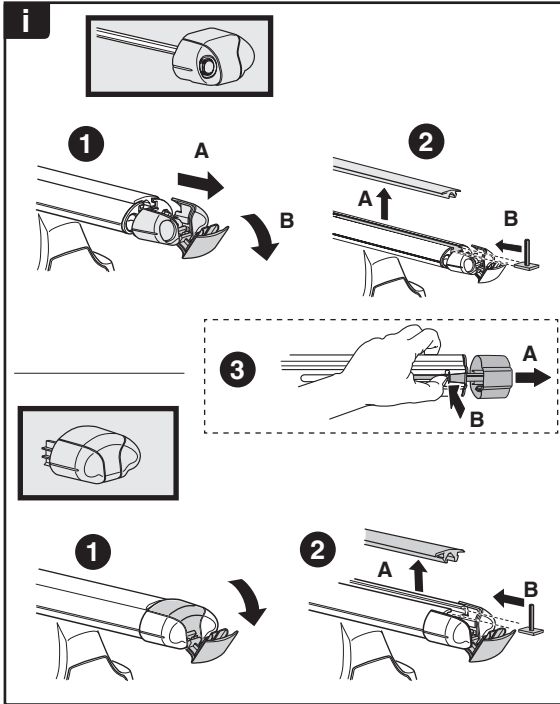
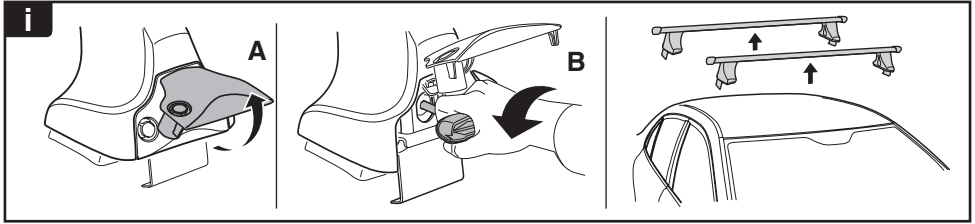


≈ 3 Nm

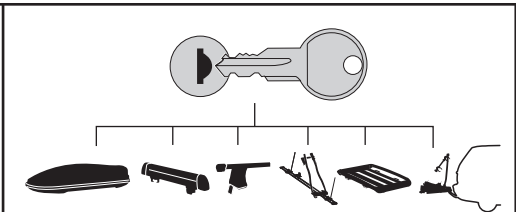


8

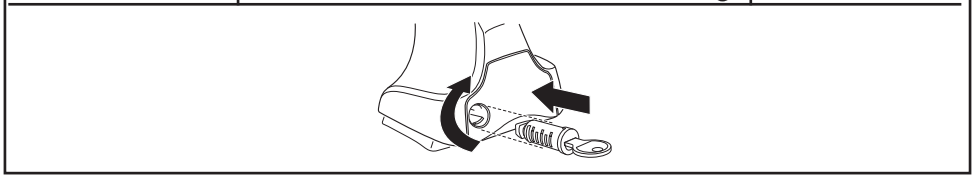




THULE
SWEDEN
**ONE
KEY
SYSTEM**



- 544** (x4)
 - 596** (x6)
 - 588** (x8)
 - 510** (x10)
 - 452** (x12)
- NA
EUR
ASIA



WW ▶ Thule Sweden AB, Box 69, 330 33 Hillerstorp, SWEDEN
NA ▶ Thule Inc., 42 Silvermine Road, Seymour, Connecticut 06483, USA

info@thule.com
 customer.service@thule.com

www.thule.com