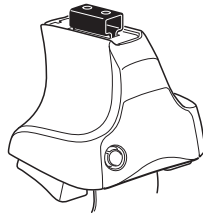
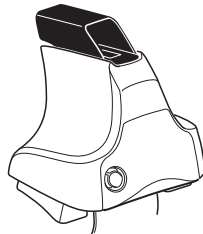
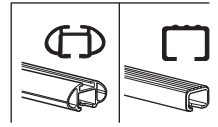


Kit 1706

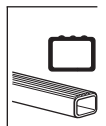
CHEVROLET Onix, 5-dr Hatchback, 12-



754 Rapid System
480R Rapid Traverse (North America)



480 Traverse (North America)



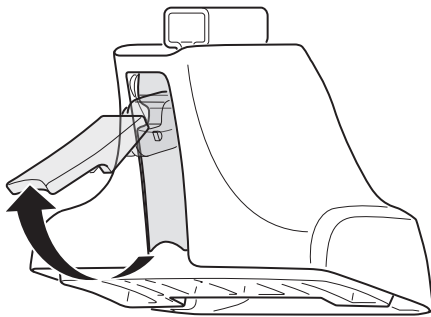
- 754 Rapid System: x4
- 480R Rapid Traverse (North America): x4
- 754 Rapid System: x1
- 480R Rapid Traverse (North America): x4

- 480 Traverse (North America): x1
- 480 Traverse (North America): x4

- 2x 23 mm screws
- 2x 17 mm screws
- 2x 23 mm screws
- 4x nuts
- 4x washers
- 2x 23 mm screws (North America)
- 2x 23 mm screws (North America)

- 1244 x2
- 1247 x2
- 93 x2
- 204 x1
- 206 x1
- FR & RL diagram: x1

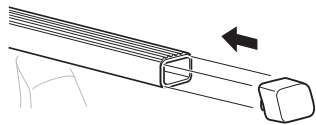
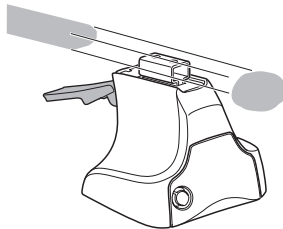
1



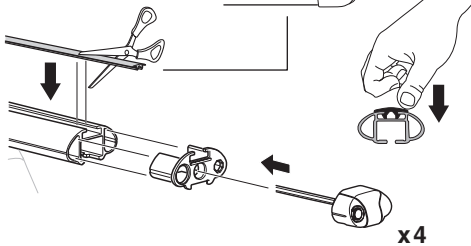
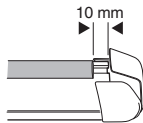
2



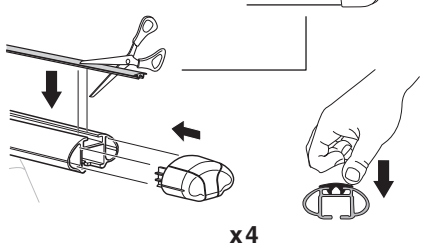
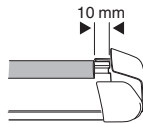
754 Rapid System
480R Rapid Traverse
(North America)



x4



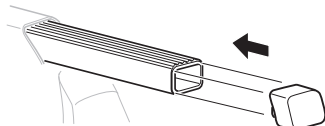
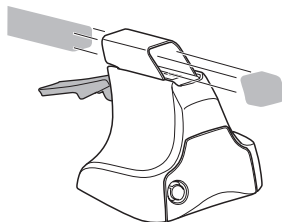
x4



x4

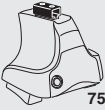


480 Traverse
(North America)

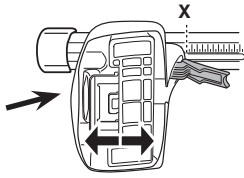


x4

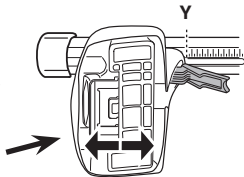
3



754 Rapid System



	X
CHEVROLET Onix, 5-dr Hatchback, 12-	33



	Y
CHEVROLET Onix, 5-dr Hatchback, 12-	32

3

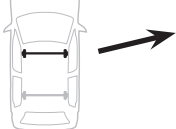


480R Rapid Traverse

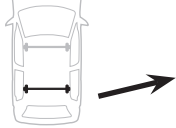


480 Traverse

(North America)

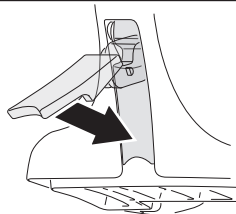


	X inch	X mm
CHEVROLET Onix, 5-dr Hatchback, 12-	38 5/8"	981 mm



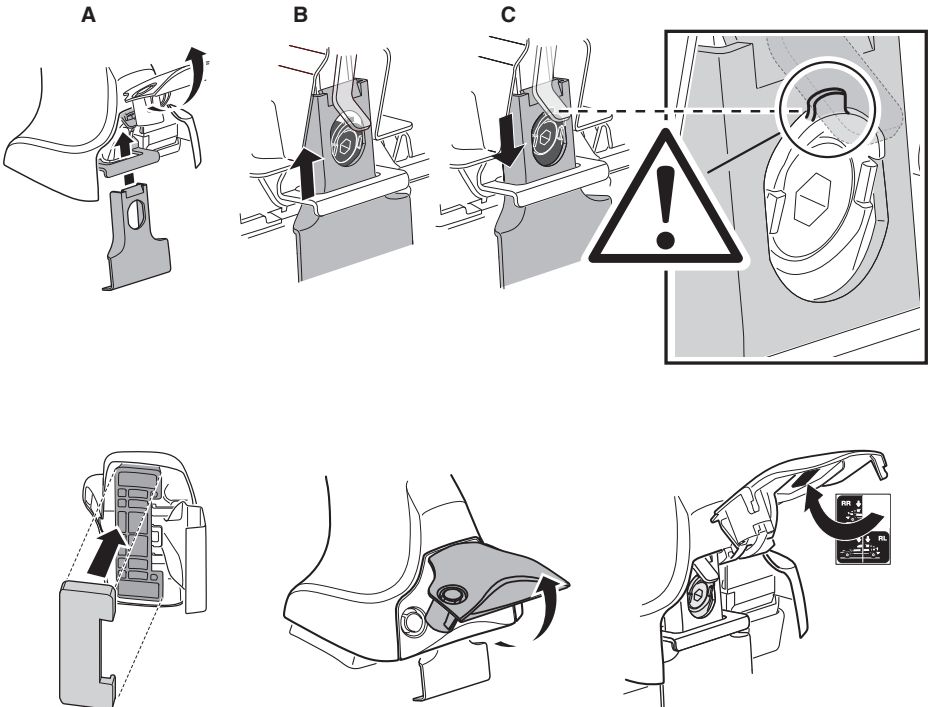
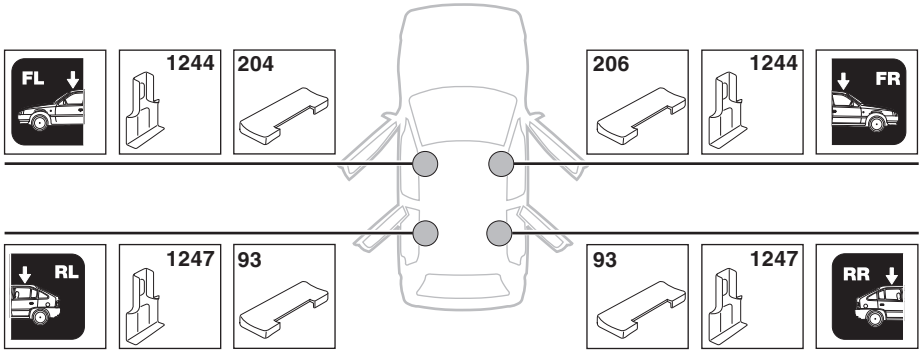
	Y inch	Y mm
CHEVROLET Onix, 5-dr Hatchback, 12-	38 1/4"	971 mm

4

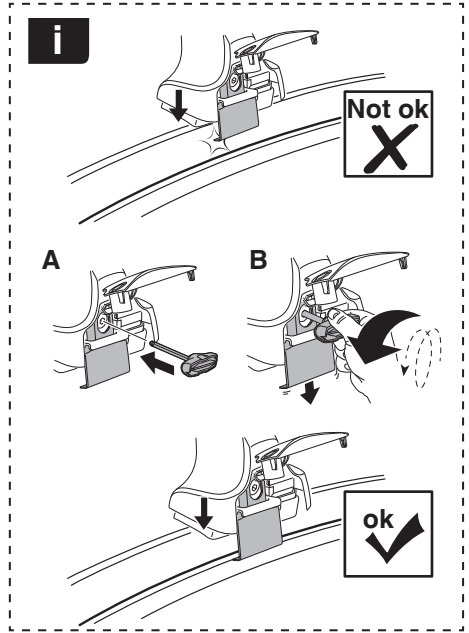
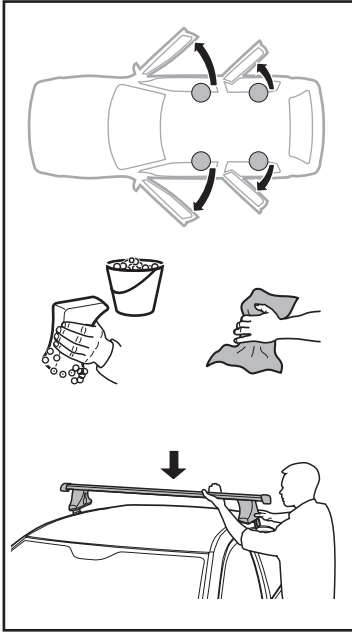


5

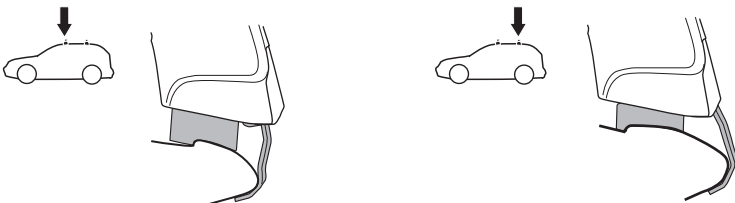
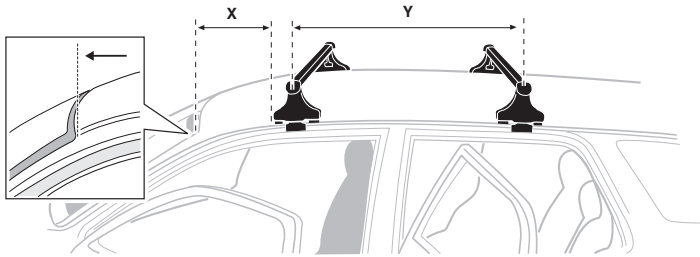
CHEVROLET Onix, 5-dr Hatchback, 12-



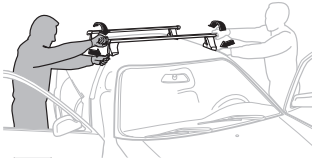
6



	X mm	Y mm	X inch	Y inch
CHEVROLET Onix, 5-dr Hatchback, 12-	280 mm	700 mm	11 "	27 1/2 "



7



GB/US Tighten alternately
 D Die Schrauben abwechselnd anziehen
 F Serrer alternativement chaque côté
 NL Afwisselend aan de linker- en de rechterkant aandraaien
 I Alternare il serraggio delle viti
 E Apretar alternativamente
 PT Aperte alternadamente
 S Dra åt växelvis
 FIN Kierrä vuorotellen
 EST Pinguldage vaheldumisi
 LAT Pievelciēt pamīšus
 LIT Užsukinėkite pakaitomis
 PL Śruby dokręcaj naprzemiennie
 RU Затягивайте попеременно

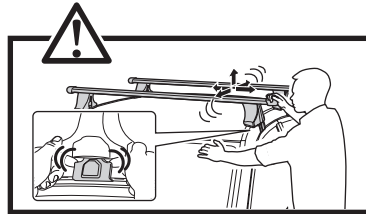
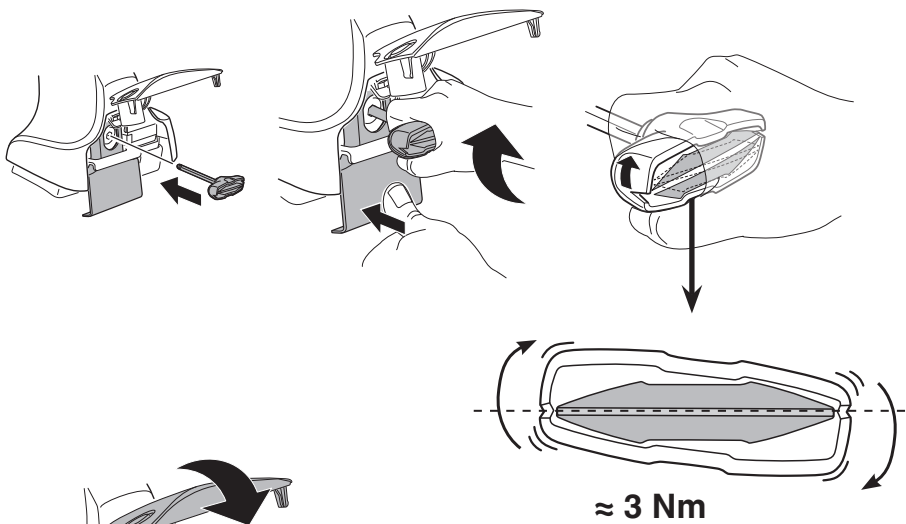
CZ Pokręťta bagażníka dokręcaj dokręcaj naprzemiennie.
 SK Dofahajte striedavo
 SLO Privijajte izmenično.
 HR Naizmjenočno zategnite
 HU Egymástól függetlenül szorítandó
 GR Σφιγίγες εναλλάξ
 TR Dönüşümlü sıkın

中文 交替拧紧

한국어 번갈아 가며 조이십시오.

日本語 交互に締め付けてください。

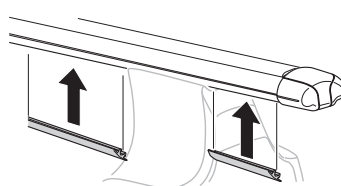
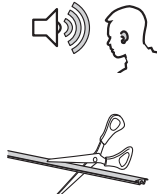
ไทย ชันในแบบสลับ

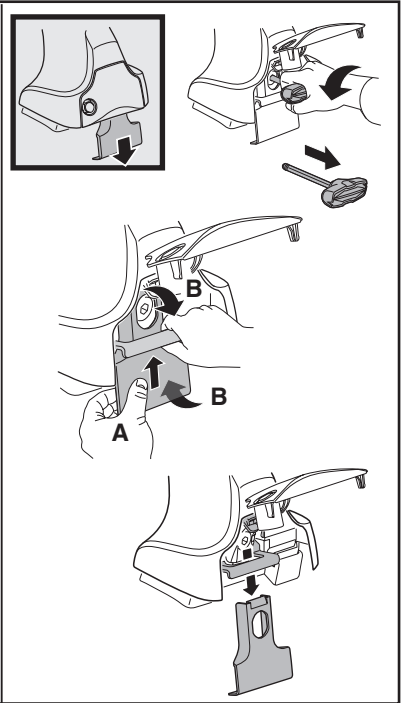
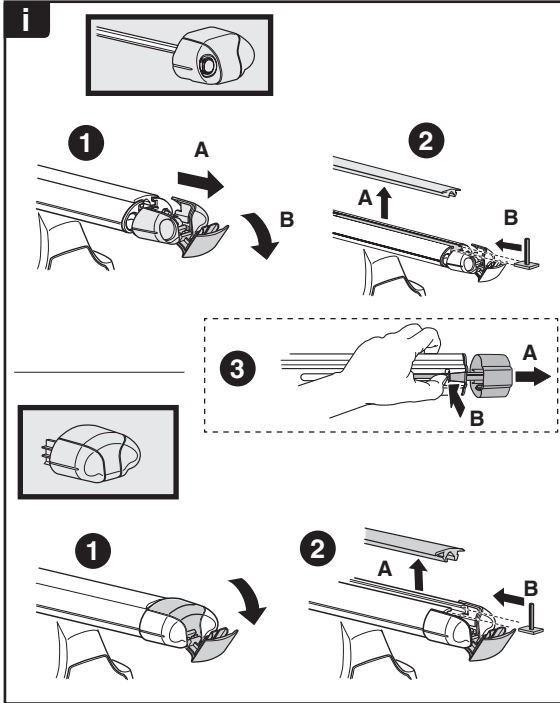
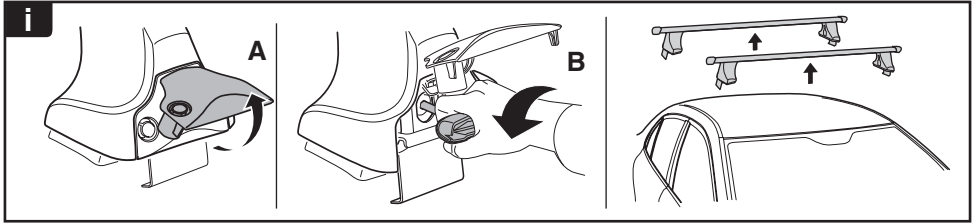


8



x1
17 mm





THULE
SWEDEN
**ONE
KEY
SYSTEM**



- 544 (x4)
- 596 (x6)
- 588 (x8)
- NA 510 (x10)
- EUR 452 (x12)
- ASIA



WW ▶ Thule Sweden AB, Box 69, 330 33 Hillerstorp, SWEDEN
NA ▶ Thule Inc., 42 Silvermine Road, Seymour, Connecticut 06483, USA

info@thule.com
customer.service@thule.com

www.thule.com