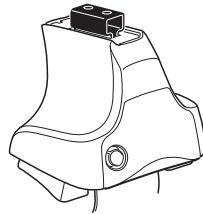
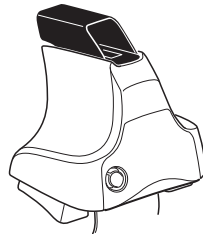
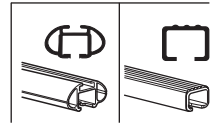


# Kit 1715

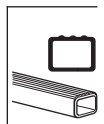
MAZDA 6, 4-dr Sedan, 13-



**754** Rapid System  
**480R** Rapid Traverse (North America)



**480** Traverse (North America)



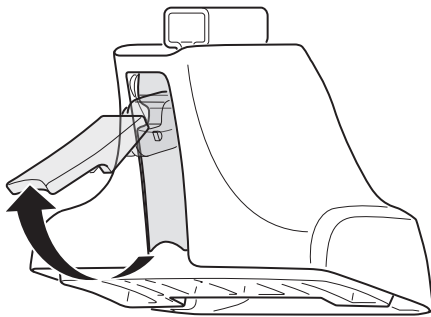
- 754 Rapid System x4
- 480R Rapid Traverse (North America) x4
- Ruler x1
- 754 Rapid System x4
- 480R Rapid Traverse (North America) x4
- Screwdriver x4

- Traverse (North America) x4
- Ruler x1
- Traverse (North America) x4
- Screwdriver x4

- Bar x2
- Hardware x2 (23 mm)
- Hardware x2 (17 mm)
- Hardware x2 (23 mm)
- Hardware x2 (23 mm)
- Hardware x4
- Hardware x4
- Hardware x2
- Hardware x2
- Hardware x2
- Hardware x2
- Hardware x2

- Bracket 1100 x2
- Bracket 1214 x2
- Bracket 216 x2
- Bracket 269 x1
- Bracket 272 x1
- Label x1

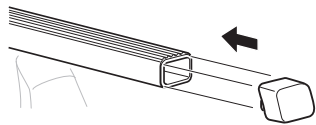
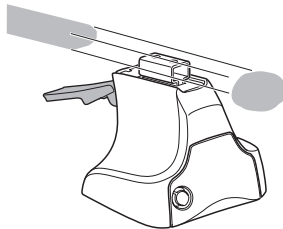
1



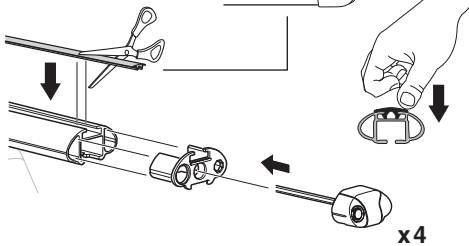
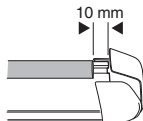
2



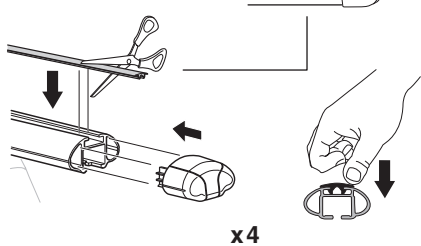
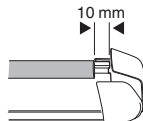
754 Rapid System  
480R Rapid Traverse  
(North America)



x4



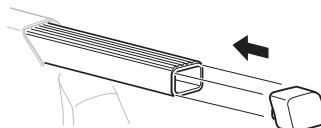
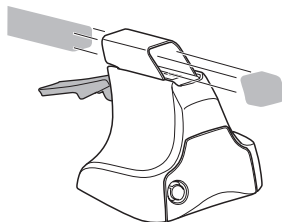
x4



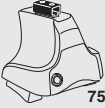
x4



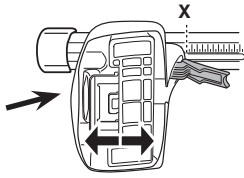
480 Traverse  
(North America)



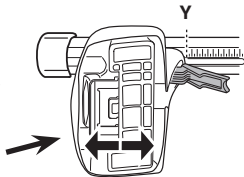
x4

**3**

754 Rapid System



	X
MAZDA 6, 4-dr Sedan, 13-	46,5



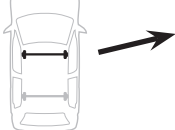
	Y
MAZDA 6, 4-dr Sedan, 13-	41,5

**3**

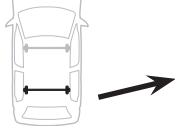
480R Rapid Traverse



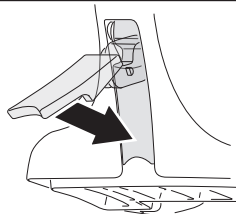
480 Traverse

**(North America)**

	X inch	X mm
MAZDA 6, 4-dr Sedan, 13-	43 <sup>7</sup> / <sub>8</sub> "	1116 mm

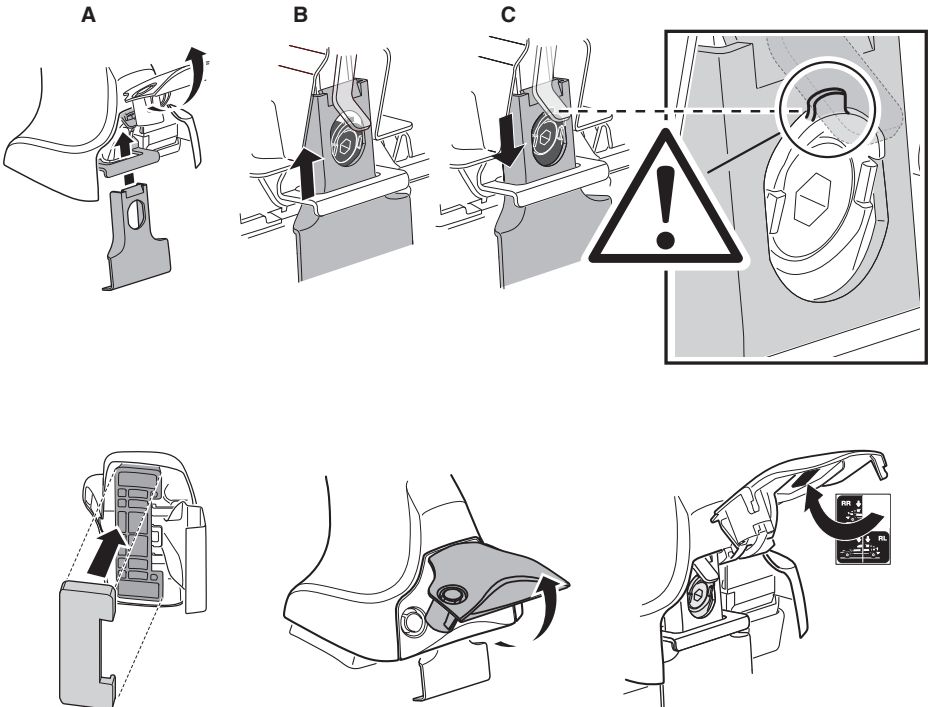
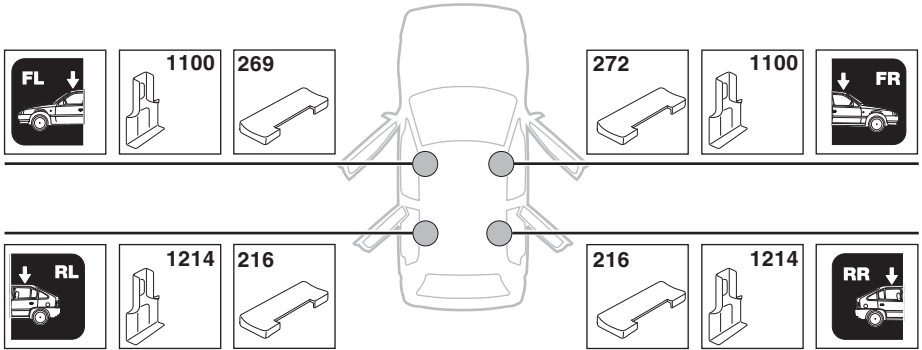


	Y inch	Y mm
MAZDA 6, 4-dr Sedan, 13-	42 "	1066 mm

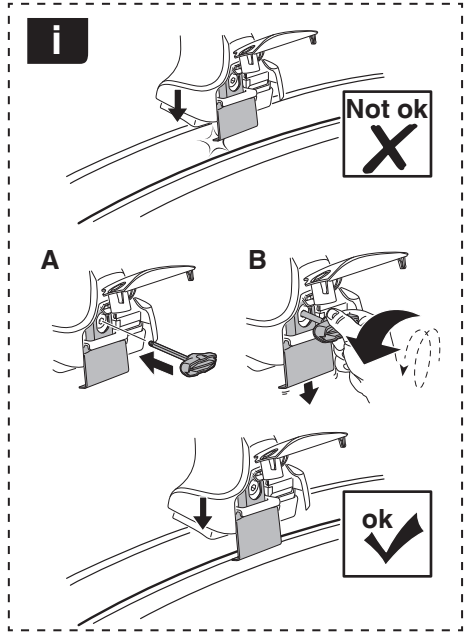
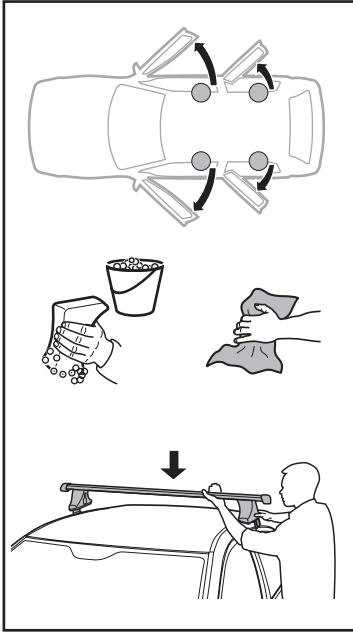
**4**

# 5

MAZDA 6, 4-dr Sedan, 13-



6



MAZDA 6, 4-dr Sedan, 13-

X mm

Y mm

X inch

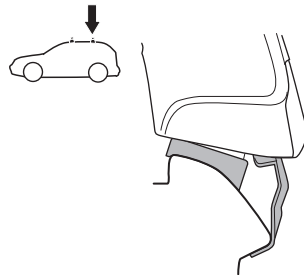
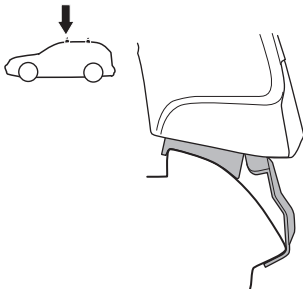
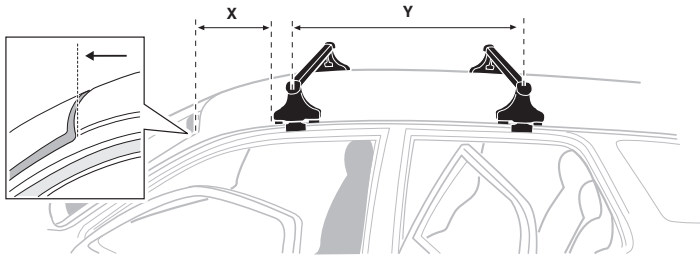
Y inch

250 mm

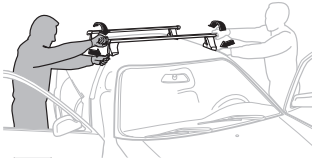
700 mm

9 7/8"

27 1/2"



7



GB/US Tighten alternately  
 D Die Schrauben abwechselnd anziehen  
 F Serrer alternativement chaque côté  
 NL Afwisselend aan de linker- en de rechterkant aandraaien  
 I Alternare il serraggio delle viti  
 E Apretar alternativamente  
 PT Aperte alternadamente  
 S Dra åt växelvis  
 FIN Kierrä vuorotellen  
 EST Pinguldage vaheldumisi  
 LAT Pievelciēt pamīšus  
 LIT Užsukinėkite pakaitomis  
 PL Śruby dokręcaj naprzemiennie  
 RU Затягивайте попеременно

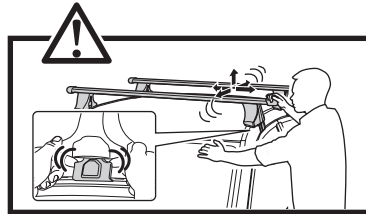
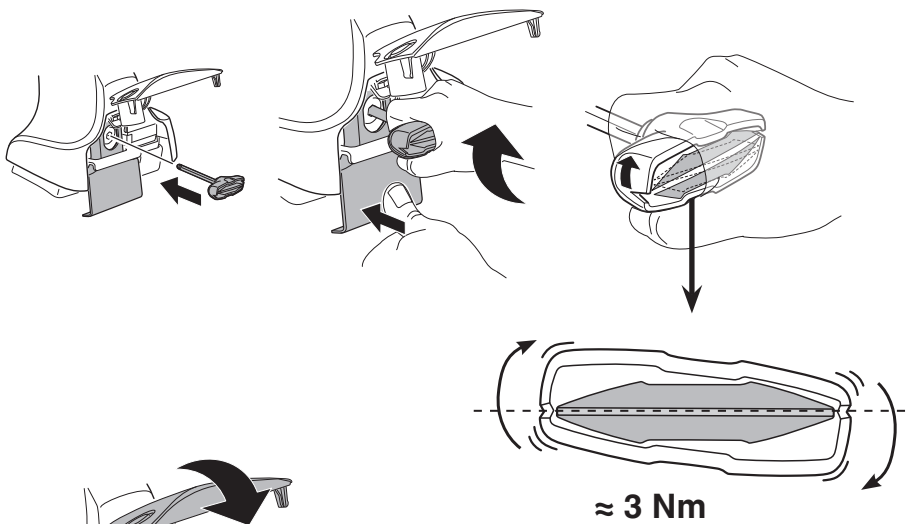
CZ Pokręťta bagażnika dokręcaj dokręcaj naprzemiennie.  
 SK Dofahajte striedavo  
 SLO Privijajte izmenično.  
 HR Naizmjerno zategnite  
 HU Egymástól függetlenül szorítandó  
 GR Σφιγγείτε εναλλάξ  
 TR Dönüşümlü sıkın

中文 交替拧紧

한국어 번갈아 가며 조이십시오.

日本語 交互に締め付けてください。

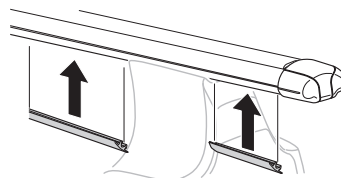
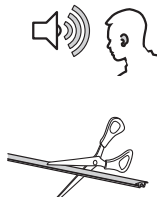
ไทย ชันในแบบสลับ

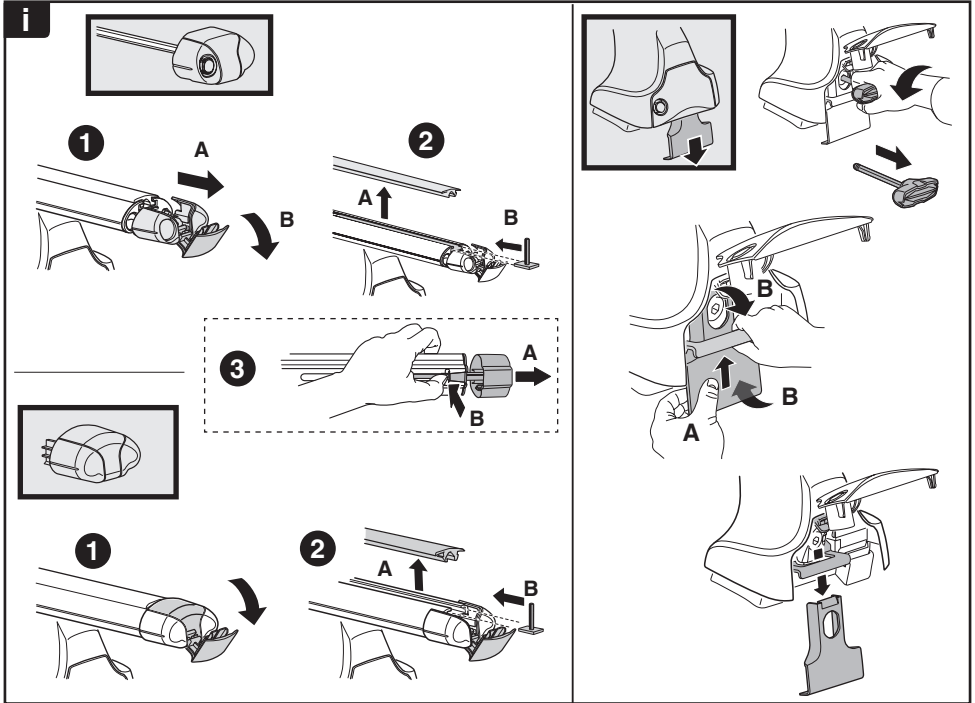
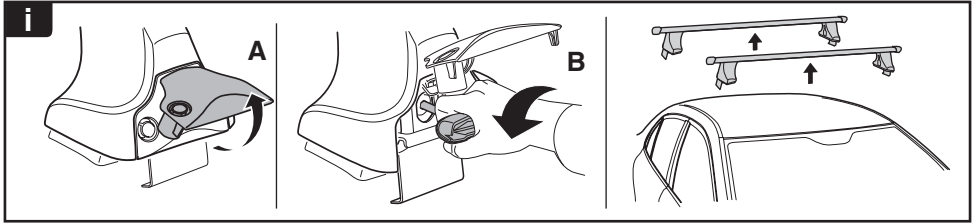


8

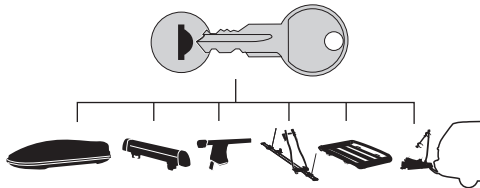


x1  
17 mm





**THULE**  
SWEDEN  
**ONE  
KEY  
SYSTEM**



**544** (x4)

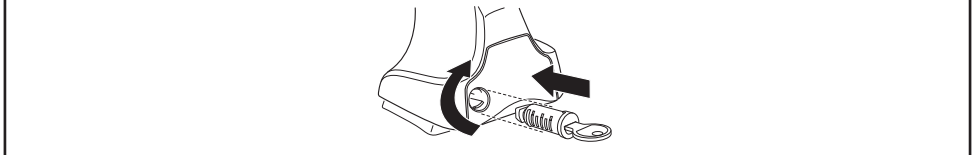
**596** (x6)

**588** (x8)

NA **510** (x10)

EUR **452** (x12)

ASIA



WW ▶ Thule Sweden AB, Box 69, 330 33 Hillerstorp, SWEDEN  
NA ▶ Thule Inc., 42 Silvermine Road, Seymour, Connecticut 06483, USA

info@thule.com  
customer.service@thule.com

www.thule.com

503-1715-01