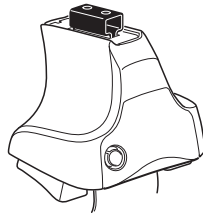
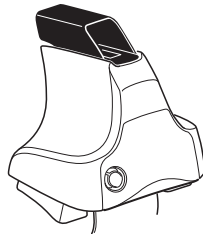
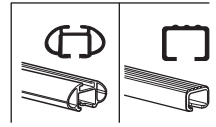


Kit 1717

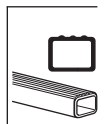
HYUNDAI HB20, 5-dr Hatchback, 12-



754 Rapid System
480R Rapid Traverse (North America)



480 Traverse (North America)

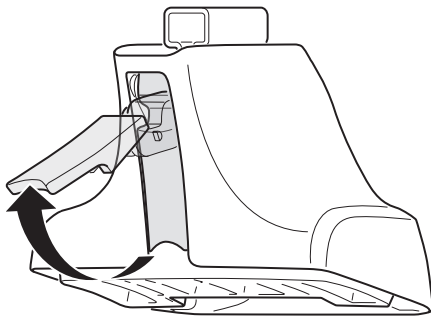


- 754 Rapid System: x1 (Ruler), x4 (Rapid System), x4 (480R Rapid Traverse (North America)), x4 (Screwdriver)
- 480R Rapid Traverse (North America): x1 (Ruler), x4 (480R Rapid Traverse (North America)), x4 (Screwdriver)
- 480 Traverse (North America): x1 (Ruler), x4 (480 Traverse (North America)), x4 (Screwdriver)

- Bar: x2
- Hardware: x2 (23 mm), x2 (23 mm), x4 (Screw), x4 (Screw)
- Hardware: x1 (17 mm), x2 (23 mm), x2 (23 mm), x4 (Screw)
- (North America): x2 (23 mm), x2 (23 mm), x2 (23 mm), x2 (23 mm)

- Bracket: 238 x2
- Bracket: 1100 x2
- Bracket: 239 x4
- Label: x1 (FR, FL, RL, RR)

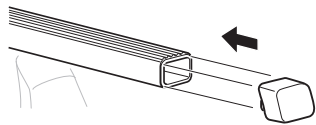
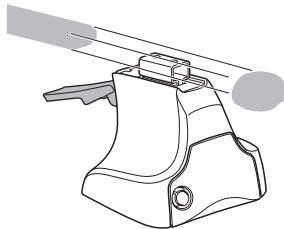
1



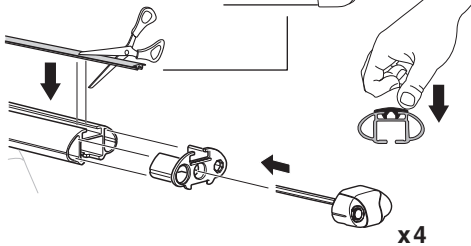
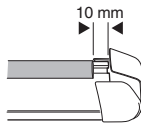
2



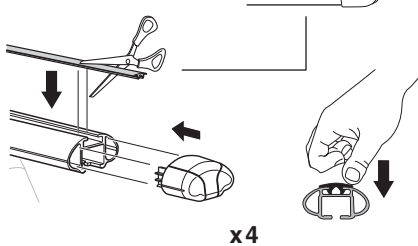
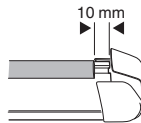
754 Rapid System
480R Rapid Traverse
(North America)



x4



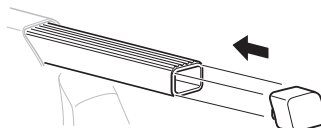
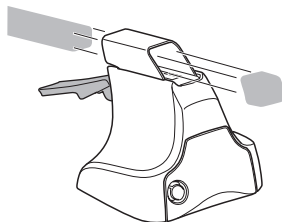
x4



x4

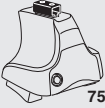


480 Traverse
(North America)

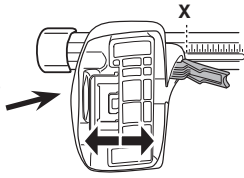


x4

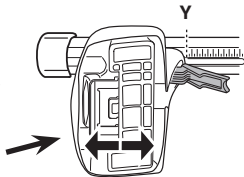
3



754 Rapid System



	X
HYUNDAI HB20, 5-dr Hatchback, 12-	37



	Y
HYUNDAI HB20, 5-dr Hatchback, 12-	36

3

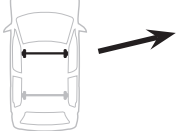


480R Rapid Traverse

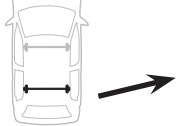


480 Traverse

(North America)

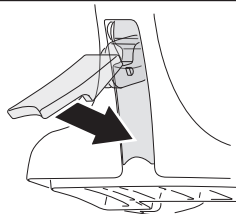


	X inch	X mm
HYUNDAI HB20, 5-dr Hatchback, 12-	40 1/4"	1021 mm



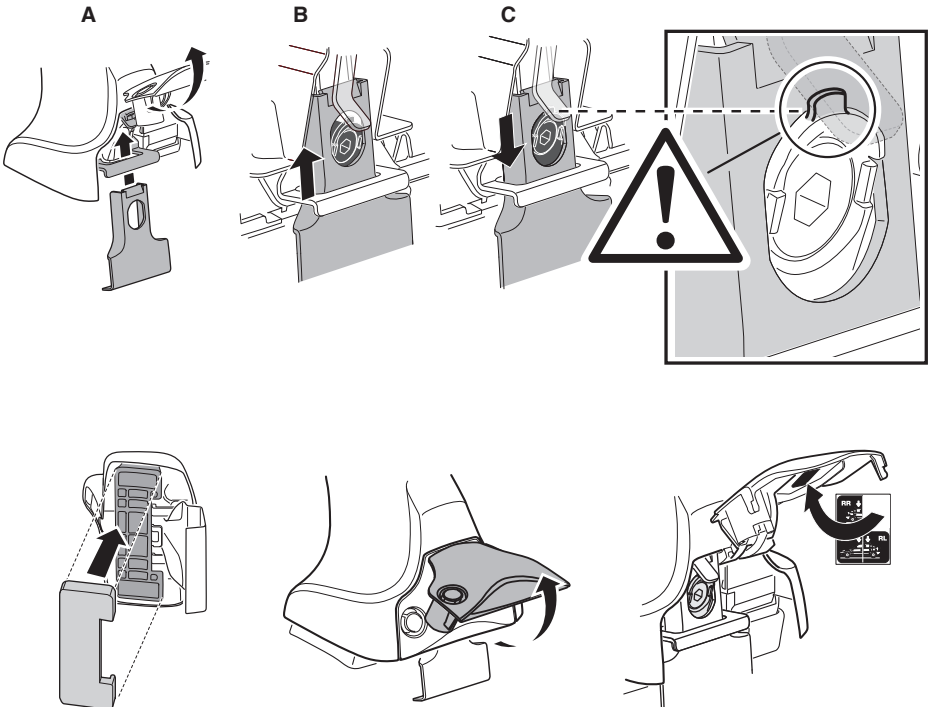
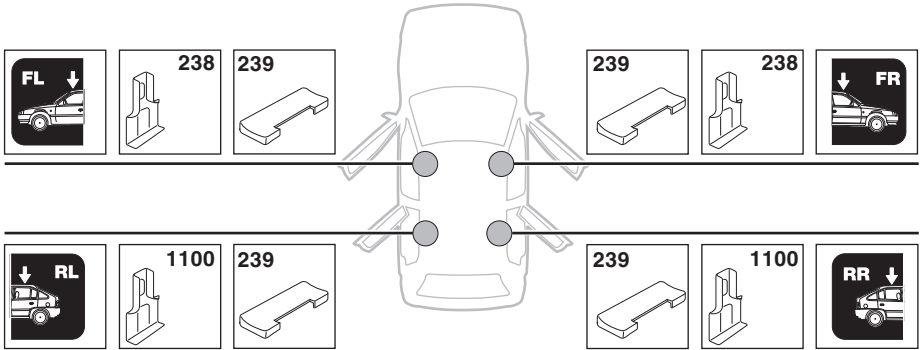
	Y inch	Y mm
HYUNDAI HB20, 5-dr Hatchback, 12-	37 3/4"	1011 mm

4

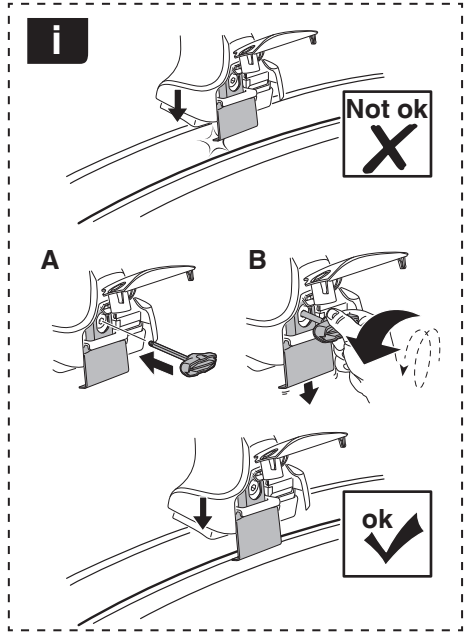
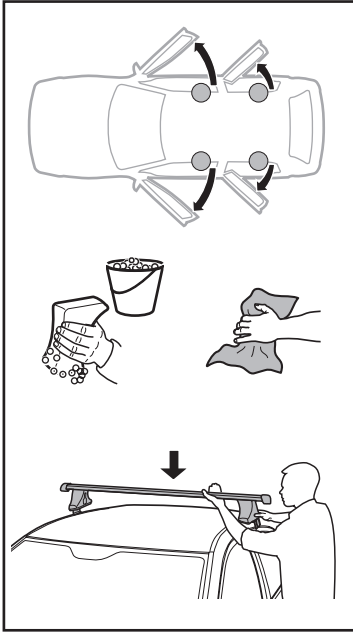


5

HYUNDAI HB20, 5-dr Hatchback, 12-

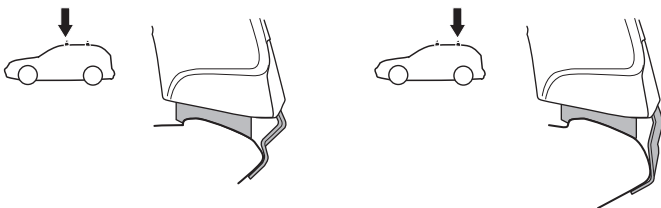
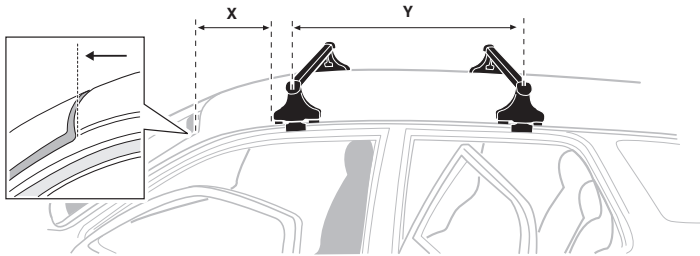


6

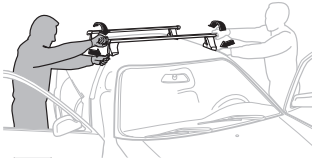


HYUNDAI HB20, 5-dr Hatchback, 12-

X mm	Y mm	X inch	Y inch
350 mm	600 mm	13 3/4"	23 5/8"



7



GB/US	Tighten alternately
D	Die Schrauben abwechselnd anziehen
F	Serrer alternativement chaque côté
NL	Afwisselend aan de linker- en de rechterkant aandraaien
I	Alternare il serraggio delle viti
E	Apretar alternativamente
PT	Aperte alternadamente
S	Dra åt växelvis
FIN	Kierrä vuorotellen
EST	Pinguldage vaheldumisi
LAT	Pielveiciet pamišus
LIT	Užsukinėkite pakaitomis
PL	Śruby dokręcaj naprzemiennie
RU	Загтягивайте попеременно

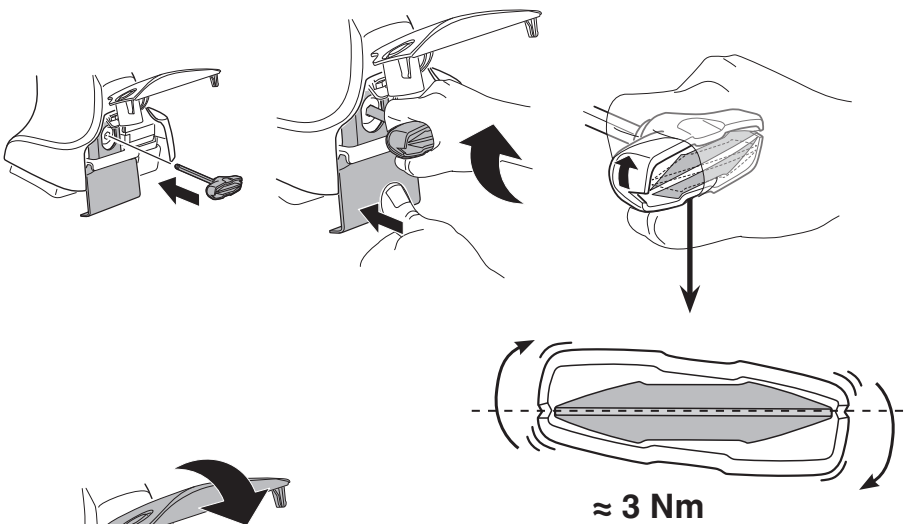
CZ	Pokręťta bagażníka dokręcaj naprzemiennie.
SK	Dofahajte striedavo
SLO	Privijajte izmenično.
HR	Naizmjenočno zategnite
HU	Egymástól függetlenül szorítandó
GR	Σφιγγείτε εναλλάξ
TR	Dönüşümlü sıkın

中文 交替拧紧

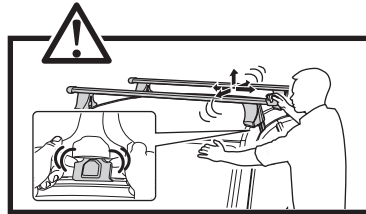
한국어 번갈아 가며 조이십시오.

日本語 交互に締め付けてください。

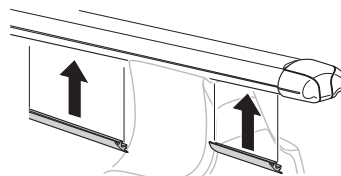
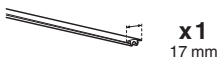
ไทย ชันในแบบสลับ

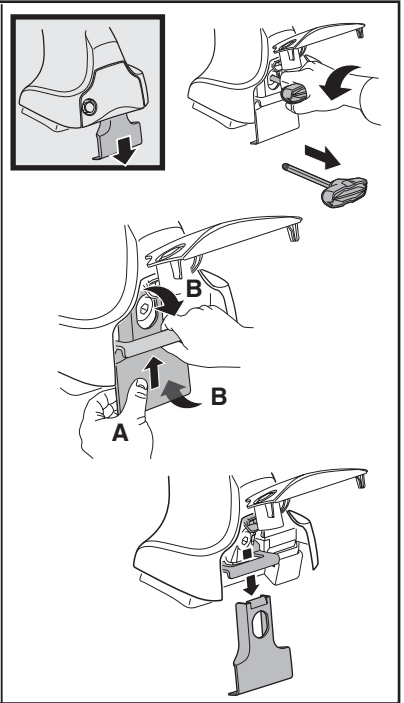
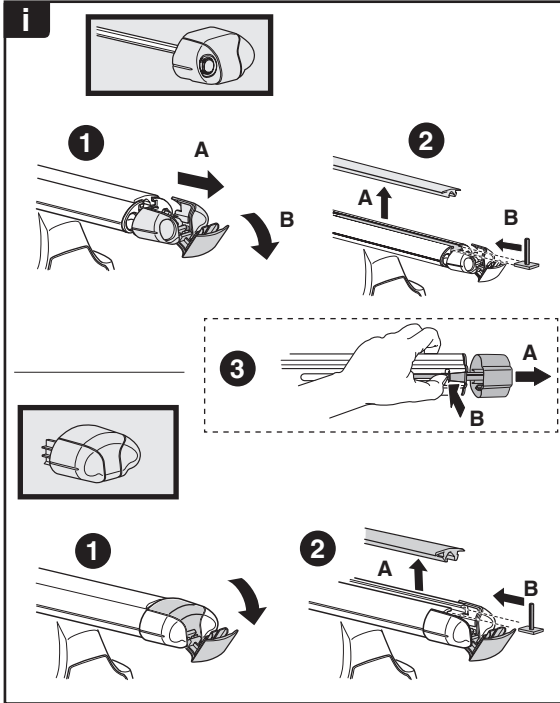
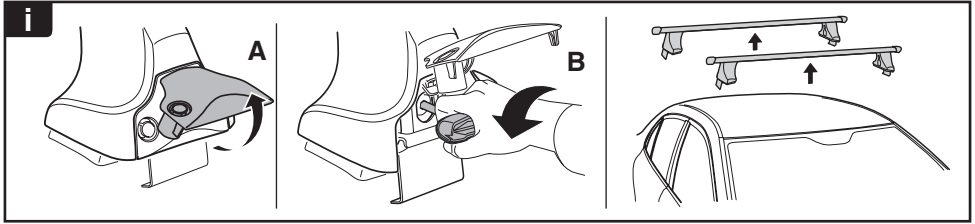


≈ 3 Nm

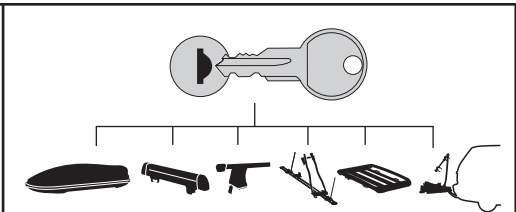


8

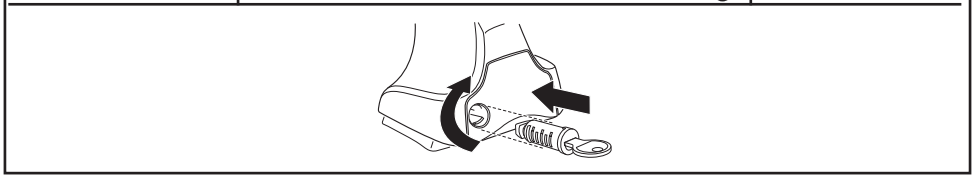




THULE
SWEDEN
**ONE
KEY
SYSTEM**



		(x4)
		(x6)
		(x8)
NA		(x10)
EUR		(x12)
ASIA		



WW ▶ Thule Sweden AB, Box 69, 330 33 Hillerstorp, SWEDEN
NA ▶ Thule Inc., 42 Silvermine Road, Seymour, Connecticut 06483, USA

info@thule.com
customer.service@thule.com

www.thule.com