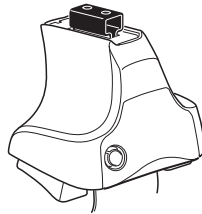


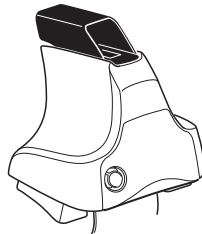
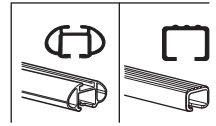
Kit 1723

FIAT 500L, 5-dr Hatchback, 12- / *14-

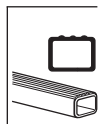
*North America



754 Rapid System
480R Rapid Traverse (North America)



480 Traverse (North America)

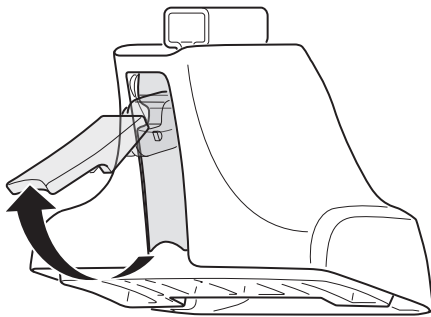


- 754 Rapid System: x1 (box), x4 (ruler), x4 (480R Rapid Traverse), x4 (screwdriver)
- 480R Rapid Traverse (North America): x4 (ruler), x4 (480 Traverse), x4 (screwdriver)

- Hardware: x2 (long bar), x2 (short bar), x2 (23 mm bar), x4 (screws), x4 (nuts)
- (North America): x1 (17 mm bar), x2 (23 mm bar), x2 (short bar), x2 (long bar), x2 (short bar), x2 (long bar)

- 1256 x4 (bracket)
- 180 x2 (bracket)
- 348 x1 (bracket)
- 349 x1 (bracket)
- Diagram: A car with 'FR' (Front Right) and 'FL' (Front Left) labels and arrows pointing to the front corners. x1

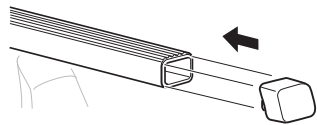
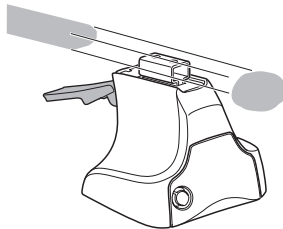
1



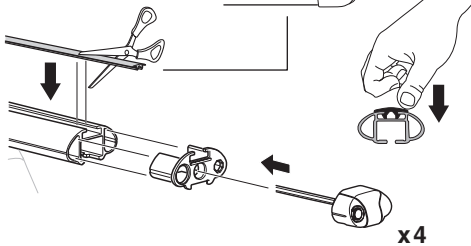
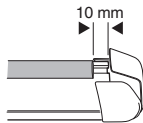
2



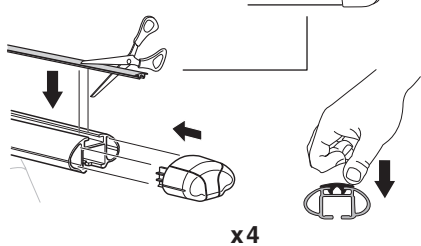
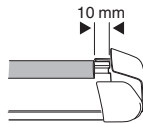
754 Rapid System
480R Rapid Traverse
(North America)



x4



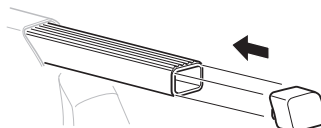
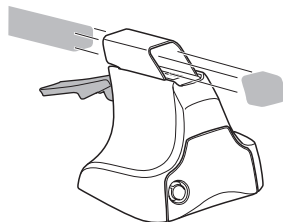
x4



x4

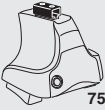


480 Traverse
(North America)

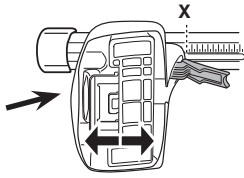


x4

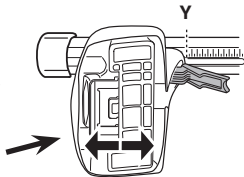
3



754 Rapid System



	X
FIAT 500L, 5-dr Hatchback, 12- / *14-	36,5



	Y
FIAT 500L, 5-dr Hatchback, 12- / *14-	36

3

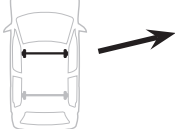


480R Rapid Traverse

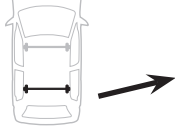


480 Traverse

(North America)

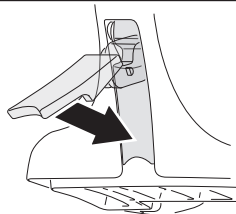


	X inch	X mm
FIAT 500L, 5-dr Hatchback, 12- / *14-	40"	1016 mm



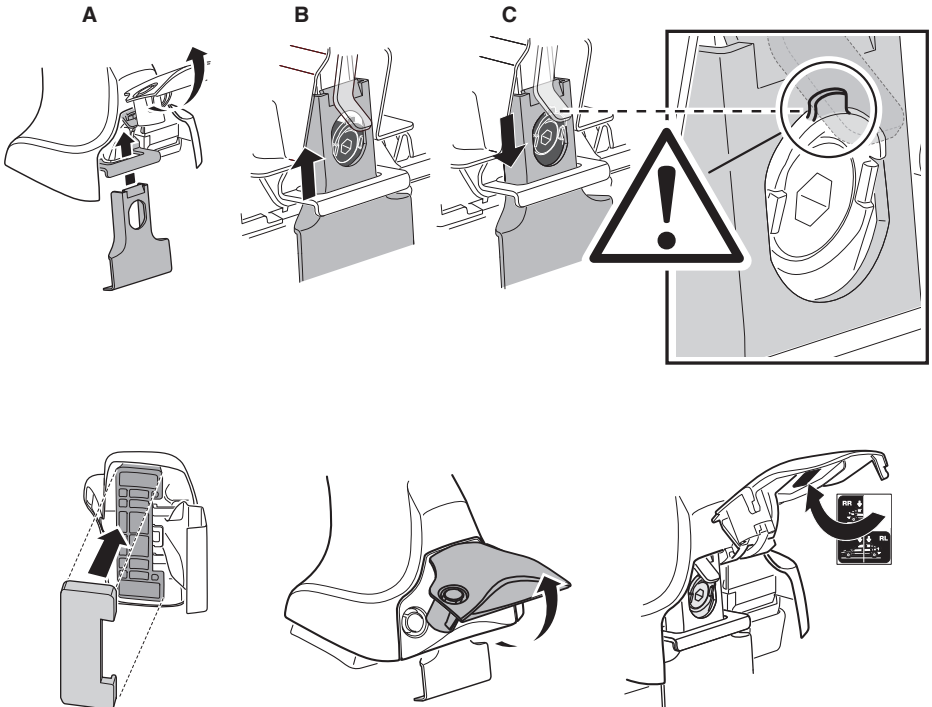
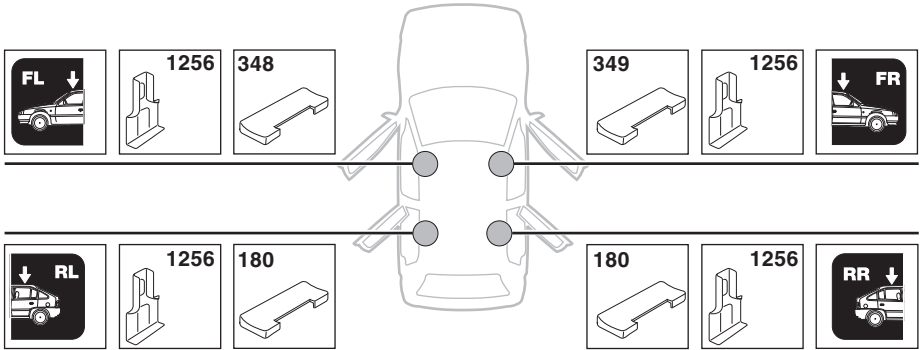
	Y inch	Y mm
FIAT 500L, 5-dr Hatchback, 12- / *14-	39 3/4"	1011 mm

4

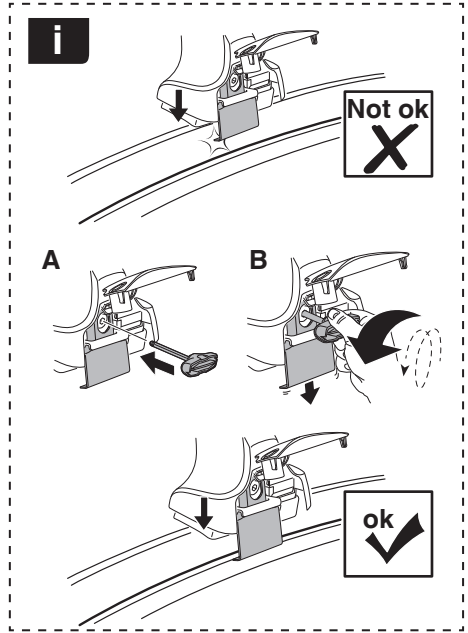
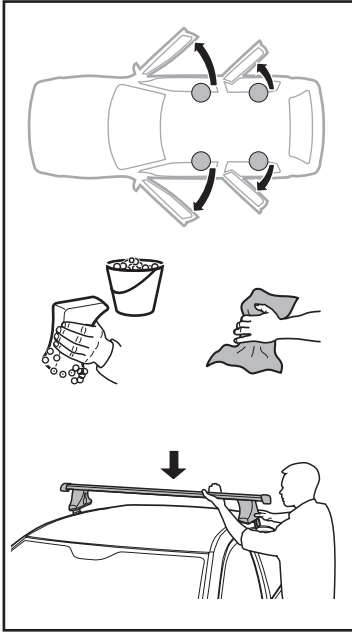


5

FIAT 500L, 5-dr Hatchback, 12- / *14-

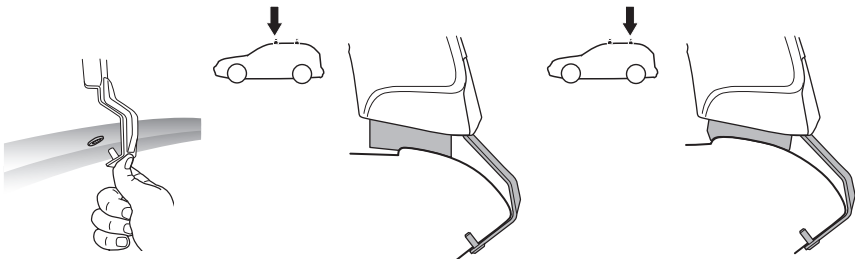
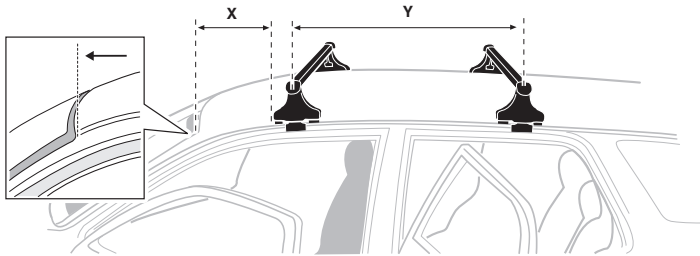


6

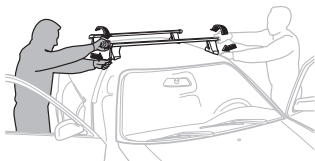


FIAT 500L, 5-dr Hatchback, 12- / *14-

X mm	Y mm	X inch	Y inch
240 mm	765 mm	9 1/2"	30 1/8"



7



GB/US Tighten alternately
 D Die Schrauben abwechselnd anziehen
 F Serrer alternativement chaque côté
 NL Afwisselend aan de linker- en de rechterkant aandraaien
 I Alternare il serraggio delle viti
 E Apretar alternativamente
 PT Aperte alternadamente
 S Dra åt växelvis
 FIN Kierrä vuorotellen
 EST Pinguldage vaheldumisi
 LAT Pieļieciet pamišus
 LIT Užsukinėkite pakaitomis
 PL Śruby dokręcaj naprzemiennie
 RU Затягивайте попеременно

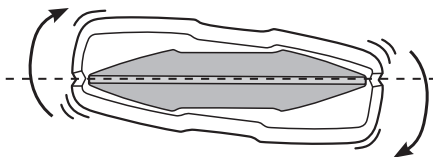
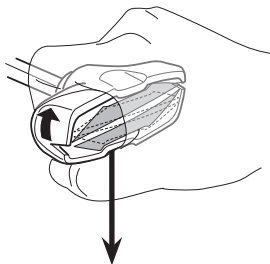
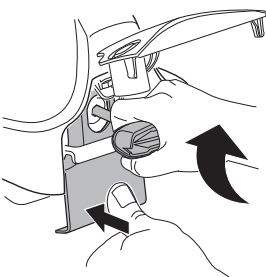
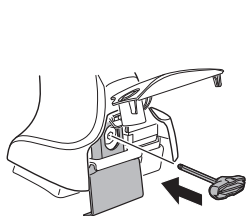
CZ Pokręťta bagażnika dokręcaj dokręcaj naprzemiennie.
 SK Dofahajte striedavo
 SLO Privijajte izmenično.
 HR Naizmjerno zategnite
 HU Egymástól függetlenül szorítandó
 GR Σφιγγείτε εναλλάξ
 TR Dönüşümlü sıkın

中文 交替拧紧

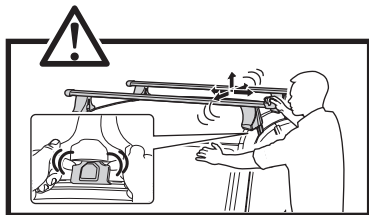
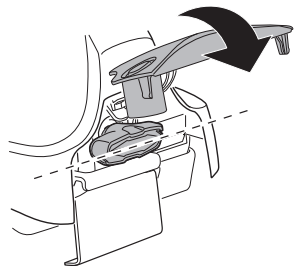
한국어 번갈아 가며 조이십시오.

日本語 交互に締め付けてください。

ไทย ชันในแบบสลับ



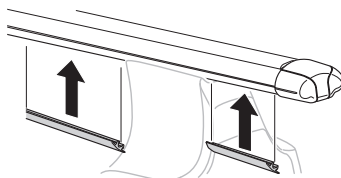
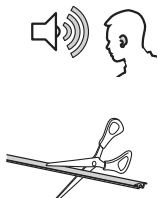
≈ 3 Nm

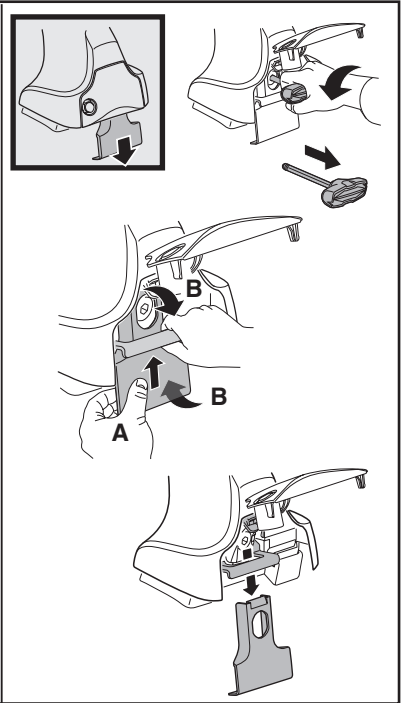
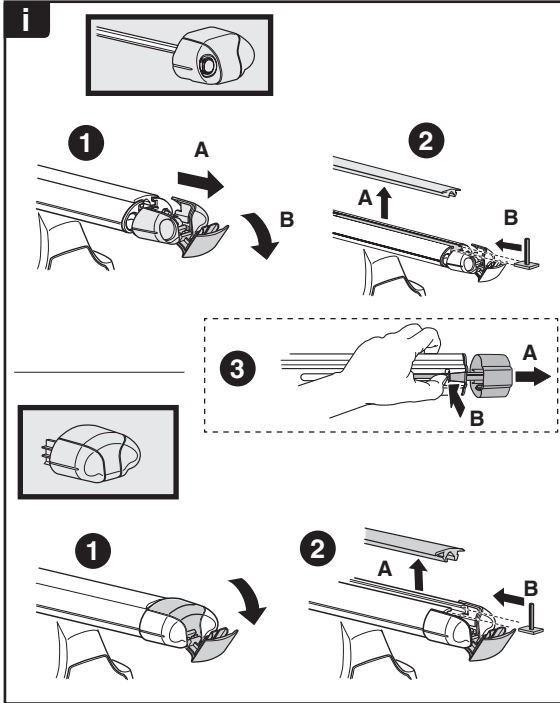
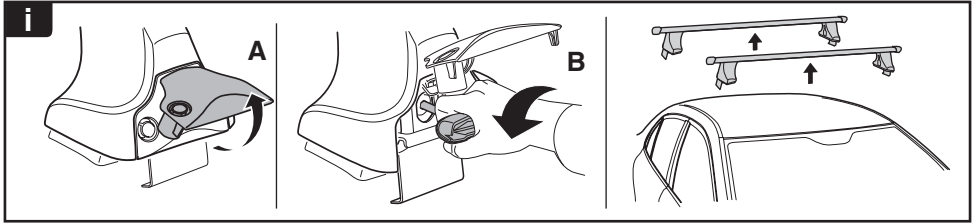


8



x1
17 mm





THULE
SWEDEN
**ONE
KEY
SYSTEM**



		(x4)
		(x6)
		(x8)
NA		(x10)
EUR		(x12)
ASIA		



WW ▶ Thule Sweden AB, Box 69, 330 33 Hillerstorp, SWEDEN
NA ▶ Thule Inc., 42 Silvermine Road, Seymour, Connecticut 06483, USA

info@thule.com
customer.service@thule.com

www.thule.com