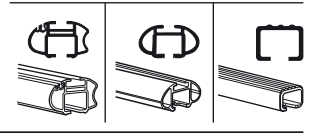
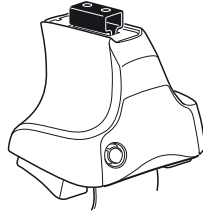


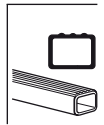
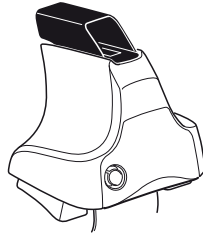
Kit 1413

FIAT Grande Punto, 3-dr Hatchback, 05–
FIAT Grande Punto, 5-dr Hatchback, 05–

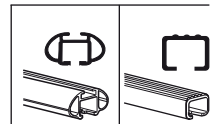
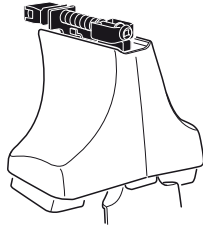
480R
754



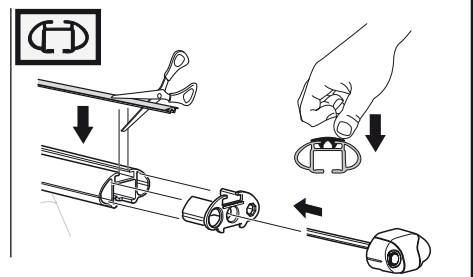
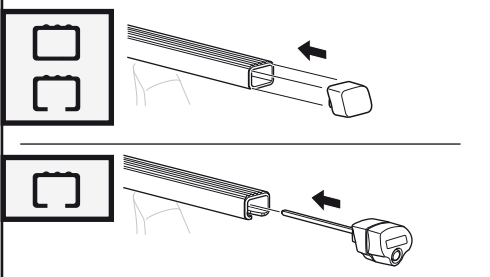
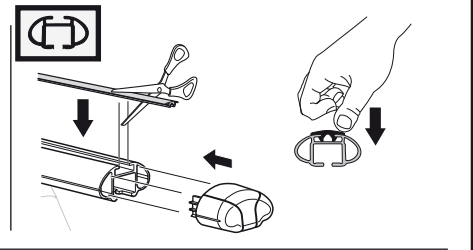
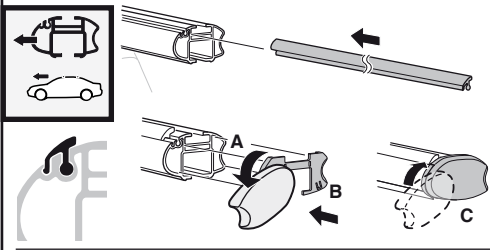
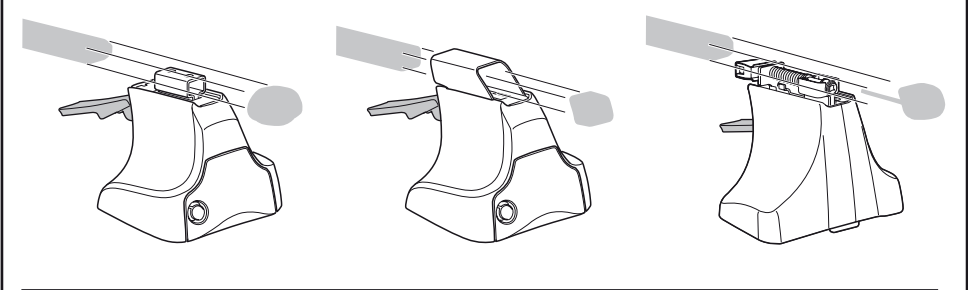
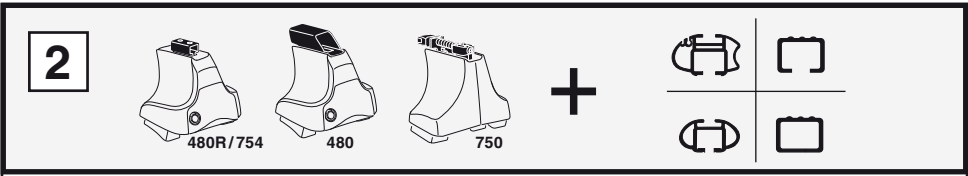
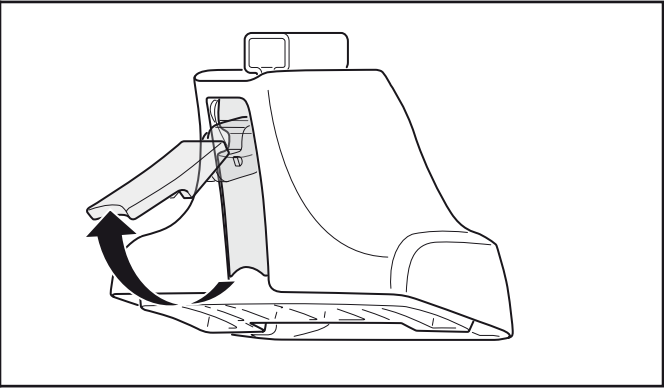
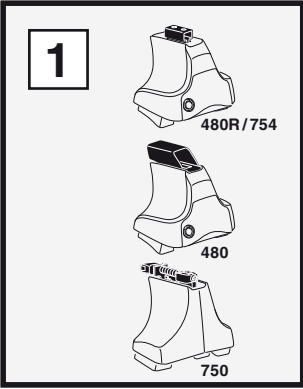
480

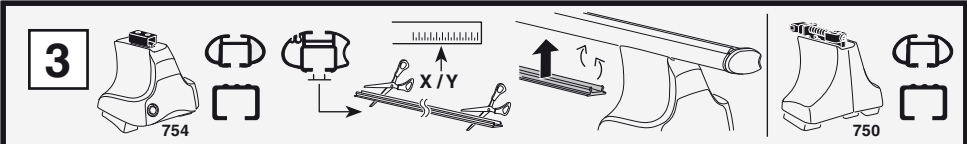


750



Kit





1

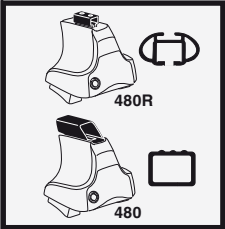
2

	X
FIAT Grande Punto, 3-dr Hatchback, 05-	26,5
FIAT Grande Punto, 5-dr Hatchback, 05-	26,5

1

2

	Y
FIAT Grande Punto, 3-dr Hatchback, 05-	26
FIAT Grande Punto, 5-dr Hatchback, 05-	19,5



1

2

	X inch	X mm
FIAT Grande Punto, 3-dr Hatchback, 05-	36 1/8"	916 mm
FIAT Grande Punto, 5-dr Hatchback, 05-	36 1/8"	916 mm

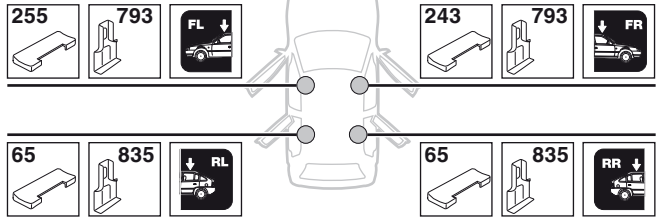
1

2

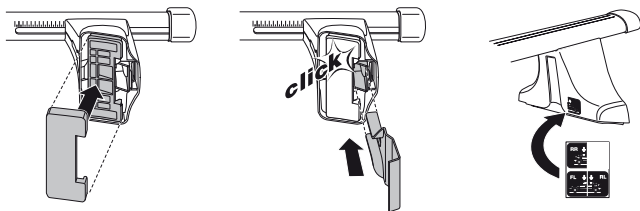
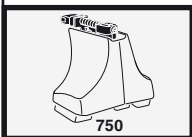
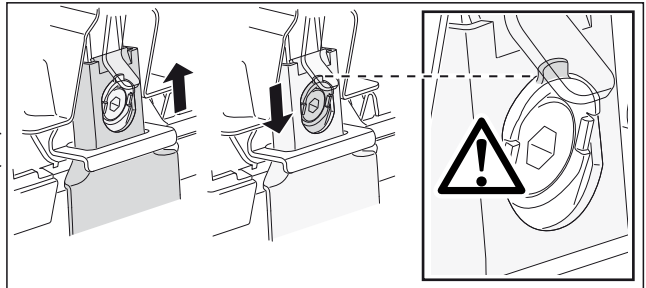
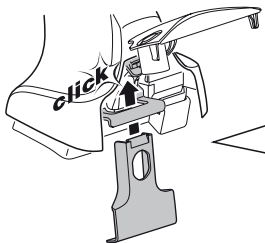
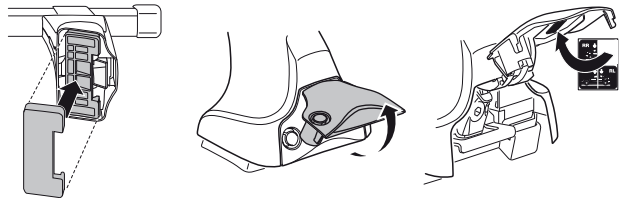
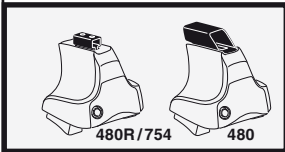
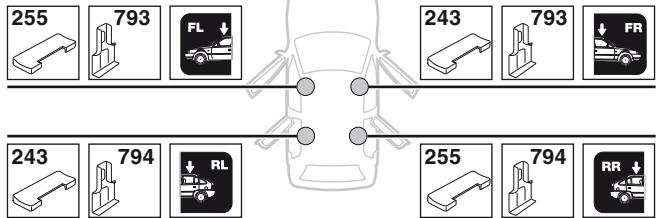
	Y inch	Y mm
FIAT Grande Punto, 3-dr Hatchback, 05-	35 7/8"	911 mm
FIAT Grande Punto, 5-dr Hatchback, 05-	33 1/4"	846 mm

4

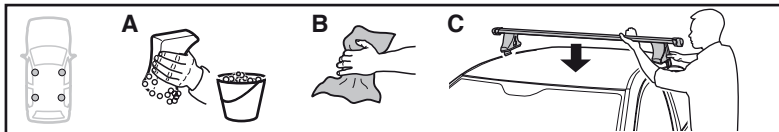
FIAT Grande Punto, 3-dr Hatchback, 05-



FIAT Grande Punto, 5-dr Hatchback, 05-

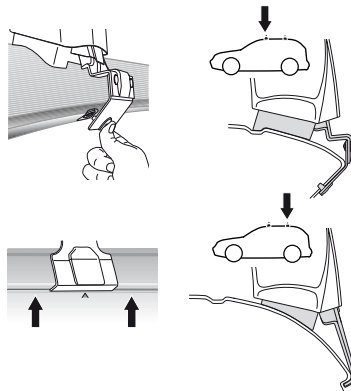
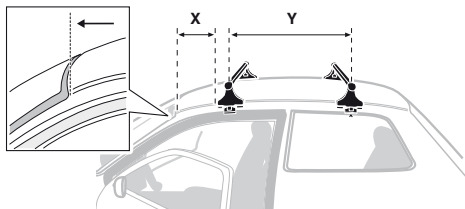


5

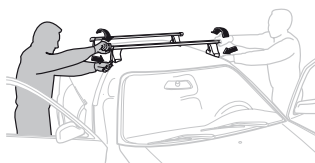
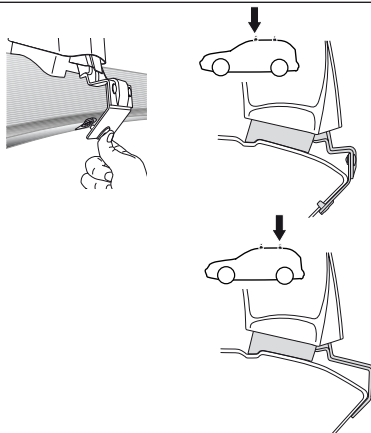
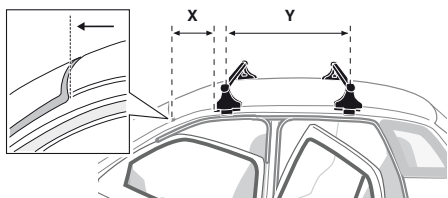


	X mm	Y mm	X inch	Y inch
FIAT Grande Punto, 3-dr Hatchback, 05-	250 mm	785 mm	9 7/8"	30 7/8"
FIAT Grande Punto, 5-dr Hatchback, 05-	250 mm	730 mm	9 7/8"	28 3/4"

FIAT Grande Punto, 3-dr Hatchback, 05-



FIAT Grande Punto, 5-dr Hatchback, 05-



- | | | | |
|--------------|---|------------|---|
| GB/US | Tighten alternately | CZ | Pokřeřta baĝaĝnika dokřeřcaj dokřeřcaj napřezmiennie. |
| D | Die Schrauben abwechselnd anziehen | SK | Dotahujte striedavo |
| F | Serrer alternativement chaque cōtē | SLO | Privijajte izmenično. |
| NL | Afwisselend aan de linker- en de rechterkant aandraaien | HR | Naizmjenično zategnite |
| I | Alternare il serraggio delle viti | HU | Egymástól függetlenül szorítandó |
| E | Apretar alternativamente | GR | Σφιγγετε εναλλάξ |
| PT | Aperte alternadamente | TR | Dönüşümlü sıkın |
| S | Dra åt växelvis | 中文 | 交替拧紧 |
| FIN | Kierrä vuorotellen | 한국어 | 변갈아 가며 조이십시오. |
| EST | Pinguldage vaheldumisi | 日本語 | 交互に締め付けてください。 |
| LAT | Pielvelciēt pamīšus | ไทย | ขันน้ในแบบสลับ |
| LIT | Užsukinėkite pakaitomis | | |
| PL | Śruby dokřeřcaj napřezmiennie | | |
| RU | Затягивайте попеременно | | |

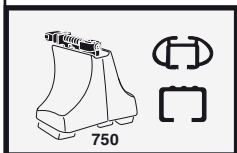
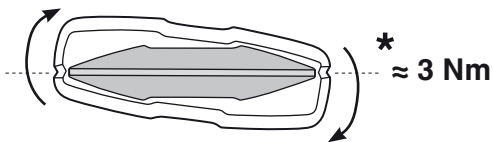
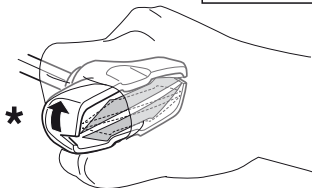
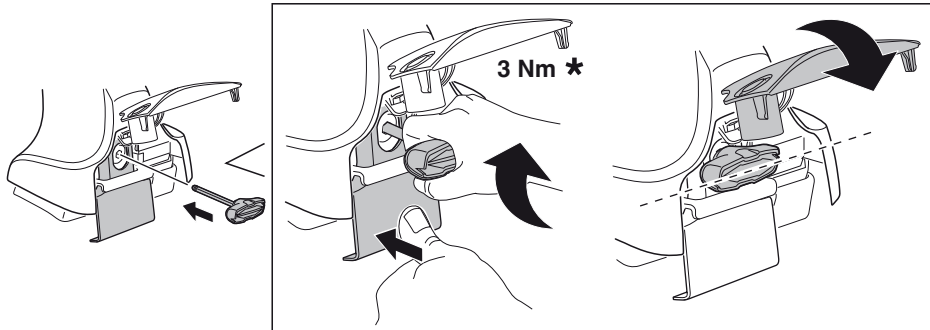
6



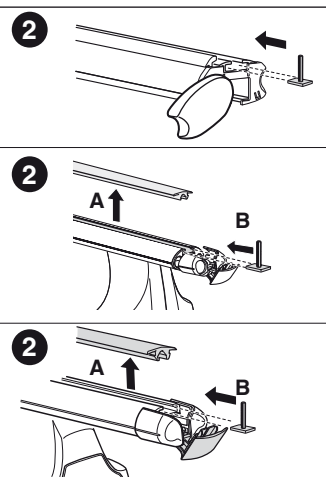
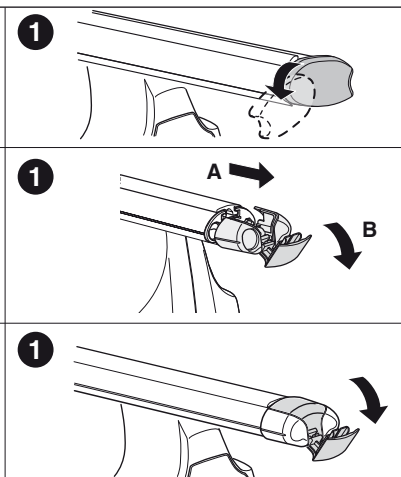
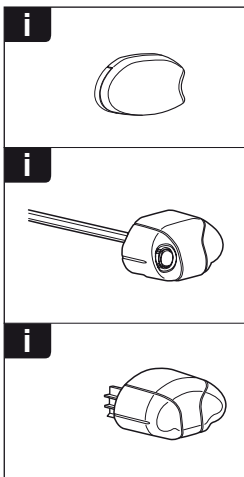
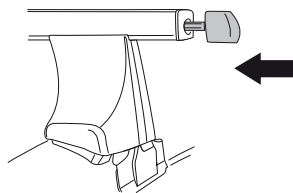
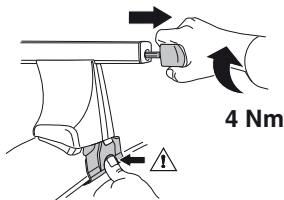
480R/754

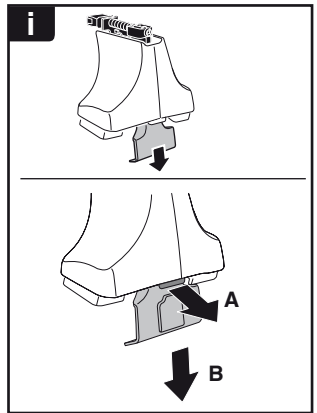
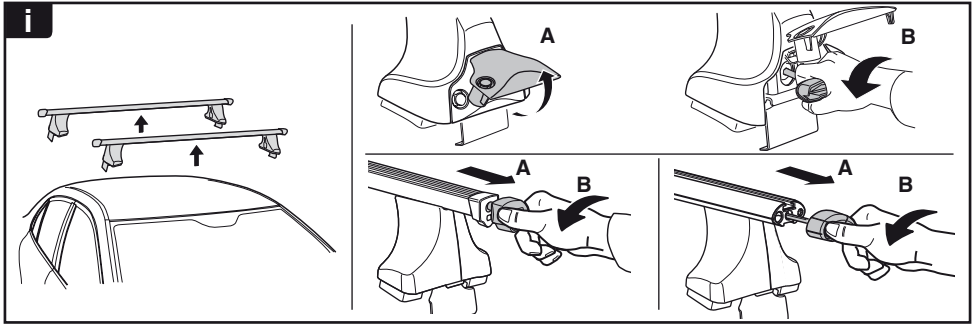


480



750





THULE
SWEDEN
**ONE
KEY
SYSTEM**



- 544 (x4)
- 596 (x6)
- 588 (x8)
- NA 510 (x10)
- EUR 452 (x12)
- ASIA



WW ▶ Thule Sweden AB, Box 69, 330 33 Hillerstorp, SWEDEN
NA ▶ Thule Inc., 42 Silvermine Road, Seymour, Connecticut 06483, USA

info@thule.com
customer.service@thule.com

www.thule.com